

THE INFORMATION, TECHNICAL DATA AND DESIGNS DISCLOSED IN THIS DOCUMENT (THE "INFORMATION") ARE EITHER THE EXCLUSIVE PROPERTY OF DE HAVILLAND INC., OR ARE SUBJECT TO PROPRIETARY RIGHTS OF OTHERS. THE INFORMATION IS NOT TO BE USED FOR DESIGN OR MANUFACTURE, OR DISCLOSED TO OTHERS WITHOUT THE EXPRESS PRIOR WRITTEN CONSENT OF DE HAVILLAND INC.

**de HAVILLAND**  
**CAGE CODE 71867**  
**CSP STANDARD**

THE HOLDER OF THIS DOCUMENT, BY ITS RETENTION AGREES TO HOLD THE INFORMATION IN CONFIDENCE. THESE RESTRICTIONS DO NOT APPLY TO PERSONS HAVING PROPRIETARY RIGHTS IN THE INFORMATION, TO THE EXTENT OF THOSE RIGHTS

**LIST OF CURRENT SHEETS**

SHEET	1	2	3											
REV	-	G	G											
* SHEET CANCELLED														

- ADDED SHEET 1 ISSUE RECORD

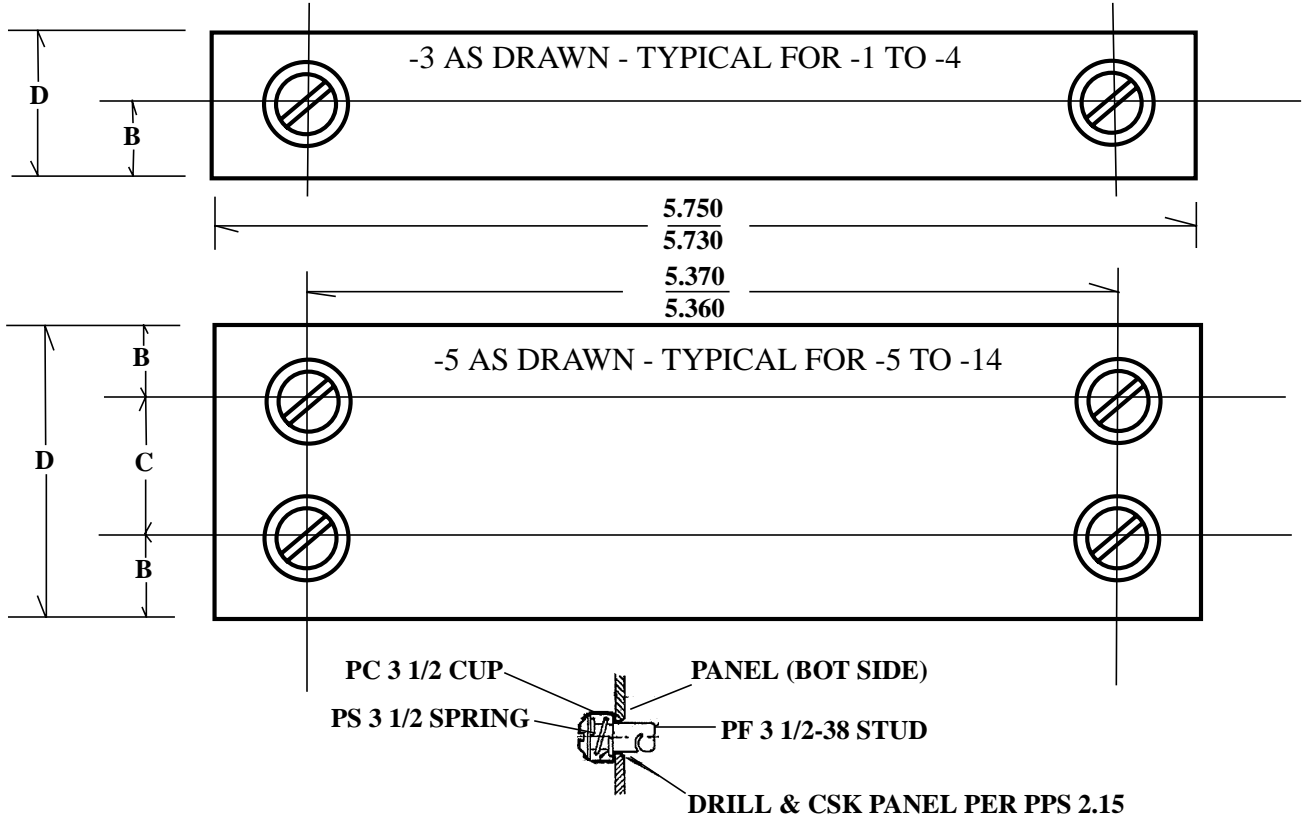
SEE ENGINEERING STANDARDS APPROVAL RECORD FOR ORIGINAL SIGNATURES AND CHANGE SUMMARY

DRAWN	B. EDWARDS
CHECKED	P. LAM
STRESSED	-
APPROVED	B. EDWARDS

**CONSOLE PANEL**  
**ASSEMBLY OF ELECTRICAL**

**CSP 122**  
**SHEET: 1 OF 3**

APPROVED: MAY 28, 2002



**MATERIAL:** .064 ALUMINUM ALLOY 2014-T6 PER QQ-A-255 TEMPER T6  
ALTERNATIVE .063 CLAD 2024-T3 PER QQ-A-250/5

**FINISH:** C1 ALL OVER - THEN REFINISH TOP SIDE & EDGES ONLY  
WITH F1 + BLACK NO. 37038 PER FED STD 595  
OR F1 + GRAY NO.36231 PER FED STD 595 (LIGHT)  
OR F1 + GRAY NO. 36118 PER FED STD 595 (DARK)

**NOTE:** ▼ADD SUFFIX "G" IMMEDIATELY AFTER THE CSP BASIC NUMBER TO INDICATE GREY FINISH  
(I.E.: CSP122G1 OR CSP122G1A)  
THE CSP BASIC NUMBER WITHOUT THE SUFFIX INDICATES BLACK FINISH  
ADD SUFFIX "H" TO BASIC PART NO. FOR DARK GREY FINISH

**EXAMPLE OF PART NO.**

CSP122-1 = BLACK FINISH (ASSEMBLY)  
CSP122G1 = GREY FINISH (ASSEMBLY)  
CSP122G1A = GREY FINISH (BARE PANEL)  
CSP122-1A = BLACK FINISH (BARE PANEL)  
CSP122H1 = DARK GREY FINISH (ASSEMBLY)  
CSP122H1A = DARK GREY FINISH (BARE PANEL)

SEE ENGINEERING STANDARDS APPROVAL RECORD FOR ORIGINAL SIGNATURES AND CHANGE SUMMARY

DRAWN	S F GUNG	<b>CONSOLE PANEL</b> ASSEMBLY OF ELECTRICAL	<b>CSP 122</b>
CHECKED	--		
STRESSED	---		SHEET: 2 OF 3
APPROVED	DSB		

TRANSFERED FROM SHEET 1

REV:

REV:

REV:

REV:

REV: F - APR 24, 2002

REV: G - MAY 28, 2002

APPROVED: FEB. 1965

THE INFORMATION, TECHNICAL DATA AND DESIGNS DISCLOSED IN THIS DOCUMENT (THE "INFORMATION") ARE EITHER THE EXCLUSIVE PROPERTY OF DE HAVILLAND INC., OR ARE SUBJECT TO PROPRIETARY RIGHTS OF OTHERS. THE INFORMATION IS NOT TO BE USED FOR DESIGN OR MANUFACTURE, OR DISCLOSED TO OTHERS WITHOUT THE EXPRESS PRIOR WRITTEN CONSENT OF DE HAVILLAND INC.

**de HAVILLAND**

**CAGE CODE 71867  
CSP STANDARD**

THE HOLDER OF THIS DOCUMENT, BY ITS RETENTION AGREES TO HOLD THE INFORMATION IN CONFIDENCE. THESE RESTRICTIONS DO NOT APPLY TO PERSONS HAVING PROPRIETARY RIGHTS IN THE INFORMATION, TO THE EXTENT OF THOSE RIGHTS

▼ WITHOUT DZUS FASTENERS

✓ SEE NOTE ON SHEET 1

▼ BARE PANEL NUMBER	✓ PART NUMBER OF ASSEMBLY	DZUS PARTS REQUIRED						EQUIVALENT TO GRUMMAN PART NO.
		B	C	D	PC-3 1/2 CUP	PS 3 1/2 SPRING	PF 3 1/2 STUD	
CSP122-1A	CSP122-1	.188		.375	2	2	2	G436-1
CSP122-2A	CSP122-2	.53		.720	2	2	2	G436-2
CSP122-3A	CSP122-3	.53		1.062	2	2	2	G436-3
CSP122-4A	CSP122-4	.53		1.437	2	2	2	G436-4
CSP122-5A	CSP122-5	.53	.750	1.812	4	4	4	G436-5
CSP122-6A	CSP122-6	.53	1.125	2.187	4	4	4	G436-6
CSP122-7A	CSP122-7	.53	1.500	2.562	4	4	4	G436-7
CSP122-8A	CSP122-8	.53	1.875	2.937	4	4	4	G436-8
CSP122-9A	CSP122-9	.53	2.250	3.312	4	4	4	G436-9
CSP122-10A	CSP122-10	.53	2.625	3.687	4	4	4	G436-10
CSP122-11A	CSP122-11	.53	3.00	4.062	4	4	4	G436-11
CSP122-12A	CSP122-12	.53	3.375	4.437	4	4	4	G436-12
CSP122-13A	CSP122-13	.53	3.750	4.812	4	4	4	G436-13
CSP122-14A	CSP122-14	.53	4.125	5.187	4	4	4	G436-14
CSP122-15A	CSP122-15	.53	4.500	5.562	4	4	4	
CSP122-16A	CSP122-16	.53	4.875	5.937	4	4	4	
CSP122-17A	CSP122-17	.53	6.000	7.060	4	4	4	
CSP122-18A	CSP122-18	.53	5.250	6.310	4	4	4	

ⓐ

SEE ENGINEERING STANDARDS APPROVAL RECORD FOR ORIGINAL SIGNATURES AND CHANGE SUMMARY

DRAWN	S F GUNG	<b>CONSOLE PANEL</b> ASSEMBLY OF ELECTRICAL	<b>CSP 122</b>
CHECKED			
STRESSED	---		SHEET: <b>3 OF 3</b>
APPROVED	DSB		

ⓐ DIMIs 6.310 was 6.370

REV:

REV:

REV:

REV: G - DEC 19, 2003

REV: F - MAY 28, 2002

REV: E - APR 24, 2002

APPROVED: FEB 1965