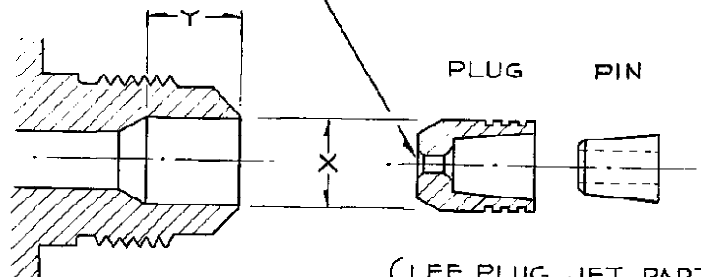


DE HAVILLAND AIRCRAFT of CANADA

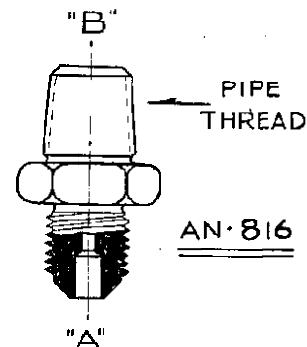
PAGE

STANDARDS SHEET

EXAMPLE — 187002-026 (THE DASH NO INDICATES THE SIZE OF RESTRICTION IN THOUSANDTH.)



(LEE PLUG JET PARTS)



CONSTRUCTION DETAIL OF
NIPPLE END TO ADAPT
LEE PLUG JET RESTRICTOR

NOTES —

1. INSTALL LEE PLUG JETS IN ACCORDANCE WITH PPS-227
2. MASK THREADS & PAINT NIPPLE YELLOW F24 POLYURETHANE ENAMEL
3. PART NUMBER TO BE STAMPED ON.
4. MANUFACTURER TO PROOF PRESS. TEST RESTRICTORS TO 3000PSID TO P.P.S.227

DASH NO	TYPE OF NIPPLE	OLD LEE PLUG JET NUMBER	RESTRICTED END	DIMENSIONS		INTERCHANGEABLE	NEW LEE PLUG JET NUMBER
				X	Y		
-1	AN-816-4-4	187002-038	A				JEPA 1873038
-3	AN-816-4 D	187002-038	A	.1880	.156		JEPA 1873038
-5	AN-816-4	187002-026	A	.1875	.150	C4-P-1388-1	JEPA 1873026

NOTE FOR HYDRAULIC SYSTEMS ONLY —
CSP-254 WITH LESS THAN .070
RESTRICTION IS NOT TO BE USED
ON HYDRAULIC LINES.

DRAWN	SFGUNG SEP 65
CHECKED	S. SCHRATNER
STRESSED	H. G. E.
APPROVED	S. S.

CLASSIFICATION
NIPPLE - RESTRICTED
FLARED TUBE - PIPE THREAD

STANDARD

CSP 254

FMC 7-1867

F24 ENAMEL ADDED TO
NOTE 2. NOTE 4 ADDED
17 NOV. 83 M.ROSSO

NEW LEE PT. NOS ADDED TO -1, -3, -5 M.ROSSO 8 JAN 85

REC INC DAR
A 20 SEP 65