

DASH NUMBER/PAGE CROSS REFERENCE INDEX

DASH NO.	PAGE	DASH NO.	PAGE	DASH NO.	PAGE	DASH NO.	PAGE
1	4						
2	3						
3	4						
4	3						
5	2						
6	3						
7	CANC						
8	CANC						
9	CANC						
10	CANC						
11	CANC						
12	3						
13	3						
14	3						

G
G

LIST OF CURRENT SHEETS

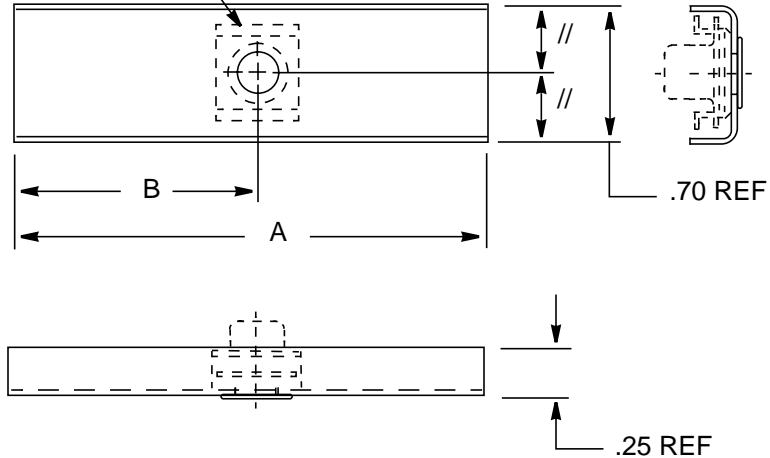
SHEET	1	2	3	4						
REV	G	D	B	A						

SEE ENGINEERING STANDARDS APPROVAL RECORD FOR ORIGINAL SIGNATURES AND CHANGE SUMMARY

DRAWN	M. ROSSO	CHANNEL, SUPPORT, FAIRLEAD, NUTPLATE	CSP 375
CHECKED	T. FLANNERY		
STRESSED	M. ELLIOTT		SHEET: 1
APPROVED	S. SCHRATTNER		

APPROVED: 14 JUL 1982 | REV: E 8 MAY 97 | REV: F 8 AUG 97 | REV: G 10 OCT 97

ANCHOR NUT
REF TABLE



NOTES:

1. REMOVE ALL SHARP CORNERS AND EDGES.
2. TOLERANCES UNLESS OTHERWISE NOTED: $.XXX \pm .010$
 $.XX \pm .03$
3. MATERIAL: MAKE FROM CS329
4. FINISH: AS SHOWN IN TABLE
C1 - CHEMICAL CONVERSION COATING - PPS 32.01
F19 - CHROMATED EPOXY PRIMER - PPS 34.08

ASSY DASH NO.	DIM 'A'	DIM 'B'	FINISH	ANCHOR NUT		USE WITH FAIRLEAD NO. (Ref)
				PREFERRED	ALTERNATE	
-5	1.380	.690	C1 + F19	FF6010L10A (1)	MS21059L3 (2)	CSP376-12

1. Deutsch Rivetless Nutplate - Install to PPS 2.30 - Plain Hole Installation.
2. Standard Anchor Nut - Install to PPS 2.17 - Class 1 Hole Size.

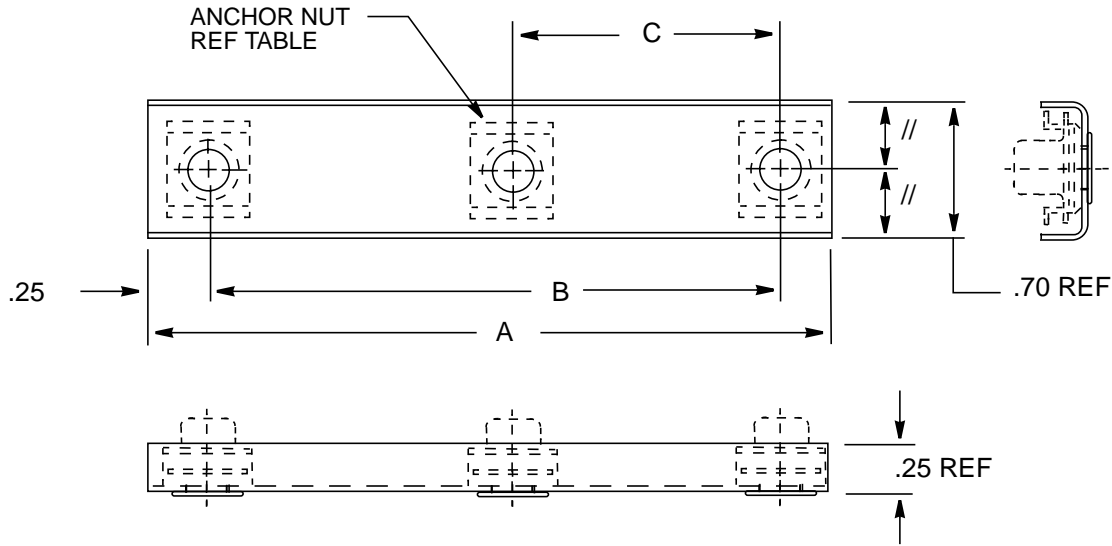
SEE ENGINEERING STANDARDS APPROVAL RECORD FOR ORIGINAL SIGNATURES AND CHANGE SUMMARY

DRAWN	B. McDONALD
CHECKED	J. ROTSCH
STRESSED	S. CHENG
APPROVED	S. HAMID

**CHANNEL, SUPPORT,
FAIRLEAD, NUTPLATE**

CSP 375

SHEET: 2



NOTES:

1. REMOVE ALL SHARP CORNERS AND EDGES.
2. TOLERANCES UNLESS OTHERWISE NOTED: $.XXX \pm .010$
 $.XX \pm .03$
3. MATERIAL: MAKE FROM CS329
4. FINISH: AS SHOWN IN TABLE
C1 - CHEMICAL CONVERSION COATING - PPS 32.01
F19 - CHROMATED EPOXY PRIMER - PPS 34.08

DASH NO.	DIM 'A'	DIM 'B'	DIM 'C'	FINISH	ANCHOR NUT		USE WITH FAIRLEAD NUMBER (REF)
					PREFERRED	ALTERNATE	
-1	4.500	4.000	2.100	C1+F19	FF6010L10A (1)	MS21061L3 (2)	CSP108-274
-3	5.500	5.000	2.500	C1+F19	FF6010L10A (1)	MS21061L3 (2)	CSP108-291

1. Deutsch Rivetless Nutplate - Install to PPS 2.30 - Plain Hole Installation.
2. Standard Anchor Nut - Install to PPS 2.17 - Class 1 Hole Size.
3. Centre A/Nut to be Two-Lug Type..

SEE ENGINEERING STANDARDS APPROVAL RECORD FOR ORIGINAL SIGNATURES AND CHANGE SUMMARY

DRAWN	B. McDONALD	CHANNEL, SUPPORT, FAIRLEAD, NUTPLATE	CSP 375
CHECKED	J. ROTSCH		
STRESSED	S. CHENG		SHEET: 4
APPROVED	S. HAMID		