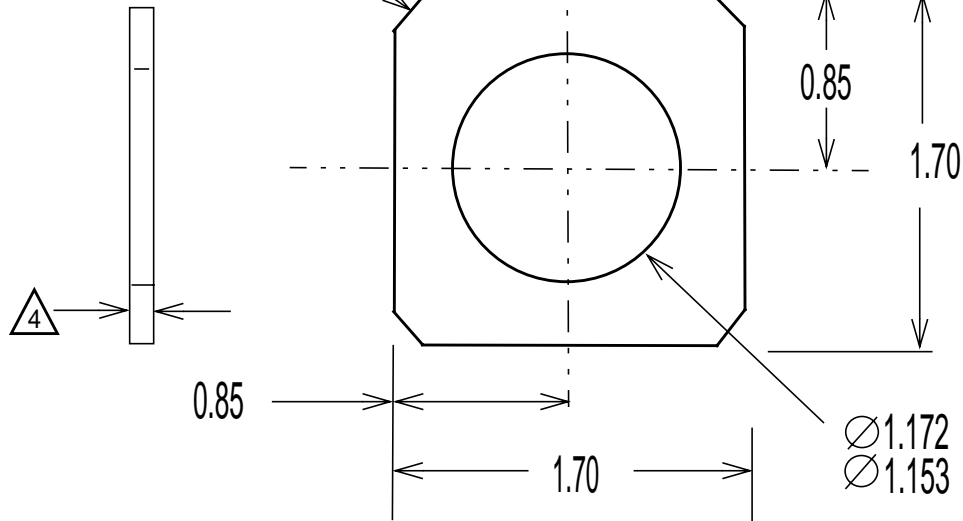


CHAM .100 X 45.0⁰
4 PLACES



MATERIAL: CLAD ALUMINUM ALLOY 7075-T6 PER QQ-A-250/13

FINISH: C1 (A)

- NOTES:**
1. SEE DASH NUMBER FOR MATERIAL THICKNESS
 2. PART MARK PER PPS 15.01
 3. DIMENSIONS SHOWN IN INCHES
- (A) (4) THICKNESS: .036, .040, .044, .048, .052, .056, .060, .064, .068, .070, .076, .080, .084, .088

EXAMPLE OF PART NUMBER

CSP516-040

THICKNESS IN 1/100 INCH (3 DIGITS MIN)

BASIC NUMBER

SEE ENGINEERING STANDARDS APPROVAL RECORD FOR ORIGINAL SIGNATURES AND CHANGE SUMMARY

DRAWN	B. EDWARDS
CHECKED	J. MACCOLL
STRESSED	E. GIOVANNETTI
APPROVED	B. EDWARDS

SHIM, ALUMINUM,

CSP 516

SHEET: 1 of 1

REMOVED F19, ADDED SHIM .036, .044, .048, .052

(A)

REV:

REV:

REV:

REV:

REV:

REV: A - Nov 27, 2006

APPROVED: 10 11 2006