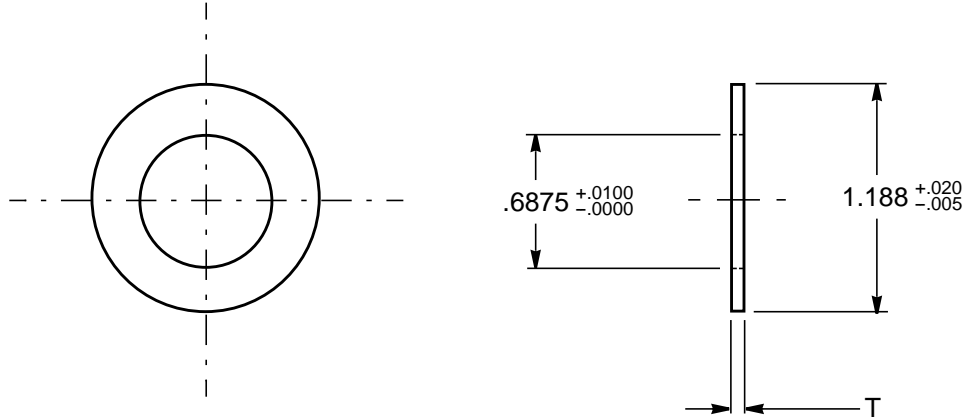


THE INFORMATION, TECHNICAL DATA AND DESIGNS DISCLOSED IN THIS DOCUMENT (THE "INFORMATION") ARE EITHER THE EXCLUSIVE PROPERTY OF DE HAVILLAND INC., OR ARE SUBJECT TO PROPRIETARY RIGHTS OF OTHERS. THE INFORMATION IS NOT TO BE USED FOR DESIGN OR MANUFACTURE, OR DISCLOSED TO OTHERS WITHOUT THE EXPRESS PRIOR WRITTEN CONSENT OF DE HAVILLAND INC.

de HAVILLAND

**CAGE CODE 71867
CSP STANDARD**

THE HOLDER OF THIS DOCUMENT, BY ITS RETENTION AGREES TO HOLD THE INFORMATION IN CONFIDENCE. THESE RESTRICTIONS DO NOT APPLY TO PERSONS HAVING PROPRIETARY RIGHTS IN THE INFORMATION, TO THE EXTENT OF THOSE RIGHTS



(A) CSP 532 , SHIMS - WASHERS , BILL OF MATERIAL

DASH NO.	T (THICKNESS)	TOLERANCE	MATERIAL	MATERIAL SECIFICATION	FINISH	REF OLD WASHER P/N
-1	.016	± .002	CORROSION RESISTANT STEEL (CRES)	301 PER AMS5517 (UNS S30100) 1/4 HARD (125 KSI MIN UTS)	PASSIVATE PER AMS2700 METHOD 1 TYPE 6 OR TYPE 7 CLASS 1	NAS1149C1016R
-2	.032	± .004				NAS1149C1032R
-3	.063	± .006		301 PER AMS5901 (UNS S30100) 302 PER AMS5516 (UNS S30200) 304 PER AMS5513 (UNS S30400) 316 PER AMS5524 (UNS S31600) 321 PER AMS5510 (UNS S32100) OR 347 PER AMS5512 (UNS S34700) (75 KSI MIN UTS)		NAS1149C1063R

LIST OF CURRENT SHEETS

SHEET	1	2
REVISION	B	B

SEE ENGINEERING STANDARDS APPROVAL RECORD FOR ORIGINAL SIGNATURES AND CHANGE SUMMARY

DRAWN	E. DANESH	SHIMS - WASHERS	CSP 532
CHECKED	B. EDWARDS		
STRESSED	E. GIOVANNETTI		SHEET: 1 of 2
APPROVED	B. EDWARDS		

(B) UPDATED REVISION TALBE SHEETS "1" & "2" HAVE BEEN RAISED AT ISSUE "B"
SHEET2: EMOVED NOTE "7" AND STRIKETHROUGH ITEMS IN NOTE "8"

REV: REV: REV: REV: A - 02 OCT 2009 REV: B - 07 JAN 2010 REV: C - 28 SEP 2009

NOTES :

1. ALL DIMENSIONS ARE IN INCHES.
2. REMOVE ALL BURRS AND SHARP EDGES.
3. SURFACE TEXTURE REQUIREMENTS PER ASME B46.1, UNLESS OTHERWISE SPECIFIED SURFACES TO BE 125 MICROINCHES.
4. CONCENTRICITY: THE INSIDE AND OUTSIDE DIAMETER SHALL BE CONCENTRIC WITHIN THE TOLERANCE OF THE INSIDE DIAMETER.
5. GEOMETRIC TOLERANCING IN ACCORDANCE WITH ASME Y14.5M.
6. COLORING: FOR IDENTIFICATION, CP AND 6AL-4V TITANIUM MAY BE COLORED. LOCAL DISCOLORATION IS PERMITTED WHERE WASHER MAKES CONTACT WITH WIRE WHICH SUSPENDS WASHER IN SOLUTION.

- (B) 7. ~~MAGNETIC PERMEABILITY OF CORROSION RESISTANT STEEL SHALL BE LESS THAN 2.0 (AIR=1.0) FOR A FIELD STRENGTH H=200 OERSTEDS USING MAGNETIC PERMEABILITY INDICATOR PER ASTM A342.~~

8. SAMPLING: A RANDOM SAMPLE OF WASHERS SHALL BE SELECTED FROM EACH LOT IN ACCORDANCE WITH ANSI/ASQC Z1.4 AND INSPECTED AS FOLLOWS:

- (1) EXAMINATION: THE SAMPLE SELECTED SHALL BE VISUALLY EXAMINED FOR MATERIAL PROTECTIVE FINISH, DIMENSIONS AND WORKMANSHIP (SEE NOTE 2)
- (2) TESTS: TESTS AND AQL'S FOR PASSIVATION SHALL BE IN ACCORDANCE WITH THEIR APPLICABLE FINISH SPECIFICATION'S SAMPLING REQUIREMENTS.

9. PACKAGING AND PACKING: PACKAGING SHALL BE IN ACCORDANCE WITH ASTM D3951.

10. MARKING: IN ADDITION TO MARKING REQUIRED BY PURCHASE ORDER, ALL INTERIOR PACKAGES AND SHIPPING CONTAINERS SHALL BE MARKED IN ACCORDANCE WITH MIL-STD-129.

EXAMPLE OF PART NUMBER:

CSP 532 - 2

THICKNESS "T"

BASIC PART NUMBER

SEE ENGINEERING STANDARDS APPROVAL RECORD FOR ORIGINAL SIGNATURES AND CHANGE SUMMARY

DRAWN	E. DANESH	SHIMS - WASHERS	CSP 532
CHECKED	B. EDWARDS		
STRESSED	E. GIOVANNETTI		SHEET: 2 of 2
APPROVED	B. EDWARDS		

(B) REMOVED NOTE "7" AND STRIKETHROUGH ITEMS IN NOTE "8"

REV: REV: REV: REV: A - 02 OCT 2009 REV: B - 07 JAN 2010 REV: C - 28 SEP 2009