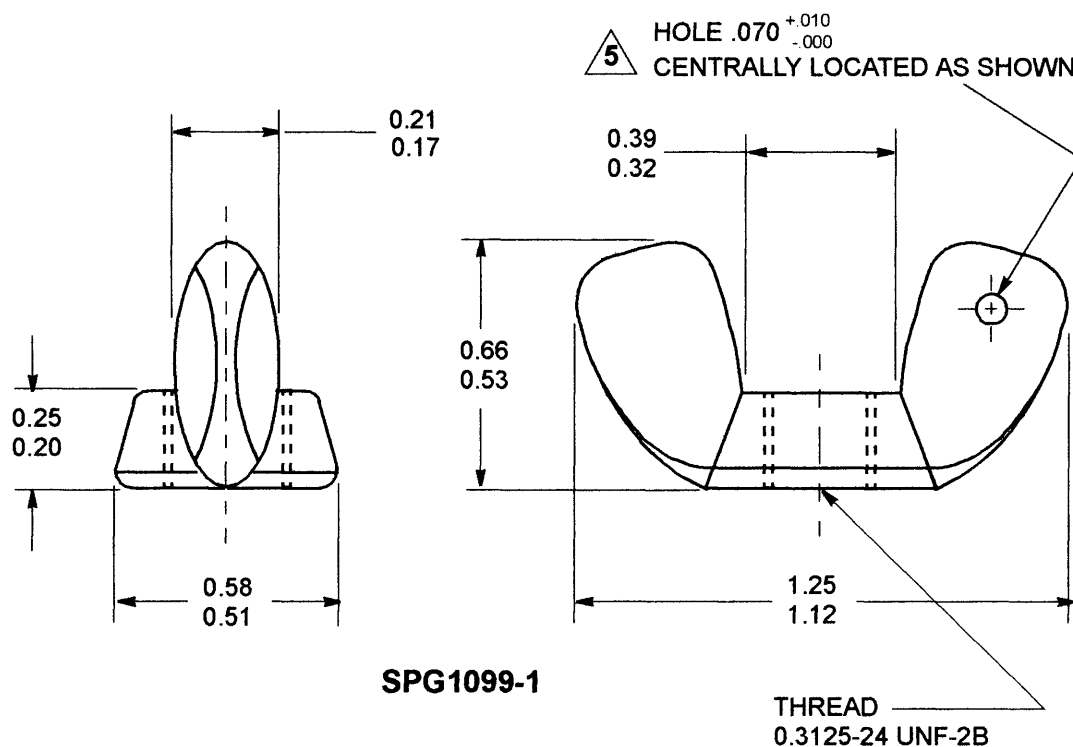


**INTERFAST**
INC.

CAGE CODE 39211

THE HOLDER OF THIS DOCUMENT, BY ITS RETENTION AGREES TO HOLD THE INFORMATION IN CONFIDENCE. THESE RESTRICTIONS DO NOT APPLY TO PERSONS HAVING PROPRIETARY RIGHTS IN THE INFORMATION, TO THE EXTENT OF THOSE RIGHTS



ENGINEERING NOTES:

- ① 1. NUT TO BE COMMERCIAL GRADE, COLD FORGED OR COLD FORMED AS PER
ANSI B18.17, TYPE A, LIGHT SERIES
2. MATERIAL: CRES 300 SERIES
3. TOLERANCE UNLESS OTHERWISE SPECIFIED: $XXX \pm .010$
 $XX \pm .030$
4. ALL DIMENSIONS IN INCHES
5. DEBURR HOLE BOTH SIDES

DRAWN	B. MCDONALD
CHECKED	B. MOSER
STRESSED	----
APPROVED	B. MCDONALD

NUT, PLAIN, WING

SPG 1099

SHEET: 1 of 1

① NOTE 1 WAS: NUT TO BE EQUIVALENT TO FF-N-845 TYPE 1, STYLE A-2
NOTE 5: ADDED

REV:

REV:

REV:

REV:

REV:

2010

2010

0:09:58

PROV

7