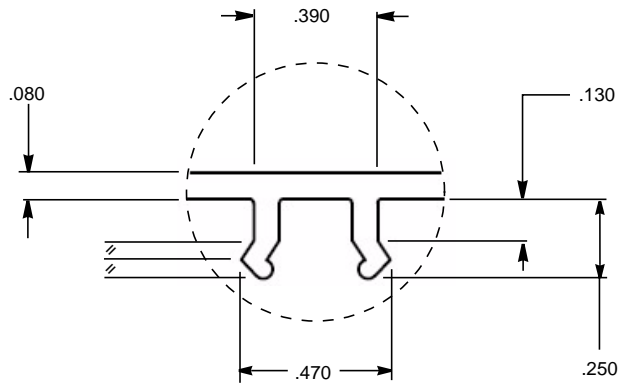
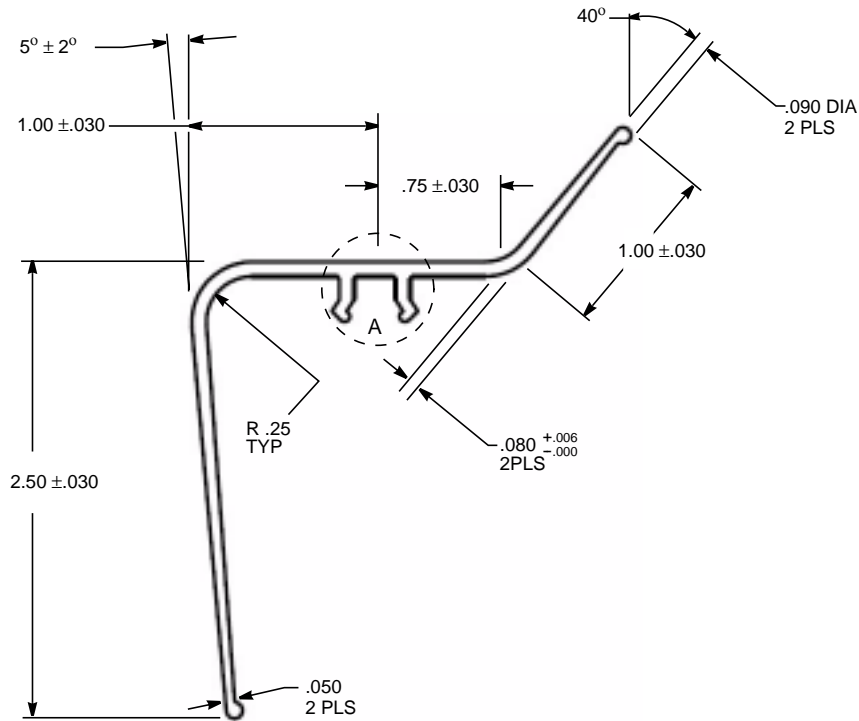


THE INFORMATION, TECHNICAL DATA AND DESIGNS DISCLOSED IN THIS DOCUMENT (THE "INFORMATION") ARE EITHER THE EXCLUSIVE PROPERTY OF DE HAVILLAND INC., OR ARE SUBJECT TO PROPRIETARY RIGHTS OF OTHERS. THE INFORMATION IS NOT TO BE USED FOR DESIGN OR MANUFACTURE, OR DISCLOSED TO OTHERS WITHOUT THE EXPRESS PRIOR WRITTEN CONSENT OF DE HAVILLAND INC.

de HAVILLAND

**CAGE CODE 71867
CVR STANDARD**

THE HOLDER OF THIS DOCUMENT, BY ITS RETENTION AGREES TO HOLD THE INFORMATION IN CONFIDENCE. THESE RESTRICTIONS DO NOT APPLY TO PERSONS HAVING PROPRIETARY RIGHTS IN THE INFORMATION, TO THE EXTENT OF THOSE RIGHTS



DETAIL A

SEE ENGINEERING STANDARDS APPROVAL RECORD FOR ORIGINAL SIGNATURES AND CHANGE SUMMARY

DRAWN	E. DANESH	COVER, SEAT TRACK	CVR 112
CHECKED	B. EDWARDS		
STRESSED	N/A		SHEET: 1 OF 2
APPROVED	B. EDWARDS		

© REDRAWN WITH EDITORIAL CHANGES
NOTE 10 ADDED TO REPRESENT TOLERANCE REQUIREMENTS TO CONFORM WITH PEXCO DWG # 4-496

APPROVED: 09 MAY 1985 REV: G - 05 SEP 2013 REV: B - 14 AUG 1985 REV: C - 19 AUG 1985 REV: D - 29 SEP 1986 REV: E - 21 JAN 1992 REV: F - 24 FEB 1995

THE INFORMATION, TECHNICAL DATA AND DESIGNS DISCLOSED IN THIS DOCUMENT (THE "INFORMATION") ARE EITHER THE EXCLUSIVE PROPERTY OF DE HAVILLAND INC., OR ARE SUBJECT TO PROPRIETARY RIGHTS OF OTHERS. THE INFORMATION IS NOT TO BE USED FOR DESIGN OR MANUFACTURE, OR DISCLOSED TO OTHERS WITHOUT THE EXPRESS PRIOR WRITTEN CONSENT OF DE HAVILLAND INC.

de HAVILLAND

**CAGE CODE 71867
CVR STANDARD**

THE HOLDER OF THIS DOCUMENT, BY ITS RETENTION AGREES TO HOLD THE INFORMATION IN CONFIDENCE. THESE RESTRICTIONS DO NOT APPLY TO PERSONS HAVING PROPRIETARY RIGHTS IN THE INFORMATION, TO THE EXTENT OF THOSE RIGHTS

NOTES:

1. MATERIAL: MODIFIED POLYURETHANE ABCO 2449
2. COLOUR: CVR112 (MATTE BLACK), FEDERAL STD 595 #37038 OR DAVIDSON COLOUR #706
CVR112-1 (NAVY BLUE), DAVIDSON COLOUR #556
3. FLAMMABILITY: MATERIAL SHALL MEET THE REQUIREMENTS OF FAR 25.853(b), Amend 25-66
4. DUROMETER: SHORE A95
5. EXTRUSION TO BE SUPPLIED IN MINIMUM 12 FOOT LENGTHS
6. BOTH ARMS TAPER FROM .080 TO .050
7. USAGE RESTRICTED TO PASSENGER COMPARTMENT ONLY
8. TO BE SUPPLIED ACCORDING TO PEXCO LLC (ALLWEST PLASTIC) SPECIFICATION NUMBER 4-496
9. ENGINEERING APPROVAL REQUIRED ON SPECIMEN PRIOR TO PRODUCTION RUN
10. THIS DRAWING IS NOT TO SCALE
11. ALL DIMENSIONS ARE IN INCHES
12. TOLERANCES UNLESS OTHERWISE SPECIFIED: .XXX ± .010

SEE ENGINEERING STANDARDS APPROVAL RECORD FOR ORIGINAL SIGNATURES AND CHANGE SUMMARY

DRAWN	E. DANESH	COVER, SEAT TRACK	CVR 112
CHECKED	B. EDWARDS		
STRESSED	N/A		SHEET: 2 OF 2
APPROVED	B. EDWARDS		

REV:

REV:

REV:

REV:

REV:

REV:

APPROVED: 05 SEP 2013