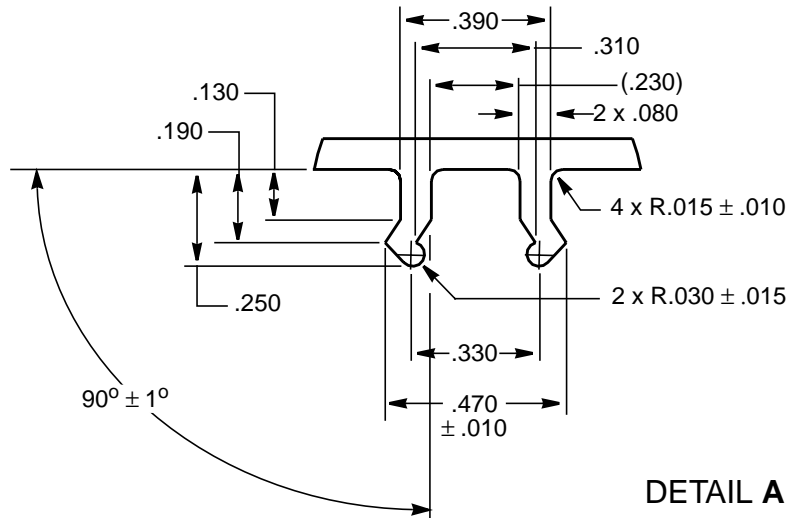
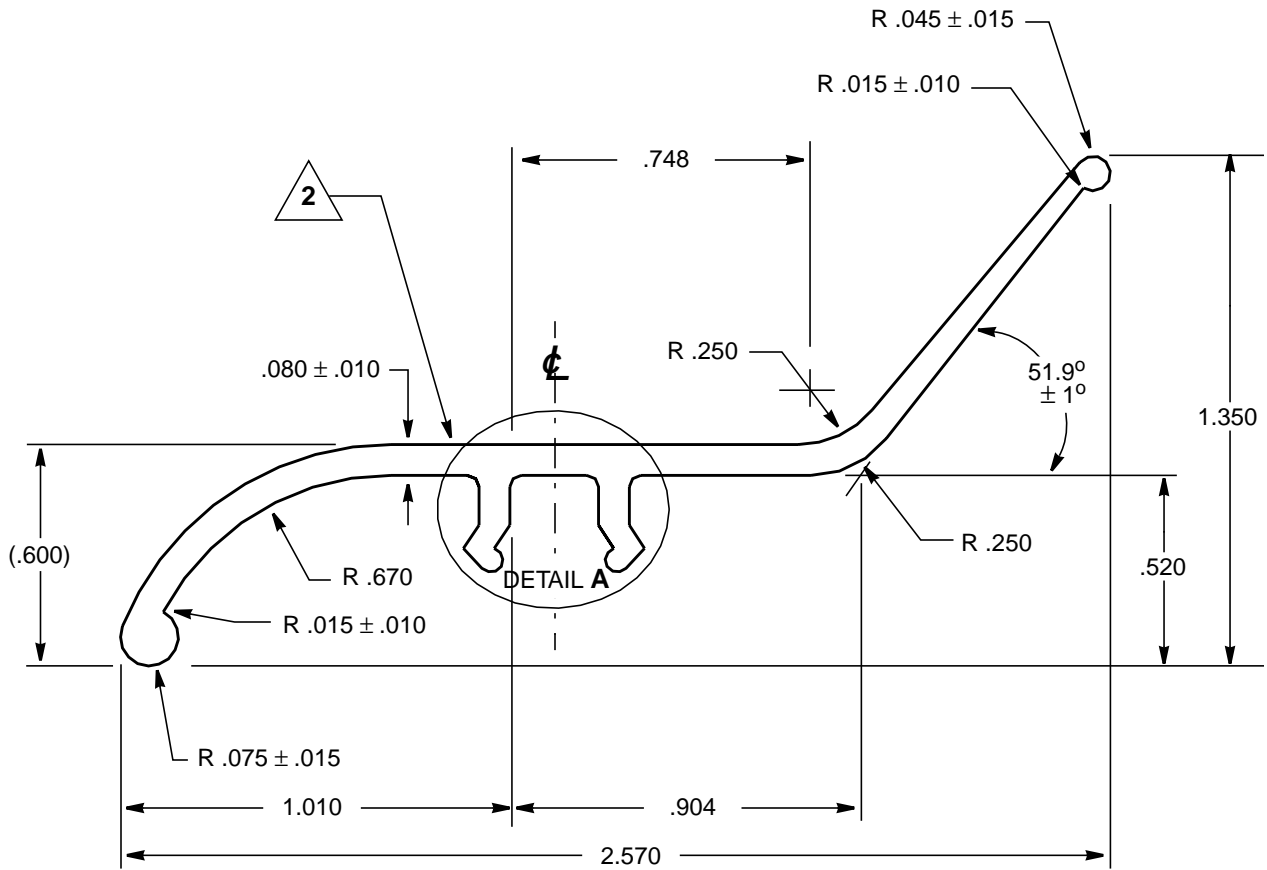


THE INFORMATION, TECHNICAL DATA AND DESIGNS DISCLOSED IN THIS DOCUMENT (THE "INFORMATION") ARE EITHER THE EXCLUSIVE PROPERTY OF DE HAVILLAND INC., OR ARE SUBJECT TO PROPRIETARY RIGHTS OF OTHERS. THE INFORMATION IS NOT TO BE USED FOR DESIGN OR MANUFACTURE, OR DISCLOSED TO OTHERS WITHOUT THE EXPRESS PRIOR WRITTEN CONSENT OF DE HAVILLAND INC.

**de HAVILLAND**

**CAGE CODE 71867  
CVR STANDARD**

THE HOLDER OF THIS DOCUMENT, BY ITS RETENTION AGREES TO HOLD THE INFORMATION IN CONFIDENCE. THESE RESTRICTIONS DO NOT APPLY TO PERSONS HAVING PROPRIETARY RIGHTS IN THE INFORMATION, TO THE EXTENT OF THOSE RIGHTS



SEE ENGINEERING STANDARDS APPROVAL RECORD FOR ORIGINAL SIGNATURES AND CHANGE SUMMARY

DRAWN	B. McDONALD
CHECKED	J. ROTSCH
STRESSED	S. CHENG
APPROVED	S. HAMID

**CAP, SEAT TRACK,  
SIDEWALL**

**CVR 191**

SHEET: 1 of 2

(F) ADDED: CVR191MH to sheet 2

REV: F - 14 NOV 2007  
REV: E 3 DEC 2004  
REV: D - 30 JUN 04  
REV: C - 07 AUG 02  
REV: B - 30 OCT 98  
REV: A - 5 JUN 98  
APPROVED: 3 APR 1998

**NOTES:**

1. DULL FINISH IS REQUIRED

2. APPEARANCE SURFACE TO BE FREE OF MAJOR BLEMISHES, STREAKS, LINES, ETC

3. MATERIAL: MODIFIED POLYURETHANE ABCO 2449 (ABCO) OR AW2000PU (ALL WEST PLASTICS)

4. FLAMMABILITY: MATERIAL SHALL MEET THE REQUIREMENTS OF FAR 25.853(a), AMDT 25-83, APPENDIX F, PART I, PARA (a)(1)(ii)

5. SHORE D HARDNESS: 60 - 70

6. EXTRUSION TO BE SUPPLIED IN 12 FOOT LENGTHS

7. TOLERANCE:  $\pm .030$  UNLESS NOTED

8. MATERIAL HAS COLOUR

9. DRAWING CALL OUT FOR THIS MATERIAL MUST INCLUDE APPROPRIATE TWO LETTER COLOUR/ MATERIAL CODE SUFFIX AS SHOWN IN TABLE:

CVR P/N	COLOUR	
	DESCRIPTION	SPECIFICATION
<b>CVR191MA</b>	GREY	PANTONE 431C
<b>CVR191MB</b>	PANTONE REFLEX BLUE	PANTONE 540C
<b>CVR191MC</b>	BURGUNDY	PANTONE 504C
<b>CVR191MD</b>	DARK GREY	PANTONE 412C
<b>CVR191ME</b>	BLACK	PANTONE PROCESS BLACK 2C
<b>CVR191MF</b>	NAVY BLUE	BAC 556
<b>CVR191MG</b>	BLUE/GREEN/BLACK LUSTERLESS	PANTONE 323U (ALL WEST PLASTIC COLOR# A305BL) (Ref: GA300GR)
<b>CVR191MH</b>	BLUE - BLACK DULL FINISH	BAC 7923 (A & B PLASTICS)

10. A SAMPLE OF THE FIRST APPROVED BATCH WILL BE USED FOR SUBSEQUENT PRODUCT COLOUR APPROVALS.

SEE ENGINEERING STANDARDS APPROVAL RECORD FOR ORIGINAL SIGNATURES AND CHANGE SUMMARY

DRAWN	B. McDONALD	<b>CAP, SEAT TRACK, SIDEWALL</b>	<b>CVR 191</b>
CHECKED	J. ROTSCH		
STRESSED	S. CHENG		SHEET: <b>2</b>
APPROVED	S. HAMID		

ADDED: CVR191MH

REV: F - 14 NOV 2007  
REV: E DEC 2004  
REV: D 30 JUN 04  
REV: C - 07 AUG 02  
REV: B - 30 OCT 98  
REV: A - 5 JUN 98  
APPROVED: 3 APR 1998