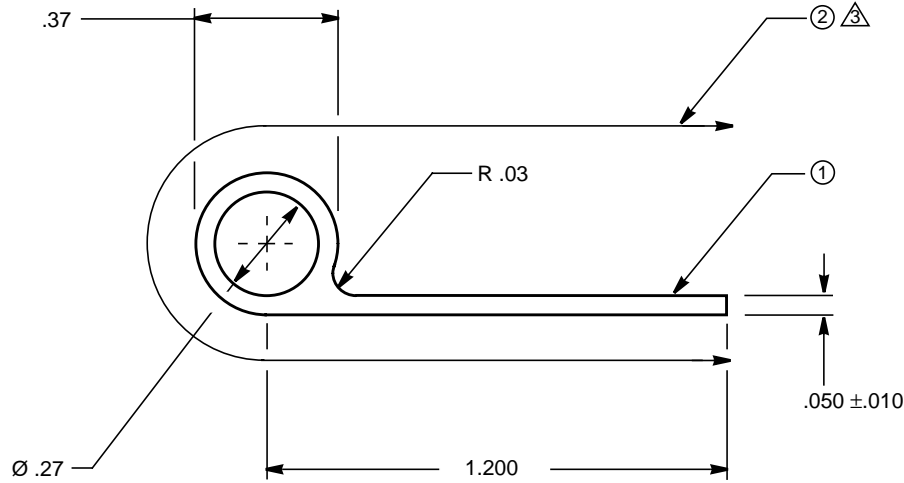




**FULL SCALE**



**SCALE 2:1**

**MATERIAL:**

- |                   |   |
|-------------------|---|
| 1. RUBBER:        | FLUOROSILICON PER CW9770  |
| 2. REINFORCEMENT: | CERAMIC FABRIC PER CW-CE-001<br>FIBERGLASS FABRIC PER CW-FB-001 |

**NOTES:**

1. SEAL MATERIAL, IN AN "AS-INSTALLED" CONFIGURATION, SHALL BE RESISTANT TO 2000° F ± 50° F FOR 15 MINS WITH NO BURN THROUGH TO THE REQUIREMENTS OF FAR 25 POWER PLANT PER FAA AC# 20-135 FIREPROOF MATERIALS
2. MAXIMUM CONTINUAL LENGTH 10 FEET.
3. FABRIC SHALL BE LAID UPON A BIAS AND FIRMLY BONDED TO THE SEAL WITH NO STRIKE THROUGH AS FOLLOWS:
  - 1 PLY OF CERAMIC FABRIC PER CW-CE-001 AROUND THE BULB (.014" NOM THK)
  - 1 PLY OF FIBERGLASS FABRIC PER CW-FB-001 AROUND THE BULB & 2 PLY IN THE TAIL (.007" NOM THK)
4. ALL DIMENSIONS ARE IN INCHES.
5. TOLERANCES PER AMS 2279 UNLESS OTHERWISE SPECIFIED.

SEE ENGINEERING STANDARDS APPROVAL RECORD FOR ORIGINAL SIGNATURES AND CHANGE SUMMARY

DRAWN	E. DANESH	<b>P - SEAL FIBERGLASS REINFORCEMENT</b>	<b>CVR 196</b>
CHECKED	B. EDWARDS		
STRESSED	N/A		SHEET: 1 OF 1
APPROVED	B. EDWARDS		

REV:

REV:

REV:

REV:

REV:

REV:

APPROVED: 17 APR 2012