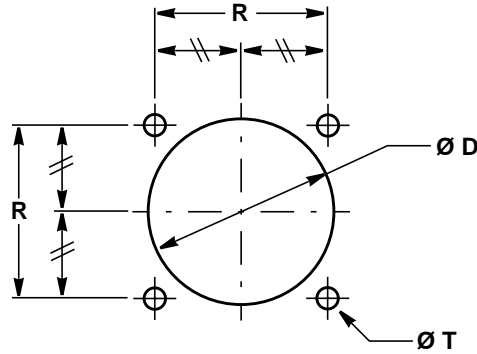


DS16 MOUNTING HOLES NOT ACCEPTABLE FOR USE IN PRIMARY AIRCRAFT STRUCTURE

REFERENCE:
SPECIFICATION - MS3100
- MS3102



DS No.	CONNECTOR SIZE	Ø D HOLE DIA ± .016	Ø T BOLT HOLE ± .005	R BOLT PITCH ± .010	NOTES
DS16-1	8.S	.562	.120	.594	①
DS16-2	8.S	.562	.150	.594	
DS16-3	10.S	.688	.120	.719	①
DS16-4	10.S	.688	.150	.719	
DS16-5	12 & 12.S	.812	.120	.812	①
DS16-6	12 & 12.S	.812	.150	.812	
DS16-7	14 & 14.S	.938	.120	.906	①
DS16-8	14 & 14.S	.938	.150	.906	
DS16-9	16 & 16.S	1.062	.120	.969	①
DS16-10	16 & 16.S	1.062	.150	.969	
DS16-11	18	1.188	.120	1.062	①
DS16-12	18	1.188	.177	1.062	
DS16-13	20	1.312	.120	1.156	①
DS16-14	20	1.375	.177	1.156	③
DS16-15	20	1.312	.177	1.156	②
DS16-16	22	1.438	.120	1.250	①
DS16-17	22	1.438	.177	1.250	

SEE ENGINEERING STANDARDS APPROVAL RECORD FOR ORIGINAL SIGNATURES AND CHANGE SUMMARY

DRAWN	B. McDONALD
CHECKED	B. EDWARDS
STRESSED	---
APPROVED	S. HAMID

**MOUNTING HOLES, MS3100 &
MS3102 ELECTRICAL
CONNECTORS**

DS 16

SHEET: 1 of 2

© REDRAWN - SHT 2 ADDED

REV:

REV:

REV:

REV: C - 11 NOV 99

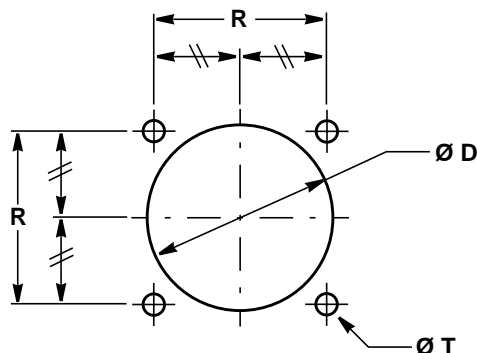
REV: 13 MAY 80

REV: A - APR 58

APPROVED: APR 1958

DS16 MOUNTING HOLES NOT ACCEPTABLE FOR USE IN PRIMARY AIRCRAFT STRUCTURE

REFERENCE:
SPECIFICATION - MS3100
- MS3102



DS No.	CONNECTOR SIZE	Ø D HOLE DIA ± .016	Ø T BOLT HOLE ± .005	R BOLT PITCH ± .010	NOTES
DS16-18	24	1.562	.147	1.375	①
DS16-19	24	1.688	.177	1.375	③
DS16-20	24	1.562	.177	1.375	②
DS16-21	28	1.812	.147	1.562	①
DS16-22	28	1.812	.177	1.562	
DS16-23	32	2.062	.173	1.750	①
DS16-24	32	2.062	.209	1.750	
DS16-25	36	2.312	.173	1.938	①
DS16-26	36	2.312	.209	1.938	
DS16-27	40	2.562	.173	2.188	①
DS16-28	40	2.562	.209	2.188	
DS16-29	44	2.812	.173	2.375	①
DS16-30	44	2.812	.209	2.375	
DS16-31	48	3.062	.173	2.625	①
DS16-32	48	3.062	.209	2.625	

① STANDARD SIZE

② MS3102 PARTS ONLY

③ MS3100 PARTS ONLY

SEE ENGINEERING STANDARDS APPROVAL RECORD FOR ORIGINAL SIGNATURES AND CHANGE SUMMARY

DRAWN	B. McDONALD	MOUNTING HOLES, MS3100 & MS3102 ELECTRICAL CONNECTORS	DS 16
CHECKED	B. EDWARDS		
STRESSED	---		SHEET: 2 of 2
APPROVED	S. HAMID		

REV:

REV:

REV:

REV:

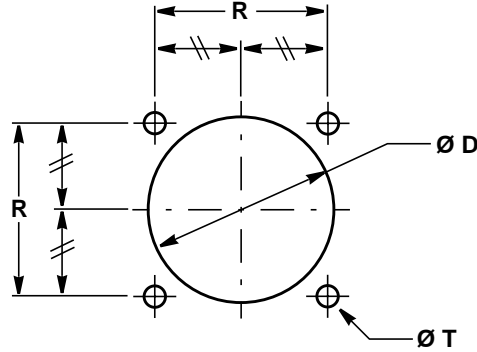
REV:

REV:

APPROVED: 11 NOV 99

DS16 MOUNTING HOLES NOT ACCEPTABLE FOR USE IN PRIMARY AIRCRAFT STRUCTURE

REFERENCE:
SPECIFICATION - MS3100
- MS3102



DS No.	CONNECTOR SIZE	Ø D HOLE DIA ± .016	Ø T BOLT HOLE ± .005	R BOLT PITCH ± .010	NOTES
DS16-1	8.S	.562	.120	.594	①
DS16-2	8.S	.562	.150	.594	
DS16-3	10.S	.688	.120	.719	①
DS16-4	10.S	.688	.150	.719	
DS16-5	12 & 12.S	.812	.120	.812	①
DS16-6	12 & 12.S	.812	.150	.812	
DS16-7	14 & 14.S	.938	.120	.906	①
DS16-8	14 & 14.S	.938	.150	.906	
DS16-9	16 & 16.S	1.062	.120	.969	①
DS16-10	16 & 16.S	1.062	.150	.969	
DS16-11	18	1.188	.120	1.062	①
DS16-12	18	1.188	.177	1.062	
DS16-13	20	1.312	.120	1.156	①
DS16-14	20	1.375	.177	1.156	③
DS16-15	20	1.312	.177	1.156	②
DS16-16	22	1.438	.120	1.250	①
DS16-17	22	1.438	.177	1.250	

SEE ENGINEERING STANDARDS APPROVAL RECORD FOR ORIGINAL SIGNATURES AND CHANGE SUMMARY

DRAWN	B. McDONALD
CHECKED	B. EDWARDS
STRESSED	---
APPROVED	S. HAMID

**MOUNTING HOLES, MS3100 &
MS3102 ELECTRICAL
CONNECTORS**

DS 16

SHEET: 1 of 2

© REDRAWN - SHT 2 ADDED

REV:

REV:

REV:

REV: C - 11 NOV 99

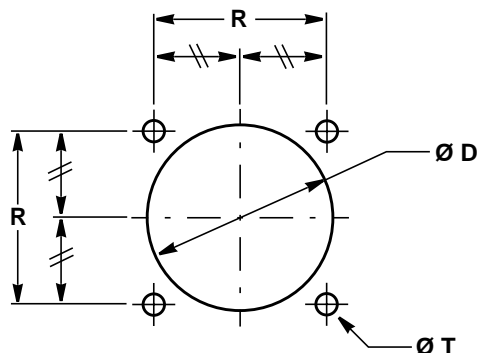
REV: 13 MAY 80

REV: A - APR 58

APPROVED: APR 1958

DS16 MOUNTING HOLES NOT ACCEPTABLE FOR USE IN PRIMARY AIRCRAFT STRUCTURE

REFERENCE:
SPECIFICATION - MS3100
- MS3102



DS No.	CONNECTOR SIZE	Ø D HOLE DIA ± .016	Ø T BOLT HOLE ± .005	R BOLT PITCH ± .010	NOTES
DS16-18	24	1.562	.147	1.375	①
DS16-19	24	1.688	.177	1.375	③
DS16-20	24	1.562	.177	1.375	②
DS16-21	28	1.812	.147	1.562	①
DS16-22	28	1.812	.177	1.562	
DS16-23	32	2.062	.173	1.750	①
DS16-24	32	2.062	.209	1.750	
DS16-25	36	2.312	.173	1.938	①
DS16-26	36	2.312	.209	1.938	
DS16-27	40	2.562	.173	2.188	①
DS16-28	40	2.562	.209	2.188	
DS16-29	44	2.812	.173	2.375	①
DS16-30	44	2.812	.209	2.375	
DS16-31	48	3.062	.173	2.625	①
DS16-32	48	3.062	.209	2.625	

① STANDARD SIZE

② MS3102 PARTS ONLY

③ MS3100 PARTS ONLY

SEE ENGINEERING STANDARDS APPROVAL RECORD FOR ORIGINAL SIGNATURES AND CHANGE SUMMARY

DRAWN	B. McDONALD	MOUNTING HOLES, MS3100 & MS3102 ELECTRICAL CONNECTORS	DS 16
CHECKED	B. EDWARDS		
STRESSED	---		SHEET: 2 of 2
APPROVED	S. HAMID		

REV:

REV:

REV:

REV:

REV:

REV:

APPROVED: 11 NOV 99