

THE INFORMATION, TECHNICAL DATA AND DESIGNS DISCLOSED IN THIS DOCUMENT (THE "INFORMATION") ARE EITHER THE EXCLUSIVE PROPERTY OF BOMBARDIER INC., OR ARE SUBJECT TO PROPRIETARY RIGHTS OF OTHERS. THE INFORMATION IS NOT TO BE USED FOR DESIGN OR MANUFACTURE, OR DISCLOSED TO OTHERS WITHOUT THE EXPRESS PRIOR WRITTEN CONSENT OF BOMBARDIER INC.

**de HAVILLAND**

CAGE CODE 71867

**DESIGN STANDARD**

THE HOLDER OF THIS DOCUMENT, BY ITS RETENTION AGREES TO HOLD THE INFORMATION IN CONFIDENCE. THESE RESTRICTIONS DO NOT APPLY TO PERSONS HAVING PROPRIETARY RIGHTS IN THE INFORMATION, TO THE EXTENT OF THOSE RIGHTS

REVISED REVISION TABLE SHEETS "1" & "18" HAVE BEEN RAISED AT ISSUES "Y" & "B" RESPECTIVELY

**SHEET / DASH NO. INDEX**

DASH NO.	SEE SHT	DASH NO.	SEE SHT	DASH NO.	SEE SHT	DASH NO.	SEE SHT	DASH NO.	SEE SHT
-1	2	-21	5	-41	3	-61	4		
-2	4	-22	16	-42	8	-62	4		
-3	2	-23	13	-43	7	-63	4		
-4	2	-24	8	-44	N/A	-64	6		
-5	2	-25	8	-45	8	-65	6		
-6	7	-26	9	-46	9	-66	4		
-7	4	-27	5	-47	10	-67	15		
-8	4	-28	5	-48	10	-68	18		
-9	5	-29	5	-49	16	-69	18		
-10	4	-30	6	-50	8	-70	18		
-11	4	-31	10	-51	11	-71	19		
-12	2	-32	8	-52	6	-72	15		
-13	3	-33	4	-53	16	-73	16/17		
-14	2	-34	14	-54	8	-74	18		
-15	4	-35	14	-55	6	-75	4		
-16	4	-36	4	-56	8	-76	13		
-17	13	-37	3	-57	12				
-18	9	-38	13	-58	12				
-19	4	-39	8	-59	3				
-20	8	-40	11	-60	14				

**LIST OF CURRENT SHEETS**

SHEET	1	1A	1B	1C	2	3	4	5	6	7	8	9	10	11	12	13	14
REV	Y	H	-	-	E	L	D	F	C	D	F	G	F	F	B	H	F
SHEET	15	16	17	18	19	20	21										
REV	F	E	D	B	C	A *	A *										

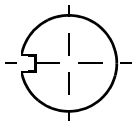
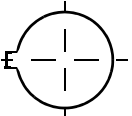
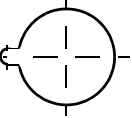
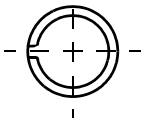
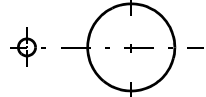
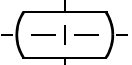
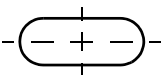
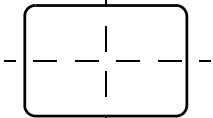
\* CANCELLED

SEE ENGINEERING STANDARDS APPROVAL RECORD FOR ORIGINAL SIGNATURES AND CHANGE SUMMARY

DRAWN	B. EDWARDS	<b>HOLE REQUIREMENTS, PANEL CUT-OUTS</b>	<b>DS 18</b>
CHECKED	J. ROTSCH		
STRESSED	---		SHEET: <b>1</b>
APPROVED	B. EDWARDS		

APPROVED: 31 MAR 1983 REV: W - 21 OCT 2009 REV: Y - 19AUG 2016 REV: Q - 07 JAN 1999 REV: T - 26 OCT 1999 REV: U - 06 APR 2001 REV: V - 16 JUL 2001


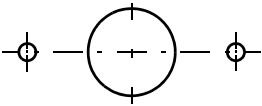
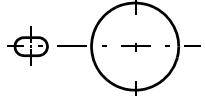
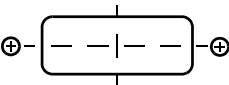
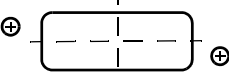
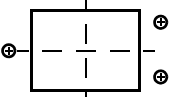
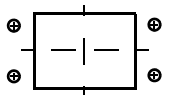
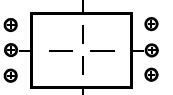
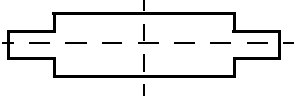
**Table 1: VISUAL LISTING - PANEL CUTOUTS**

HOLE CONFIGURATION	APPLICATION	REF SHT
FEMALE KEY 	SUB MINIATURE SWITCHES AN & MS SINGLE HOLE MOUNT SWITCHES POTENTIOMETERS - MINIATURE SWITCHES	2
MALE KEY 	PANEL LIGHTS CO-AXIAL CONNECTOR AUTO-PILOT FLIGHT CONTROLLER	2
MALE KEY - RADIUS END 	AMPHENOL MINIATURE CONNECTORS MS3454 SERIES ELECTRICAL CONNECTOR	3
C'BORE 	EDGE LIT PANELS	3
TAB LOCKING HOLE 	ROTARY SWITCHES, POTENTIOMETERS, CIRCUIT BREAKERS	4
SLOT - DIAMETRAL RADIUS 	SUBMINIATURE SWITCHES	5
SLOT - FULL RADIUS 	CLIP NUTS	5
SQUARE/RECT - PUNCHED 	CLIP NUTS VIVISUN 20/20 SWITCHES	6

SEE ENGINEERING STANDARDS APPROVAL RECORD FOR ORIGINAL SIGNATURES AND CHANGE SUMMARY

DRAWN	B. McDONALD	<b>HOLE REQUIREMENTS, PANEL CUT-OUTS</b>	<b>DS 18</b>
CHECKED	W. SIMMONS		
STRESSED	---		SHEET: 1A
APPROVED	B. EDWARDS		

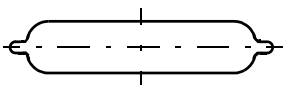
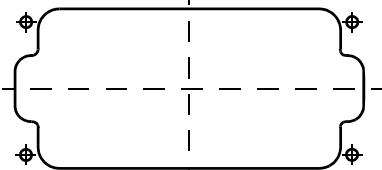
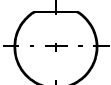
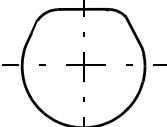
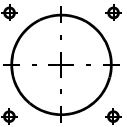
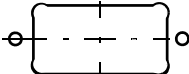
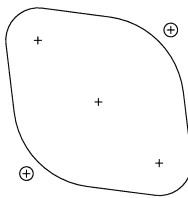
**Table 1: VISUAL LISTING - PANEL CUTOUTS**

HOLE CONFIGURATION	APPLICATION	REF SHT
<p>SQUARE/RECT - ROUTED</p> 	VIVISUN 20/20 SWITCHES	6
<p>LEAD WIRE HOLES - PCB</p> 	GRIMES PANEL LIGHTS PCB BACKING	7
<p>SLOTTED TAB LOCKING HOLE</p> 	KLIXON TYPE CIRCUIT BREAKERS	7
<p>SQUARE/RECT - 2 MTG HOLES - INLINE</p> 	RELAYS PUSH SWITCHES	8
<p>SQUARE/RECT - 2 MTG HOLES - OFFSET</p> 	RELAYS	9
<p>SQUARE/RECT - 3 MTG HOLES PUNCHED</p> 	RELAYS	9
<p>SQUARE/RECT - 4 MTG HOLES PUNCHED</p> 	RELAYS	10
<p>SQUARE/RECT - 6 MTG HOLES PUNCHED</p> 	RELAYS	10
<p>RECTANGULAR/SLOTTED</p> 	SUBMINIATURE RECTANGULAR CONNECTOR	11

SEE ENGINEERING STANDARDS APPROVAL RECORD FOR ORIGINAL SIGNATURES AND CHANGE SUMMARY

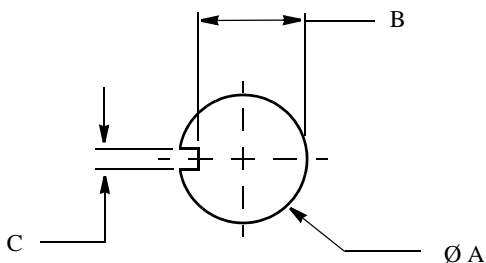
DRAWN	B. McDONALD	<p><b>HOLE REQUIREMENTS, PANEL CUT-OUTS</b></p>	<p><b>DS 18</b></p>
CHECKED	W. SIMMONS		
STRESSED	---		<p>SHEET: <b>1B</b></p>
APPROVED	B. EDWARDS		

**Table 1: VISUAL LISTING - PANEL CUTOUTS**

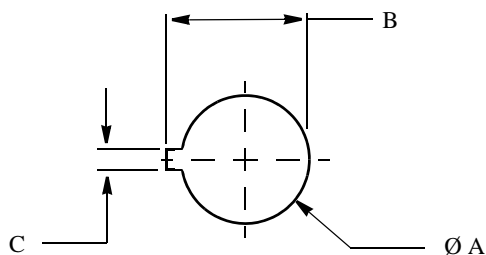
HOLE CONFIGURATION	APPLICATION	REF SHT
<p>RECTANGULAR/SLOTTED</p> 	D-SUBMINIATURE RECTANGULAR CONNECTORS	11
<p>RECTANGULAR - 4 MTG HOLES</p> 	DPX2, DPX3 REAR MOUNT CONNECTORS	12
<p>'D' HOLE - PUNCHED</p> 	MINIATURE CO-AXIAL FEED THRU MIL-C-26482/MIL-C-83723 BULKHEAD CONNECTORS CUTLER HAMMER INDICATOR LIGHTS	13
<p>'D' HOLE - ROUTED</p> 	MINIATURE CO-AXIAL FEED THRU MIL-C-26482/MIL-C-3899 CONN MIL-C-83723/74 JAM NUT RECEPTACLE S5545 WIRE CABLE PRESS SEAL	14/15
<p>BULKHEAD MOUNT</p> 	MIL-C-26482 WALL MOUNT RECEPTACLE MIL-C-83723 WALL MOUNT RECEPTACLE MIL-C-38999 WALL MOUNT RECEPTACLE PANEL JACKS	16/17
<p>SQUARE/RECT - 2 MTG HOLES ROUTED</p> 	RELAYS PUSH SWITCHES	18
<p>SPECIAL</p> 		19

SEE ENGINEERING STANDARDS APPROVAL RECORD FOR ORIGINAL SIGNATURES AND CHANGE SUMMARY

DRAWN	B. McDONALD	<b>HOLE REQUIREMENTS, PANEL CUT-OUTS</b>	<b>DS 18</b>
CHECKED	W. SIMMONS		
STRESSED	---		SHEET: <b>1C</b>
APPROVED	B. EDWARDS		



DS No.	HOLE DIMENSIONS			REQUIRED FOR
	Ø A + .010 - .000	B ± .005	C + .000 - .010	
DS18-1	.265	.234	.046	SUB MINIATURE SWITCHES
DS18-3	.484	.453	.062	AN & MS SINGLE HOLE MOUNT SWITCHES
DS18 -5	.375	.344	.062	POTENTIOMETERS - MINIATURE SWITCHES



DS No.	HOLE DIMENSIONS			REQUIRED FOR
	Ø A + .000 - .010	B ± .005	C + .010 - .000	
DS18-4	.484	.515	.062	PANEL LIGHTS
DS18-12	.339	.370	.070	CO-AXIAL CONNECTOR
DS18 -14	.650	.681	.065	AUTO-PILOT FLIGHT CONTROLLER

SEE ENGINEERING STANDARDS APPROVAL RECORD FOR ORIGINAL SIGNATURES AND CHANGE SUMMARY

DRAWN	B. McDONALD
CHECKED	J. ROTSCH
STRESSED	---
APPROVED	S. HAMID

## HOLE REQUIREMENTS, PANEL CUT-OUTS

**DS 18**

SHEET: 2

REDRAWN

E

REV:

REV: E - 13 FEB 98

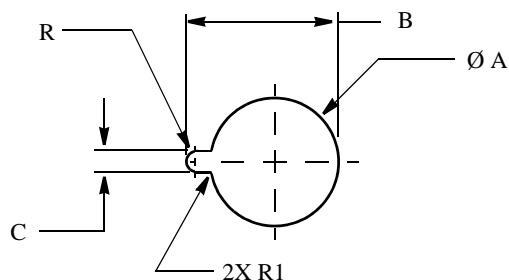
REV: D - FEB 63

REV: C - MAY 62

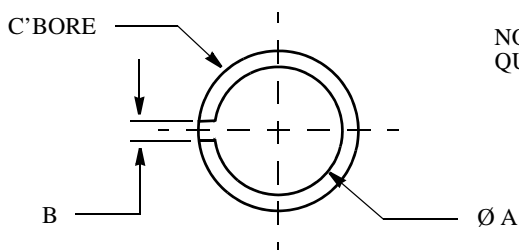
REV: B - FEB 62

REV: A - JUL 61

APPROVED: 6 APR 1961



DS No.	SHELL SIZE	HOLE DIMENSIONS				REQUIRED FOR
		Ø A + .010 - .000	B + .010 - .000	C + .010 - .000	R1 ± .010	
DS18-41	N/A	.390	.562	.125	N/A	AMPHENOL MINIATURE CONNECTORS - 126 SERIES, -214, -233,-214-1001, 215-1002 ONLY
DS18-59-1	22	1.505	1.676	.100	.120	MS3454 SERIES ELECTRICAL CONNECTOR
DS18-59-2	24	1.380	1.550			
DS18-59-3	20	1.255	1.426			



NOTE:  
QUOTE KEY ANGLE ON DRAWING

DS No.	HOLE DIMENSIONS				REQUIRED FOR
	Ø A + .010 - .000	C'BORE		B + .010 - .000	
		DIA + .010 - .000	DEPTH ± .005		
DS18-13	.320	.438	.040	.065	CONNECTOR, INSULATED, COASTAL DYNAMICS CORP #33 ETC., (EDGE LIT PANELS)
DS18-37	.453	.562	.040	.065	

SEE ENGINEERING STANDARDS APPROVAL RECORD FOR ORIGINAL SIGNATURES AND CHANGE SUMMARY

DRAWN	B. McDONALD
CHECKED	J. ROTSCH
STRESSED	---
APPROVED	S. HAMID

## HOLE REQUIREMENTS, PANEL CUT-OUTS

**DS 18**

SHEET: 3

REDRAWN

L

REV:

REV:

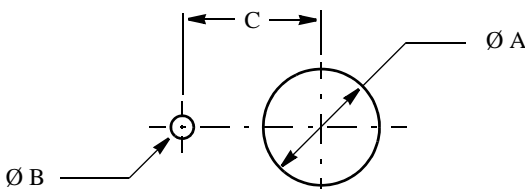
REV:

REV: L - 13 FEB 98

REV: K - 23 OCT 79

REV: J - 23 MAR 78

APPROVED: 23 JUL 1963



DS No.	HOLE DIMENSIONS			REQUIRED FOR
	Ø A +.006 -.001	Ø B +.005 -.001	C ± .010	
DS18-2	.484	.128	.388	AN & MS ONE HOLE MOUNT SWITCHES WITH LOCKING TAB
DS18-7	.257	.093	.388	
DS18-8	.257	.093	.238	
DS18-10	.375	.128	.440	MINIATURE ROTARY SWITCHES
DS18-11	.375	.128	.530	
DS18-15	.484	.128	.388	CIRCUIT BREAKER MOUNT
DS18-16	.422	.156	.560	POTENTIOMETER MOUNT
DS18-19	.453	.128	.388	MS26574 CIRCUIT BREAKER MOUNTING
DS18-33	.625	.128	.450	LANDING GEAR LIMIT SWITCHES
DS18-36	.484	.128	.366	TEST SWITCH - DOPPLER
DS18-61	.313	.128	.375	RV5 SERIES VARIABLE RESISTOR
DS18-62	.406	.128	.432	A90 SERIES ROTARY SWITCH
DS18-63	.416	.161	.375	POTENTIOMETER P/N 055-550R103A
DS18-66	.386	.128	.440	
DS18-75	.281	.073	.260	

SEE ENGINEERING STANDARDS APPROVAL RECORD FOR ORIGINAL SIGNATURES AND CHANGE SUMMARY

DRAWN	B. McDONALD	<b>HOLE REQUIREMENTS, PANEL CUT-OUTS</b>	<b>DS 18</b>
CHECKED	J. ROTSCH		
STRESSED	---		SHEET: <b>4</b>
APPROVED	S. HAMID		

DS18-75 ADDED

REV:

REV:

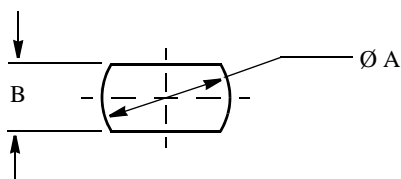
REV: D - 23 APR 98

REV: C - 13 FEB 98

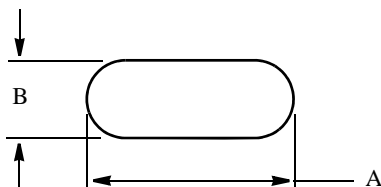
REV: B - 23 OCT 79

REV: A - JUN 67

APPROVED: 29 JUN 1966



DS No.	HOLE DIMENSIONS		REQUIRED FOR
	Ø A +.010 -.000	B +.010 -.000	
DS18-9	.260	.210	SUBMINIATURE SWITCHES
DS18-21	.375	.250	P/N C5-HM-1130-27



DS No.	HOLE DIMENSIONS		REQUIRED FOR
	A +.010 -.000	B +.010 -.000	
DS18-27	.500	.223	CLIP NUTS
DS18-28	.920	.348	
DS18-29	.600	.348	

SEE ENGINEERING STANDARDS APPROVAL RECORD FOR ORIGINAL SIGNATURES AND CHANGE SUMMARY

DRAWN	B. McDONALD
CHECKED	J. ROTSCH
STRESSED	---
APPROVED	S. HAMID

## HOLE REQUIREMENTS, PANEL CUT-OUTS

**DS 18**

SHEET: **5**

REDRAWN

F

REV:

REV:

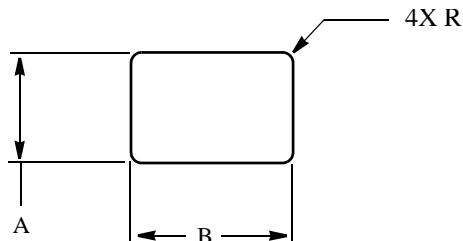
REV:

REV:

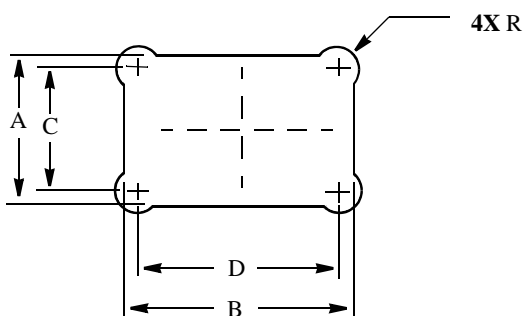
REV:

REV: F - 13 FEB 98

APPROVED: 5 FEB 1973



DS No.	HOLE DIMENSIONS			REQUIRED FOR
	A + .010 - .000	B + .010 - .000	R	
DS18-30	.500	.500	.030 -.060	CLIP NUTS
DS18-52	.689	.689	.031 MAX	VIVISUN 20/20 SER 99 SWITCH, PUNCHED HOLE
DS18-64	.696	.696		VIVISUN 20/20 SER 95 SWITCH, PUNCHED HOLE



DS No.	HOLE DIMENSIONS					REQUIRED FOR
	A + .010 - .000	B + .010 - .000	C ± .005	D ± .005	R ± .010	
DS18-55	.694	.694	.544	.544	.094	VIVISUN 20/20 SER 99 SWITCH, N/C ROUTED HOLE
DS18-65	.701	.701	.549	.549	.094	VIVISUN 20/20 SER 95 SWITCH, N/C ROUTED HOLE

SEE ENGINEERING STANDARDS APPROVAL RECORD FOR ORIGINAL SIGNATURES AND CHANGE SUMMARY

DRAWN	B. McDONALD
CHECKED	J. ROTSCH
STRESSED	---
APPROVED	S. HAMID

## HOLE REQUIREMENTS, PANEL CUT-OUTS

**DS 18**

SHEET: 6

REDRAWN

C

REV:

REV:

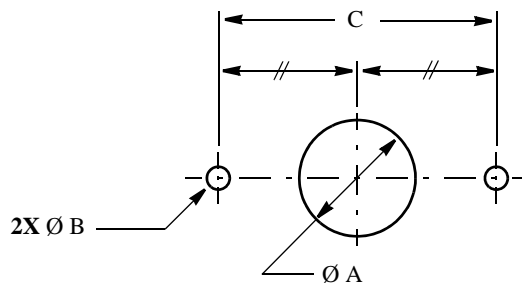
REV:

REV: C - 13 FEB 98

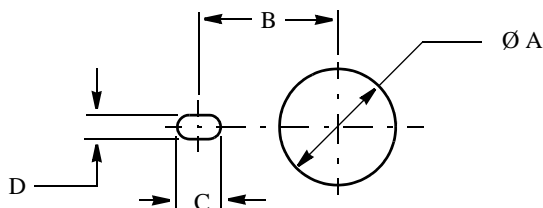
REV: B - 18 FEB 74

REV: A - 30 OCT 73

APPROVED: 25 OCT 1973



DS No.	HOLE DIMENSIONS			REQUIRED FOR
	Ø A +.010 -.000	Ø B +.004 -.001	C ± .005	
DS18-6	.187	.070	.403	GRIMES B8900-1-327 PANEL LIGHTS INSTALLED IN PRINTED CIRCUIT BACKING



DS No.	HOLE DIMENSIONS				REQUIRED FOR
	Ø A +.010- .000	B ± .010	C +.010 -.000	D +.010 -.000	
DS18-43	.484	.375	.170	.109	KLIXON TYPE 3MC & 7MC C/BREAKERS

SEE ENGINEERING STANDARDS APPROVAL RECORD FOR ORIGINAL SIGNATURES AND CHANGE SUMMARY

DRAWN	B. McDONALD
CHECKED	J. ROTSCH
STRESSED	---
APPROVED	S. HAMID

## HOLE REQUIREMENTS, PANEL CUT-OUTS

**DS 18**

SHEET: 7

REV:

REV:

REV: D - 13 FEB 98

REV: C - 11 FEB 76

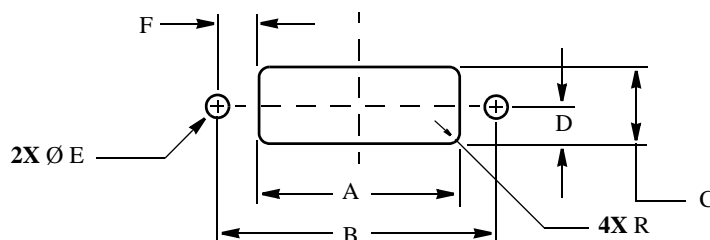
REV: B - 18 FEB 74

REV: A-

APPROVED: 6 NOV 1973

REDRAWN

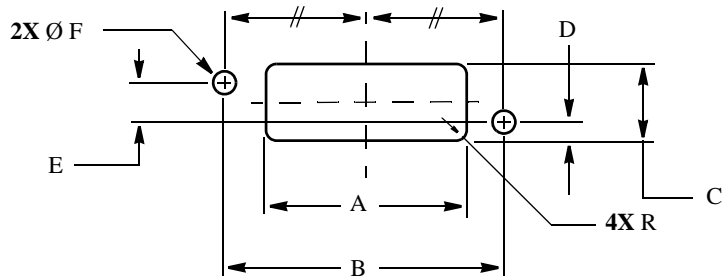
D



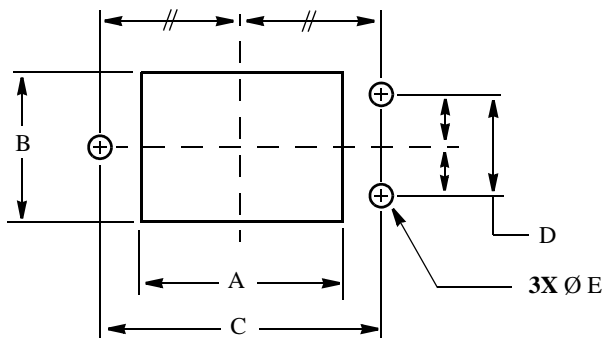
DS No.	HOLE DIMENSIONS							REQUIRED FOR
	A + .010 - .000	B ± .005	C + .010 - .000	D + .005 - .000	Ø E + .005 - .001	R (RAD) ± .010	F F ± .005	
DS18-20*	1.156	1.406	.656	.328	.147	N/A	.125	DSC 35 RELAY MOUNTING
DS18-24*	.890	1.500	.890	.445	.147	N/A	.305	MIL-S-22885/72 ILLUMINATED PUSH SWITCH OR “LICON” TYPE 04
DS18-25*	1.062	1.406	.562	.281	.209	N/A	.172	RELAY SOCKET - DEUTSCH SE210-1A (REAR MOUNTED)
DS18-32*	.800	1.060	.420	.210	.171	N/A	.130	RELAY BASE HRCW-5KJ
DS18-39*	1.062	1.406	.562	.281	.147	N/A	.172	RELAY SOCKET - APPLETON 45116 (REAR MOUNTED)
DS18-42	1.425	1.875	.550	.275	.154	.095	.225	GRIMES LIGHT ASSY 65-0121-XXX
DS18-45*	1.080	1.406	.550	.275	.209	N/A	.163	---
DS18-50-1	.820	1.220	.820	.410	.144	.031	.155	PUNCHED HOLE FOR VIVISUN 20/20 SER 99 SWITCH MOUNT FOR USE WITH CSP 369 BRACKET INST’N 2ND DASH NO. = No. OF SWITCH UNITS NOTE - FOR N/C ROUTED HOLE USE DS18-56
DS18-50-2	1.570	1.970						
DS18-50-2A	1.630	1.970						
DS18-50-3	2.320	2.720						
DS18-50-4	3.070	3.470		.375				
DS18-50-5	3.820	4.220						
DS18-50-6	4.570	4.970						
DS18-54	1.110	1.406	.550	.275	.203	.050	.148	JC & JCA RELAY
DS18-56-1	.820	1.220	.860	.430	.144	.094	.155	N/C ROUTED HOLE HOLE FOR VIVI-SUN 20/20 SER 99 SWITCH MOUNT FOR USE WITH CSP 369 BRACKET INST’N 2ND DASH NO. = No. OF SWITCH UNITS NOTE - FOR PUNCHED HOLE USE DS18-50
DS18-56-2	1.570	1.970						
DS18-56-2A	1.630	1.970						
DS18-56-3	2.320	2.720						
DS18-56-4	3.070	3.470		.395				
DS18-56-5	3.820	4.220						
DS18-56-6	4.570	4.970						
* NOTE - NOT TO BE USED IN PRIMARY STRUCTURES								

SEE ENGINEERING STANDARDS APPROVAL RECORD FOR ORIGINAL SIGNATURES AND CHANGE SUMMARY

DRAWN	B. McDONALD	<b>HOLE REQUIREMENTS, PANEL CUT-OUTS</b>	<b>DS 18</b>
CHECKED	J. ROTSCH		
STRESSED	---		SHEET: 8
APPROVED	S. HAMID		



DS No.	HOLE DIMENSIONS							REQUIRED FOR
	A +.010 -.000	B ± .005	C +.010 -.000	D + .005 - .000	E + .005 - .000	Ø F +.005 -.001	R ± .010	
<b>DS18-18</b>	.830	1.000	.430	.153	.125	.098	.015	DSC 36 RELAY MOUNTING



DS No.	HOLE DIMENSIONS					REQUIRED FOR
	A +.010 -.000	B + .010 - .000	C ±.005	D ± .005	Ø E +.005 -.001	
<b>DS18-26</b>	1.062	1.062	1.406	.625	.209	DSC 36 RELAY MOUNTING
<b>DS18-46</b>	1.080	1.050	1.406	.625	.209	

SEE ENGINEERING STANDARDS APPROVAL RECORD FOR ORIGINAL SIGNATURES AND CHANGE SUMMARY

DRAWN	B. McDONALD
CHECKED	J. ROTSCH
STRESSED	---
APPROVED	S. HAMID

## HOLE REQUIREMENTS, PANEL CUT-OUTS

**DS 18**

SHEET: 9

REDRAWN

G

REV:

REV: G- 13 FEB 98

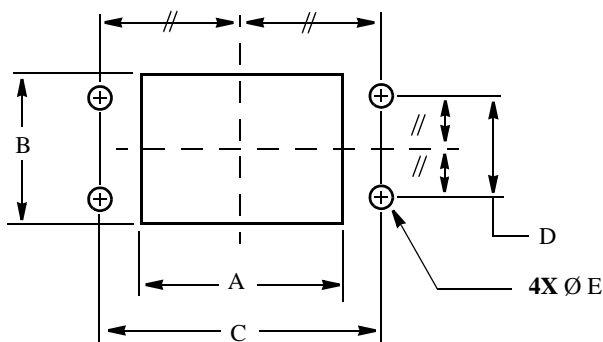
REV: F- 21 FEB 86

REV: E -

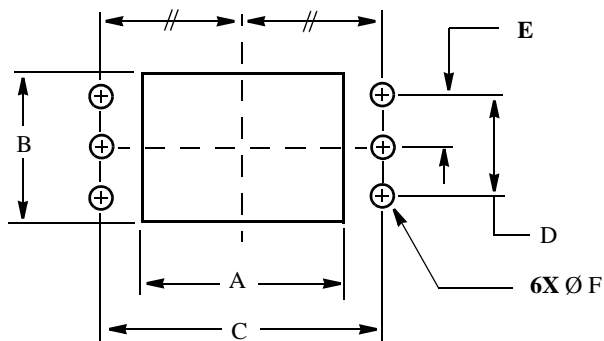
REV: D - 15 NOV 76

REV: C - 1 NOV 76

APPROVED: 10 MAR 75



DS No.	HOLE DIMENSIONS					REQUIRED FOR
	A +.010 -.000	B +.010 -.000	C ±.005	D ±.005	Ø E +.005 -.001	
<b>DS18-31</b>	.810	.800	1.080	.400	.128	RELAY BASE HRCM-5KJ
<b>DS18-48</b>	2.500	1.780	2.783	1.437	.120	CANNON DPX2 FRONT MOUNT CONNECTOR



DS No.	HOLE DIMENSIONS						REQUIRED FOR
	A +.010 -.000	B +.010 -.000	C ±.005	D ±.005	E ±.005	Ø F +.005 -.001	
<b>DS18-47</b>	3.740	1.780	4.026	1.437	.719	.120	CANNON DPX3 FRONT MOUNT CONNECTOR

SEE ENGINEERING STANDARDS APPROVAL RECORD FOR ORIGINAL SIGNATURES AND CHANGE SUMMARY

DRAWN	B. McDONALD
CHECKED	J. ROTSCH
STRESSED	---
APPROVED	S. HAMID

## HOLE REQUIREMENTS, PANEL CUT-OUTS

**DS 18**

SHEET: **10**

REDRAWN

F

REV:

REV:

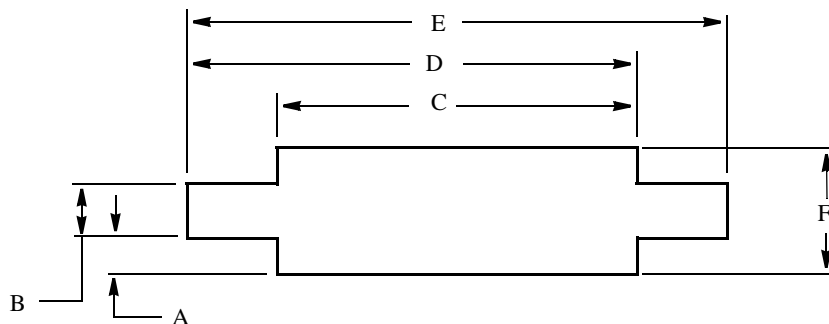
REV:

REV:

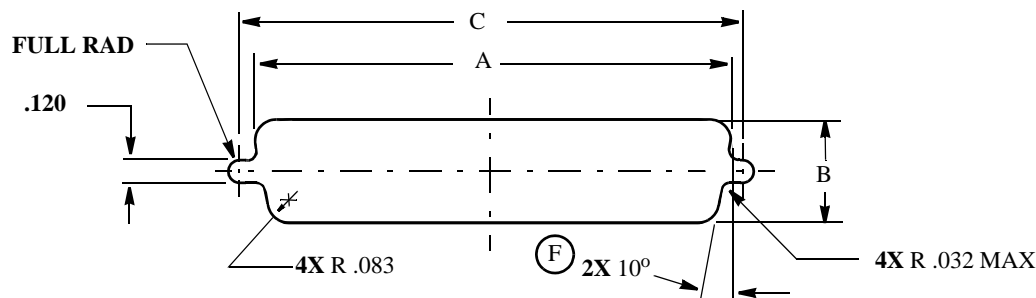
REV: F-13 FEB 98

REV: E-4 FEB 80

APPROVED: 23 FEB 1977



DS No.	HOLE DIMENSIONS ( $\pm .010$ )						PANEL THICKNESS
	A	B	C	D	E	F	
DS18-40-3	.105	.220	.640	.795	.950	.430	.060 MAX
DS18-40-4	.157	.280	.475	.630	.785	.595	
DS18-40-6	.208	.345	.475	.630	.785	.760	
DS18-40-9	.208	.345	.640	.795	.950	.760	
DS18-40-12	.225	.475	.640	.795	.950	.925	
DS18-40-15	.308	.475	.640	.795	.950	1.090	



DS No.	CONN SIZE	HOLE DIMENSIONS ( $\pm .010$ )			REQUIRED FOR
		A	B	C	
DS18-51-1	A	1.202	.513	1.312	D-SUBMINIATURE RECTANGULAR CONNECTOR
DS18-51-2	B	1.743	.513	1.852	
DS18-51-3	C	2.391	.513	2.500	
DS18-51-4	D	2.297	.623	2.406	
DS18-51-5	E	.874	.513	.984	

SEE ENGINEERING STANDARDS APPROVAL RECORD FOR ORIGINAL SIGNATURES AND CHANGE SUMMARY

DRAWN	B. McDONALD
CHECKED	J. ROTSCHE
STRESSED	---
APPROVED	S. HAMID

## HOLE REQUIREMENTS, PANEL CUT-OUTS

**DS 18**

SHEET: 11

DS18-51 ANGLE DIM 10° ADDED

F

APPROVED: 8 APR 1981

REV: A - 11 AUG 81

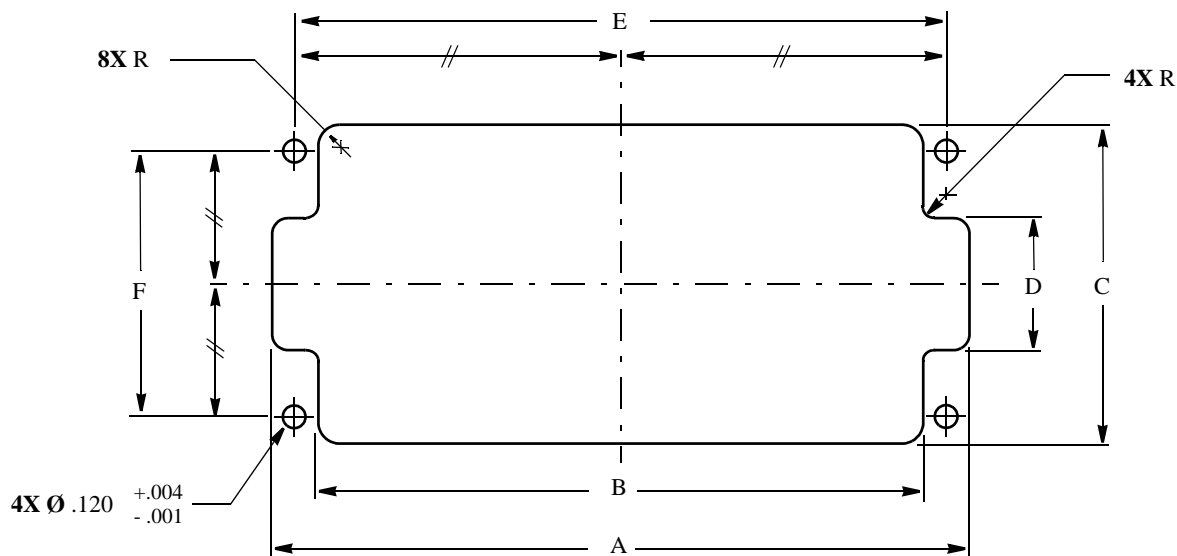
REV: B - 21 OCT 81

REV: C - 9 JUN 82

REV: D - 19 OCT 90

REV: E - 13 FEB 98

REV: F - 20 AUG 98



DS No.	HOLE DIMENSIONS							REQUIRED FOR
	A +.010 -.000	B +.010 -.000	C +.010 -.000	D +.010 -.000	E ± .005	F ± .005	R ± .010	
DS18-57	4.310	3.740	1.780	.750	4.026	1.437	.125	DPX3 CONNECTOR, REAR MOUNT (REF CANNON CE9438-7004)
DS18-58	3.070	2.500	1.780	.750	2.783	1.437	.156	DPX2 CONNECTOR, REAR MOUNT (REF CANNON CE9438-7002)

SEE ENGINEERING STANDARDS APPROVAL RECORD FOR ORIGINAL SIGNATURES AND CHANGE SUMMARY

DRAWN	B. McDONALD
CHECKED	J. ROTSCH
STRESSED	---
APPROVED	S. HAMID

## HOLE REQUIREMENTS, PANEL CUT-OUTS

**DS 18**

SHEET: 12

REDRAWN

B

REV:

REV:

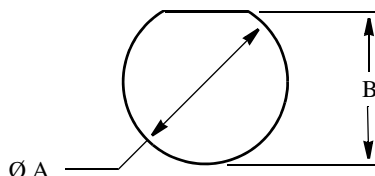
REV:

REV:

REV: B - 13 FEB 98

REV: A - 7 JUL 81

APPROVED: 25 JUN 1981



DS No.	SHELL SIZE	HOLE DIMENSIONS		REQUIRED FOR
		Ø A +.010 -.000	B +.000 -.010	
DS18-17	---	.380	.348	MINIATURE COAXIAL FEED THRU'S
<del>DS18-17A</del> (1)	---	.755	.350	
<del>DS18-17B</del> (2)	---	.500	.470	
<del>DS18-23-10</del> (3)	10	.703	.669	MIL-C-26482 AND MIL-C-83723 BULKHEAD CONNECTORS
<del>DS18-23-12</del> (3)	12	.890	.830	
<del>DS18-23-14</del> (3)	14	1.015	.933	
<del>DS18-23-16</del> (3)	16	1.140	1.084	
<del>DS18-23-18</del> (3)	18	1.265	1.208	
<del>DS18-23-20</del> (3)	20	1.390	1.333	
<del>DS18-23-22</del> (3)	22	1.515	1.459	
<del>DS18-23-24</del> (3)	24	1.640	1.584	
DS18-23-26	---	.468	.448	INDICATOR LIGHTS (CUTLER-HAMMER)
DS18-23-27	---	.625	.605	
DS18-38	---	.192	.160	
DS18-76	---	.380	.370	ELDEMA DH SERIES LAMPS
(1) INACTIVE FOR NEW DESIGN - USE DS18-35-1				
(2) INACTIVE FOR NEW DESIGN - USE DS18-35-2				
(3) INACTIVE FOR NEW DESIGN - USE DS18-67-(SHELL SIZE)				

SEE ENGINEERING STANDARDS APPROVAL RECORD FOR ORIGINAL SIGNATURES AND CHANGE SUMMARY

DRAWN	B. McDONALD	<b>HOLE REQUIREMENTS, PANEL CUT-OUTS</b>	<b>DS 18</b>
CHECKED	J. ROTSCH		
STRESSED	---		SHEET: <b>13</b>
APPROVED	S. HAMID		

DS18-17B INACTIVE FOR NEW DESIGN  
USE DS18-35-2

REV: H - 13 SEP 99

REV: G - 5 AUG 98

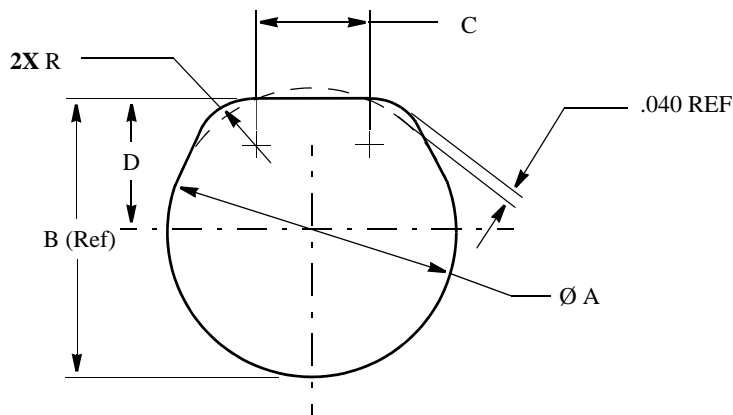
REV: F - 19 JUN 98

REV: E - 16 MAR 98

REV: D - 13 FEB 98

REV: C - 18 JUN 82

APPROVED: 17 AUG 1981



DS No.	SHELL SIZE	HOLE DIMENSIONS					REQUIRED FOR
		Ø A ± .005	B (Ref)	C ± .005	D ± .005	R ± .010	
<del>DS18-34-8*</del>	8	.572	.536	.310	.250	.125	MIL-C-26482 SER I JAM NUT RECEPTACLE * <b>INACTIVE FOR NEW DESIGN - USE DS18-67</b>
<del>DS18-34-10*</del>	10	.697	.661	.365	.313		
<del>DS18-34-12*</del>	12	.895	.824	.395	.377	.250	
<del>DS18-34-14*</del>	14	1.010	.948	.440	.443		
<del>DS18-34-16*</del>	16	1.135	1.072	.495	.505		
<del>DS18-34-18*</del>	18	1.260	1.197	.545	.567		
<del>DS18-34-20*</del>	20	1.385	1.322	.590	.630		
<del>DS18-34-22*</del>	22	1.510	1.447	.635	.692		
<del>DS18-34-24*</del>	24	1.635	1.572	.670	.755		
DS18-35-1	---	.760	.730	.270	.350	.250	MINIATURE COAXIAL
DS18-35-2	---	.500	.470	.250	.220	.125	
DS18-60-8	8	.635	.605	.355	.288	.125	MIL-C-83723/74 JAM NUT RECEPTACLE
DS18-60-10	10	.760	.730	.380	.350		
DS18-60-12	12	.947	.917	.360	.444	.250	
DS18-60-14	14	1.010	.980	.380	.475		
DS18-60-16	16	1.135	1.105	.425	.538		
DS18-60-18	18	1.260	1.229	.465	.599		
DS18-60-20	20	1.385	1.354	.505	.662		
DS18-60-22	22	1.510	1.479	.540	.724		
DS18-60-24	24	1.635	1.604	.570	.787		

SEE ENGINEERING STANDARDS APPROVAL RECORD FOR ORIGINAL SIGNATURES AND CHANGE SUMMARY

DRAWN	B. McDONALD
CHECKED	J. ROTSCH
STRESSED	I. GHEORGHU
APPROVED	S. HAMID

## HOLE REQUIREMENTS, PANEL CUT-OUTS

# DS 18

SHEET: 14

F DS18-35-2 ADDED

REV: F - 13 SEP 99

REV: E, 07 JAN 99

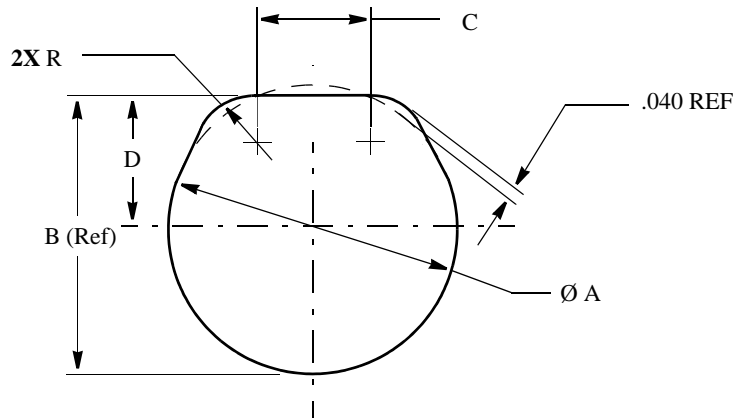
REV: D - 13 FEB 98

REV: C - 19 OCT 91

REV: B - 9 JUN 82

REV: A - 24 NOV 81

APPROVED: 29 OCT 81



DS No.	SHELL SIZE	HOLE DIMENSIONS					REQUIRED FOR
		Ø A ± .005	B (Ref)	C ± .005	D ± .005	R ± .010	
DS18-67-8	8	.572	.536	.310	.250	.125	MIL-C-26482 SER I & SER II MIL-C-38999 SER I & SER III JAM NUT RECEPTACLE
DS18-67-9	9/10	.705	.665	.395	.313		
DS18-67-11	11	.830	.765	.475	.350		
DS18-67-12	12	.895	.824	.515	.377		
DS18-67-13	13/14	1.015	.950	.505	.443	.188	
DS18-67-15	15/16	1.140	1.080	.495	.510	.250	
DS18-67-17	17/18	1.265	1.202	.550	.570		
DS18-67-19	19/20	1.390	1.330	.585	.635		
DS18-67-21	21/22	1.515	1.455	.625	.698		
DS18-67-23	23/24	1.640	1.580	.665	.760		
DS18-67-25	25	1.765	1.705	.700	.823		
DS18-72-1	---	1.884	1.812	.775	.870	.250	WIRE CABLE PRESSURE SEALS - REF CANADAIR S5545
DS18-72-2	---	1.505	1.450	.610	.698		
DS18-72-3	---	1.255	1.200	.525	.573		
DS18-72-4	---	2.510	2.444	.915	1.189		

SEE ENGINEERING STANDARDS APPROVAL RECORD FOR ORIGINAL SIGNATURES AND CHANGE SUMMARY

DRAWN	B. McDONALD	<b>HOLE REQUIREMENTS, PANEL CUT-OUTS</b>	<b>DS 18</b>
CHECKED	J. ROTSCH		
STRESSED	I. GHEORGHU		SHEET: <b>15</b>
APPROVED	S. HAMID		

CHANGE IN DS18-67-9  
'B' WAS .655, 'D' WAS .303

REV: F - 06 APR 01

REV: E - 25 OCT 99

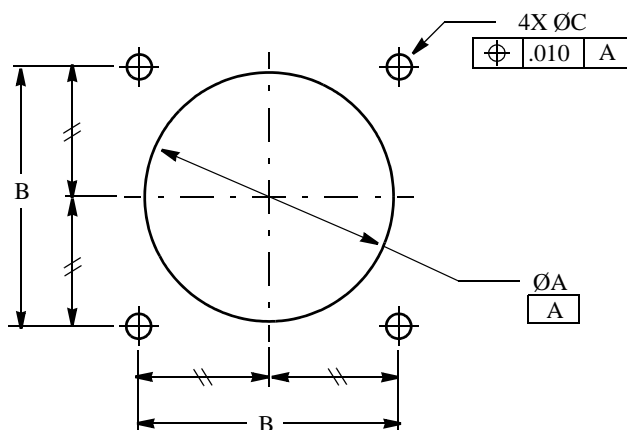
REV: D, 07 JAN 99

REV: C - 29 MAY 98

REV: B - 13 FEB 98

REV: A - 13 OCT 82

APPROVED: 18 JUN 82



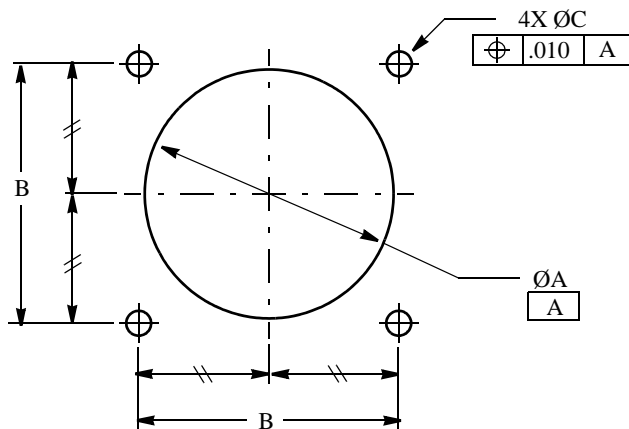
DS No.	SHELL SIZE	HOLE DIMENSIONS		Ø C +.005 -.001	REQUIRED FOR
		Ø A +.010 -.000	B ± .005		
DS18-22-10	10	.685	.719	.125	MIL-C-26482 & MIL-C-83723 WALL MOUNT RECEPTACLE
DS18-22-12	12	.864	.812		
DS18-22-14	14	.989	.906		
DS18-22-16	16	1.113	.969		
DS18-22-18	18	1.238	1.062		
DS18-22-20	20	1.364	1.156		
DS18-22-22	22	1.488	1.250		
DS18-22-24	24	1.615	1.375	.156	
DS18-49	---	.469	.500	.120	BNC PANEL JACK (UG-291 ETC.)
DS18-53	---	.766	.906	.128	HN PANEL JACK (UG-61 ETC.)
DS18-73-08	8	.615	.594	.125	MIL-C-38999 SER II & SER III WALL MOUNT RECEPTACLE
DS18-73-09	9	.631	.719		
DS18-73-10	10	.740			
DS18-73-11	11	.756	.812		
DS18-73-12	12	.865			
DS18-73-13	13	.881	.906		
DS18-73-14	14	.990			
DS18-73-15	15	1.005	.969		
DS18-73-16	16	1.115			

SEE ENGINEERING STANDARDS APPROVAL RECORD FOR ORIGINAL SIGNATURES AND CHANGE SUMMARY

DRAWN	B. McDONALD	<b>HOLE REQUIREMENTS, PANEL CUT-OUTS</b>	<b>DS 18</b>
CHECKED	J. ROTSCH		
STRESSED	I. GHEORGHUI		SHEET: 16
APPROVED	S. HAMID		

Ø A tolerance was ± .005

REV: E - 16 JUL 01  
REV: D - 13 FEB 98  
REV: C - 21 OCT 85  
REV: B - 10 OCT 84  
REV: A - 22 MAR 83  
APPROVED: 19 OCT 1982



DS No.	SHELL SIZE	HOLE DIMENSIONS			REQUIRED FOR
		Ø A +.010 -.000	B ± .005	Ø C +.005 -.001	
DS18-73-17	17	1.193	1.062	.125	MIL-C-38999 SER II & SER III WALL MOUNT RECEPTACLE
DS18-73-18	18	1.239			
DS18-73-19	19	1.256	1.156		
DS18-73-20	20	1.365			
DS18-73-21	21	1.381	1.250		
DS18-73-22	22	1.489			
DS18-73-23	23	1.516	1.375	.156	
DS18-73-24	24	1.616			
DS18-73-25	Ⓓ 25	1.723	1.500		

SEE ENGINEERING STANDARDS APPROVAL RECORD FOR ORIGINAL SIGNATURES AND CHANGE SUMMARY

DRAWN	B. McDONALD
CHECKED	J. ROTSCH
STRESSED	I. GHEORGHIU
APPROVED	S. HAMID

## HOLE REQUIREMENTS, PANEL CUT-OUTS

**DS 18**

SHEET: 17

ⓓ CHANGED ØA FOR DS18-73-25 WAS 1.631

REV:

REV:

REV: D - 21 OCT 2009

REV: C - 16 JUL 2001

REV: B - 13 FEB 1998

REV: A - 15 APR 1987

APPROVED: 12 MAR 1987

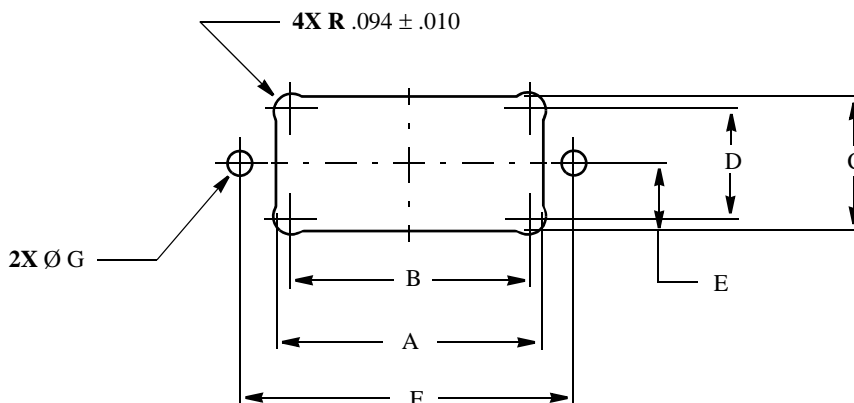
THE INFORMATION, TECHNICAL DATA AND DESIGNS DISCLOSED IN THIS DOCUMENT (THE "INFORMATION") ARE EITHER THE EXCLUSIVE PROPERTY OF BOMBARDIER INC., OR ARE SUBJECT TO PROPRIETARY RIGHTS OF OTHERS. THE INFORMATION IS NOT TO BE USED FOR DESIGN OR MANUFACTURE, OR DISCLOSED TO OTHERS WITHOUT THE EXPRESS PRIOR WRITTEN CONSENT OF BOMBARDIER INC.

**de HAVILLAND**

CAGE CODE 71867

**DESIGN STANDARD**

THE HOLDER OF THIS DOCUMENT, BY ITS RETENTION AGREES TO HOLD THE INFORMATION IN CONFIDENCE. THESE RESTRICTIONS DO NOT APPLY TO PERSONS HAVING PROPRIETARY RIGHTS IN THE INFORMATION, TO THE EXTENT OF THOSE RIGHTS



DS No.	HOLE DIMENSIONS							REQUIRED FOR
	A + .010 - .000	B ± .005	C + .010 - .000	D ± .005	E ± .005	F ± .005	Ø G + .005 - .001	
DS18-68	1.389	1.234	.705	.550	.350	1.730	.125	
DS18-69	1.525	1.370	.595	.440	.295	1.810	.156	
DS18-70	1.165	1.010	.960	.805	.480 <sup>B</sup>	1.395	.156	
DS18-74	1.515	1.360	.700	.545	.350	1.730	.125	

DS18-70: DIMENSION "E" NOW ".480" WAS ".580"

<sup>B</sup>

SEE ENGINEERING STANDARDS APPROVAL RECORD FOR ORIGINAL SIGNATURES AND CHANGE SUMMARY

DRAWN	B. EDWARDS	<b>HOLE REQUIREMENTS, PANEL CUT-OUTS</b>	<b>DS 18</b>
CHECKED	J. ROTSCH		
STRESSED	I. GHEORGHU		SHEET: 18
APPROVED	B. EDWARDS		

APPROVED: 23 OCT 90

REV: A - 13 FEB 98

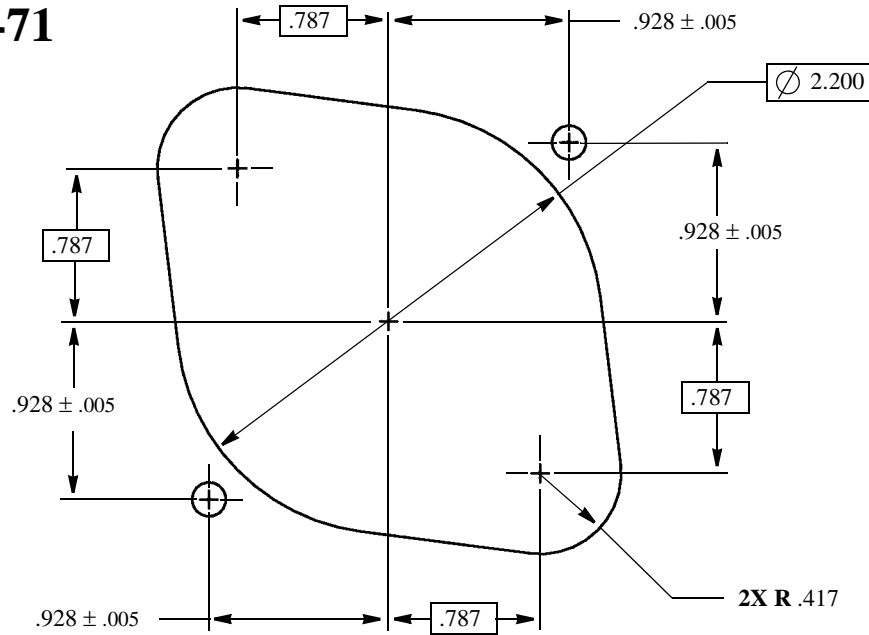
REV: B - 19 AUG 2016

REV:

REV:

REV:

**DS18-71**



**C** REDRAWN

SEE ENGINEERING STANDARDS APPROVAL RECORD FOR ORIGINAL SIGNATURES AND CHANGE SUMMARY

DRAWN	B. McDONALD	<b>HOLE REQUIREMENTS, PANEL CUT-OUTS</b>	<b>DS 18</b>
CHECKED	J. ROTSCH		
STRESSED	---		SHEET: <b>19</b>
APPROVED	S. HAMID		

REV:

REV:

REV:

REV: C - 13 FEB 98

REV: B - 27 OCT 97

REV: A - 12 FEB 96

APPROVED: 23 DEC 93

THE INFORMATION, TECHNICAL DATA AND DESIGNS DISCLOSED IN THIS DOCUMENT (THE "INFORMATION") ARE EITHER THE EXCLUSIVE PROPERTY OF BOMBARDIER INC., OR ARE SUBJECT TO PROPRIETARY RIGHTS OF OTHERS. THE INFORMATION IS NOT TO BE USED FOR DESIGN OR MANUFACTURE, OR DISCLOSED TO OTHERS WITHOUT THE EXPRESS PRIOR WRITTEN CONSENT OF BOMBARDIER INC.

*de HAVILLAND*

CAGE CODE 71867

*DESIGN STANDARD*

THE HOLDER OF THIS DOCUMENT, BY ITS RETENTION AGREES TO HOLD THE INFORMATION IN CONFIDENCE. THESE RESTRICTIONS DO NOT APPLY TO PERSONS HAVING PROPRIETARY RIGHTS IN THE INFORMATION, TO THE EXTENT OF THOSE RIGHTS

**CANCELLED**

**DATA PREVIOUSLY CONTAINED ON THIS PAGE HAS BEEN INCORPORATED ELSEWHERE IN THIS STANDARD. REFER TO INDEX ON PAGE 1 FOR CURRENT LOCATION OF THIS DATA.**

REDRAWN

A

SEE ENGINEERING STANDARDS APPROVAL RECORD FOR ORIGINAL SIGNATURES AND CHANGE SUMMARY

DRAWN	A. McRorie	<b>HOLE REQUIREMENTS, PANEL CUT-OUTS</b>	<b>DS 18</b>
CHECKED	K. Flinders		
STRESSED	J. Hornstein		SHEET: 20
APPROVED	P. Lam		

REV:

REV:

REV:

REV:

REV

REV :- A - 13 FEB 98

APPROVED: 29 MAY 97

THE INFORMATION, TECHNICAL DATA AND DESIGNS DISCLOSED IN THIS DOCUMENT (THE "INFORMATION") ARE EITHER THE EXCLUSIVE PROPERTY OF BOMBARDIER INC., OR ARE SUBJECT TO PROPRIETARY RIGHTS OF OTHERS. THE INFORMATION IS NOT TO BE USED FOR DESIGN OR MANUFACTURE, OR DISCLOSED TO OTHERS WITHOUT THE EXPRESS PRIOR WRITTEN CONSENT OF BOMBARDIER INC.

*de HAVILLAND*

CAGE CODE 71867

*DESIGN STANDARD*

THE HOLDER OF THIS DOCUMENT, BY ITS RETENTION AGREES TO HOLD THE INFORMATION IN CONFIDENCE. THESE RESTRICTIONS DO NOT APPLY TO PERSONS HAVING PROPRIETARY RIGHTS IN THE INFORMATION, TO THE EXTENT OF THOSE RIGHTS

**CANCELLED**  
**DATA PREVIOUSLY CONTAINED ON THIS PAGE HAS BEEN INCORPORATED ELSEWHERE IN THIS STANDARD. REFER TO INDEX ON PAGE 1 FOR CURRENT LOCATION OF THIS DATA.**

REDRAWN

A

SEE ENGINEERING STANDARDS APPROVAL RECORD FOR ORIGINAL SIGNATURES AND CHANGE SUMMARY

DRAWN	A. McRorie	<b>HOLE REQUIREMENTS, PANEL CUT-OUTS</b>	<b>DS 18</b>
CHECKED	K. Flinders		
STRESSED	J. Hornstein		SHEET: 21
APPROVED	P. Lam		

REV:

REV:

REV:

REV:

REV

REV :- A - 13 FEB 98

APPROVED: 29 MAY 97