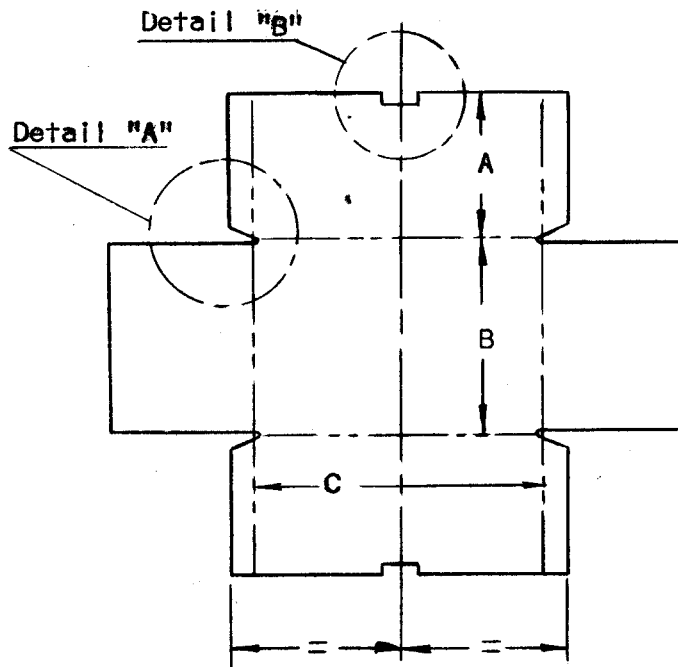
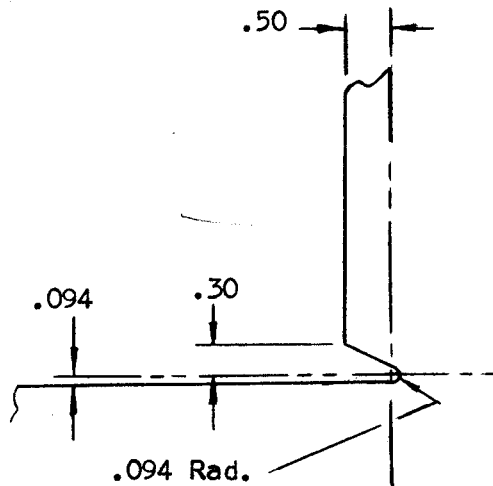


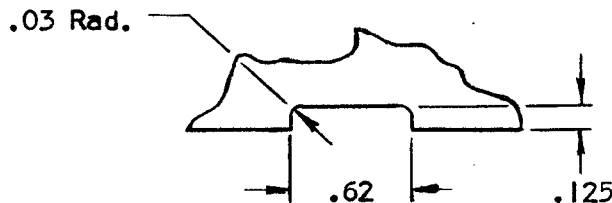
STANDARDS SHEET



Detail "A"



Detail "B"



NOTES:

- (1) Sample box shown at left.
- (2) .50 lip standard.
- (3) Lip to be on inside of box.
- (4) Bend radius as per tool TS-264-12-14.
- (5) Rivet holes as required.
- (6) Dimensions, A, B & C can vary, for limitation see note below.

For Control Box Covers Only

The cutout (Detail "B") is standard, and the inside dimension "C" shall be 4.88".

(A) REVISED 1/3/63 D.S.
 (B) REVISED & REDRAWN 23/1/64

DRAWN	S. SCHRAITNER	CLASSIFICATION	STANDARD
CHECKED	<i>[Signature]</i>	COVERS & BOXES STANDARD DIMENSIONS	DS-56
STRESSED			
APPROVED	<i>[Signature]</i>		

FM 71867