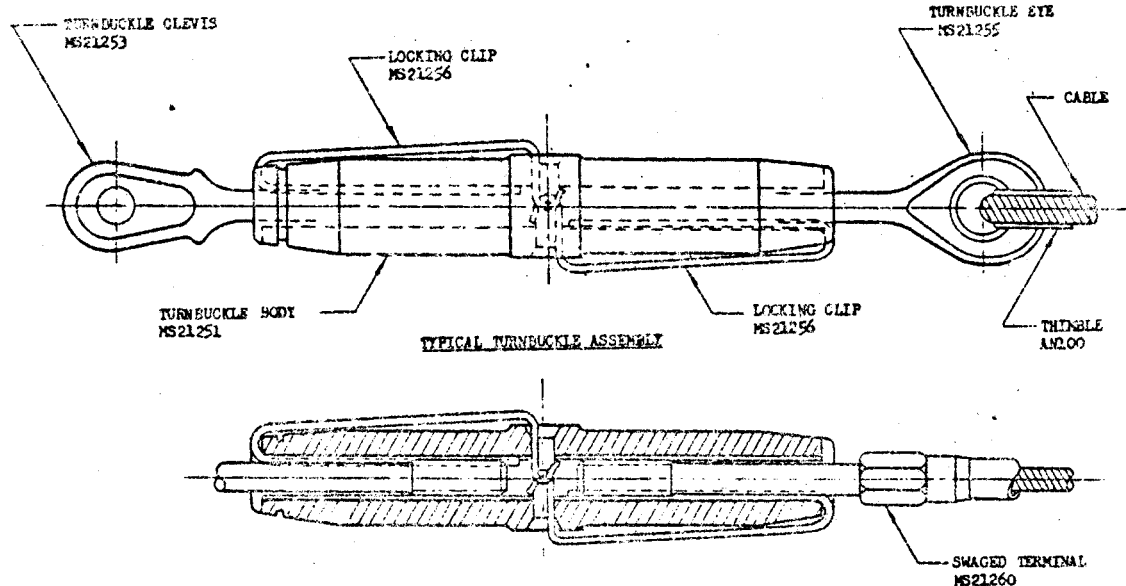


## STANDARDS SHEET



METHOD OF ASSEMBLING LOCKING CLIPS, TURNBUCKLE BODY AND TERMINALS

NOMINAL CABLE DIA	THREAD UNF-3	LOCKING CLIP MS21256	TURNBUCKLE BODY MS21251
1/16	NO. 6-40	-1	-2S
3/32	NO. 10-32	-2	-3S
1/8	1/4-28	-1	-4S
5/32		-2	-4L
		-1	-5S
3/16	5/16-24	-2	-5L
		-1	-6S
7/32	3/8-24	-2	-6L
1/4			-7L
9/32	7/16-20	-3	-8L
5/16	1/2-20		-9L
			-10L

(a) TWO LOCKING CLIPS REQUIRED FOR EACH TURNBUCKLE.

PRIOR TO SAFETYING, BOTH THREADED TERMINALS SHALL BE SCREWED AN EQUAL DISTANCE INTO THE TURNBUCKLE BODY AND SHALL BE SCREWED IN AT LEAST SO FAR THAT NOT MORE THAN THREE THREADS OF ANY TERMINAL ARE EXPOSED OUTSIDE THE BODY.

AFTER THE TURNBUCKLE HAS BEEN ADJUSTED TO ITS LOCKING POSITION, WITH THE SLOT INDICATOR GROOVE ON TERMINALS AND SLOT INDICATOR NOTCH ON BODY ALIGNED, INSERT THE END OF THE LOCKING CLIP INTO THE TERMINAL AND BODY, AS ILLUSTRATED ABOVE, UNTIL THE U CURVED END OF THE LOCKING CLIP IS OVER THE HOLE IN THE CENTER OF THE BODY. PRESS THE LOCKING CLIP INTO THE HOLE TO ITS FULL EXTENT. THE CURVED END OF THE LOCKING CLIP WILL EXPAND AND LATCH IN THE BODY SLOT. TO CHECK PROPER SETTING OF LOCKING CLIP, ATTEMPT TO REMOVE PRESSED U END FROM BODY HOLE WITH FINGERS ONLY, (DO NOT USE TOOLS AS LOCKING CLIP COULD BECOME PERMANENTLY DISTORTED).

LOCKING CLIPS ARE FOR ONE TIME USE ONLY, AND SHALL NOT BE REUSED.

BOTH LOCKING CLIPS MAY BE INSERTED IN THE SAME HOLE OF THE TURNBUCKLE BODY OR IN OPPOSITE HOLES.

DRAWN	FLANNERY	CLASSIFICATION	STANDARD
CHECKED		TURNBUCKLE ASSY, CLIP LOCKING OF	DS 73
STRESSED			
APPROVED	SCHEIDT		

29 10 P1