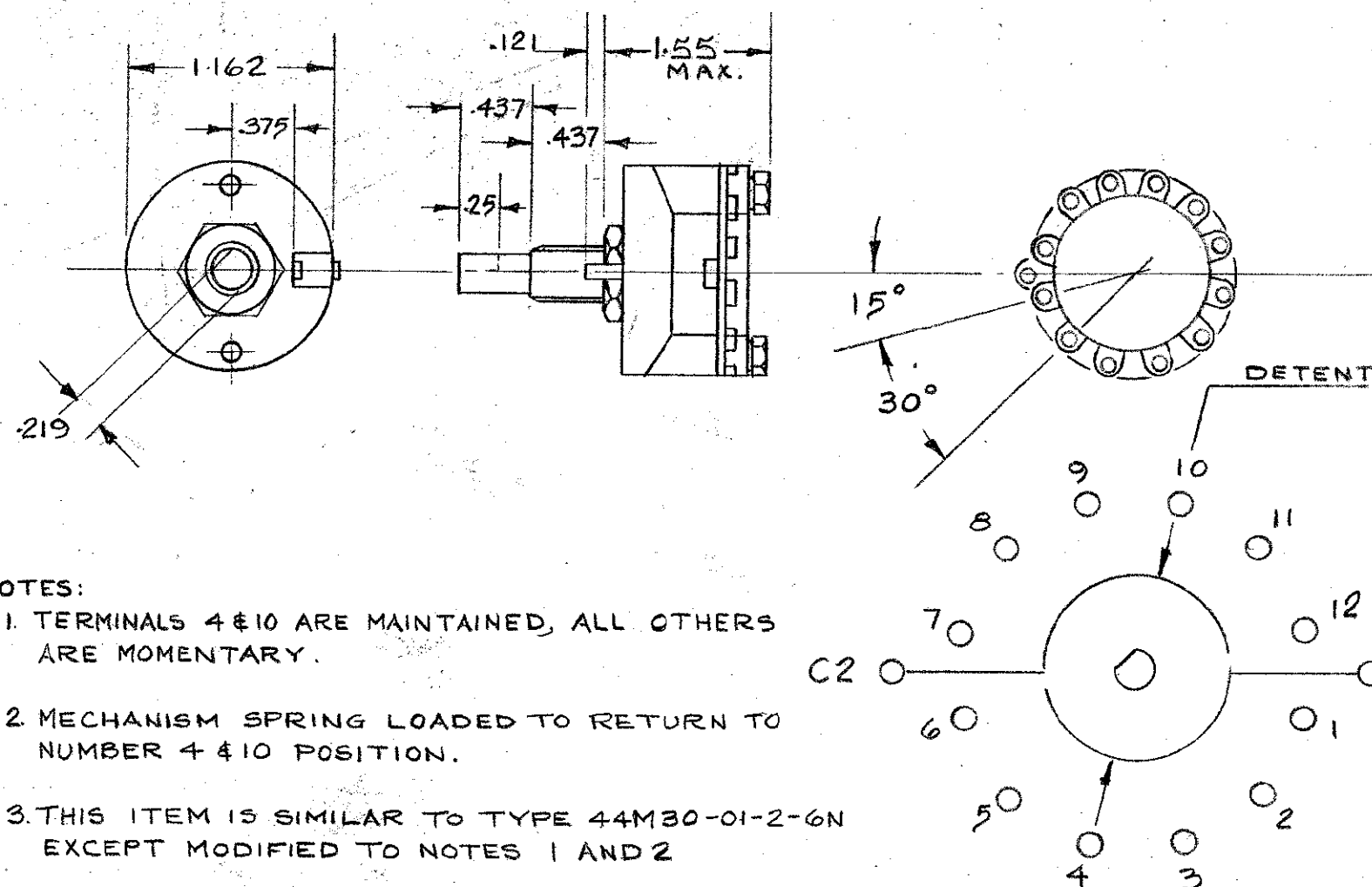


This drawing is private and confidential and is supplied on the express condition that it is not to be used for any purpose or copied or communicated to any other person without the permission of THE DE HAVILLAND AIRCRAFT OF CANADA LIMITED

# REPORT ALL DRAWING ERRORS TO ENGINEERING

## REVISIONS

CHANGE	ITEM NO.	DESCRIPTION	DATE	DRAWN	CHECKED	STRESS	APPROV.
A		BODY DIM 1.55 WAS 1.025.					



### NOTES:

1. TERMINALS 4 & 10 ARE MAINTAINED, ALL OTHERS ARE MOMENTARY.
2. MECHANISM SPRING LOADED TO RETURN TO NUMBER 4 & 10 POSITION.
3. THIS ITEM IS SIMILAR TO TYPE 44M30-01-2-6N EXCEPT MODIFIED TO NOTES 1 AND 2
4. MILITARY QUALIFIED TO MIL-S-3786/4-1
5. WEIGHT 1.7 OZS.

APPROVED VENDOR			
PART No.	VENDOR	VENDOR'S PART No.	CODE IDENT
DSC151-1	GRAYHILL INC. LA GRANGE ILL.	44 MY231575	

DRAWN	KROMKAMP
CHECKED	M. Dolan
STD. M&P	H. Puckering
STRESS	EL53
CH. DRAFT	
DATE	6-6-73

THE DE HAVILLAND AIRCRAFT OF CANADA LIMITED  
DOWNSVIEW ONTARIO

### DRAWING TITLE

ROTARY SWITCH  
LOAD METER SELECTOR

**SOURCE CONTROL DRAWING**

ONLY THE ITEM(S) LISTED ON THIS DRAWING AND IDENTIFIED BY VENDOR'S NAME(S), ADDRESS(ES) AND PART NUMBER(S) HAVE BEEN APPROVED BY THE DE HAVILLAND AIRCRAFT OF CANADA LIMITED FOR THE USE IN DHC AIRCRAFT. A SUBSTITUTE ITEM SHALL NOT BE USED WITHOUT PRIOR APPROVAL BY THE DE HAVILLAND AIRCRAFT OF CANADA LTD.

CODE IDENT NO.	DWG SIZE	DRAWING NO.	RELEASE	REV.
71867		DSC 151		A
SCALE	WGT. CALC	ACTUAL	SHEET	1 of 1