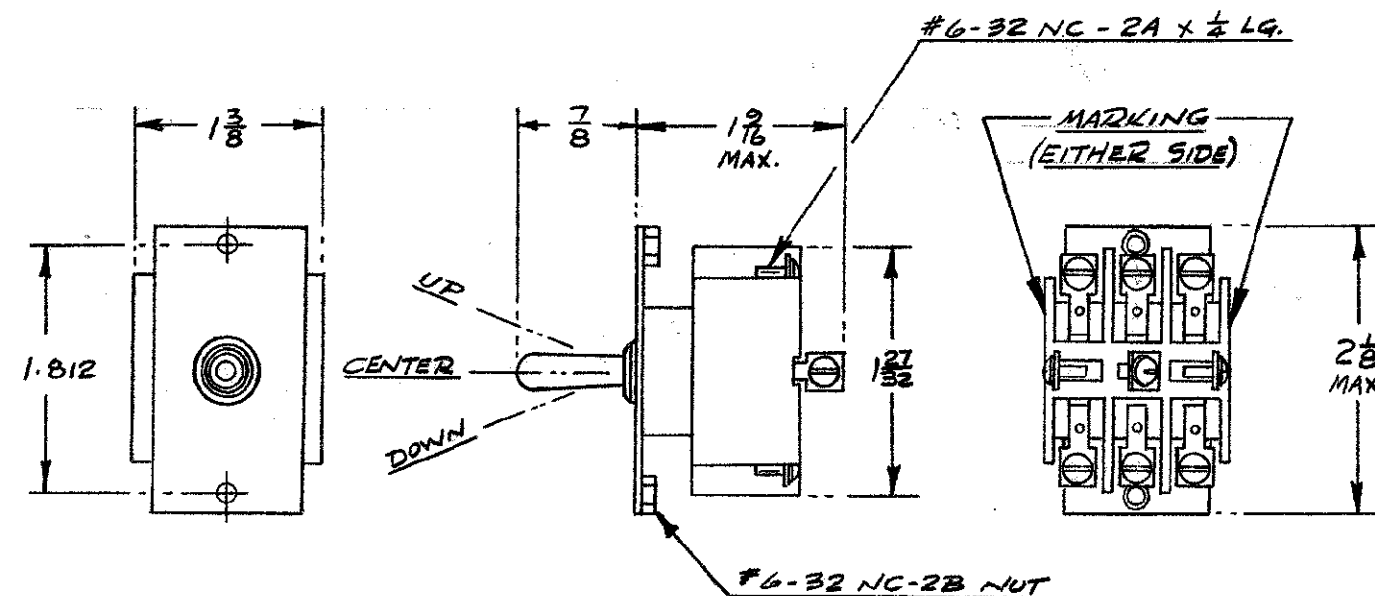


This drawing is private and confidential and is supplied on the express condition that it is not to be used for any purpose or copied or communicated to any other person without the permission of
THE DE HAVILLAND AIRCRAFT OF CANADA LIMITED

REPORT ALL DRAWING ERRORS
TO ENGINEERING

REVISIONS

CHANGE	ITEM NO.	DESCRIPTION	DATE	DRAWN	CHECKED	STRESS	APPROV.
--------	----------	-------------	------	-------	---------	--------	---------



FOR U.S. GOVERNMENT USE ONLY

1. HOLE SIZES FOR RIVETS TO TM55-405-4
2. RIVET LENGTHS TO TM55-405-2
3. FOR PROTECTIVE TREATMENT CODES REFER TO DE HAVILLAND STANDARD DS62

DHC. PART N°	MS PART N°	CIRCUIT WITH TOGGLE LEVER IN		
		UP POSITION	CENTER POSITION	DOWN POSITION
DSC16-21	MS25105-21	ON	OFF	ON
DSC16-23	MS25105-23	ON	NONE	ON
DSC16-24	MS25105-24	ON	OFF	NONE

NOTES:-

1. MS25105 SUPERSEDES AN 3226
2. ACCEPTABLE VENDORS ARE
HONEYWELL CONTROLS - TORONTO
CUTLER HAMMER - CANADA LTD.
MICRO SWITCH - FREEPORT - ILLINOIS - 74059
CUTLER HAMMER - MILWAUKEE - WISCONSIN - 15605

SOURCE CONTROL DRAWING

ONLY THE ITEM(S) LISTED ON THIS DRAWING AND IDENTIFIED BY VENDOR'S NAME(S), ADDRESS(ES) AND PART NUMBER(S) HAVE BEEN APPROVED BY THE DE HAVILLAND AIRCRAFT OF CANADA LIMITED FOR THE USE IN DHC AIRCRAFT. A SUBSTITUTE ITEM SHALL NOT BE USED WITHOUT PRIOR APPROVAL BY THE DE HAVILLAND AIRCRAFT OF CANADA LTD.

MOD NO.		THE DE HAVILLAND AIRCRAFT OF CANADA LIMITED DOWNSVIEW ONTARIO				
DRAWN	N. LYNN	DRAWING TITLE <u>SWITCHES</u> <u>TOGGLE</u> <u>THREE POLE</u> <u>THREE HOLE MOUNTING</u>				
CHECKED	J.J. GILMOUR					
APPROVED	[Signature]					
STRESS	[Signature]					
		CODE IDENT NO.	DWG SIZE	DRAWING NO.	RELEASE	REV.
		71867	B	DSC16	X	
		SCALE N.T.S.	WGT. CALC	ACTUAL	SHEET	