

THE INFORMATION, TECHNICAL DATA AND DESIGNS DISCLOSED IN THIS DOCUMENT (THE "INFORMATION") ARE EITHER THE EXCLUSIVE PROPERTY OF DE HAVILLAND INC., OR ARE SUBJECT TO PROPRIETARY RIGHTS OF OTHERS. THE INFORMATION IS NOT TO BE USED FOR DESIGN OR MANUFACTURE, OR DISCLOSED TO OTHERS WITHOUT THE EXPRESS PRIOR WRITTEN CONSENT OF DE HAVILLAND INC. THE HOLDER OF THIS DOCUMENT, BY ITS RETENTION AND USE, AGREES TO HOLD THE INFORMATION IN CONFIDENCE. THESE RESTRICTIONS DO NOT APPLY TO PERSONS HAVING PROPRIETARY RIGHTS IN THE INFORMATION, TO THE EXTENT OF THOSE RIGHTS.

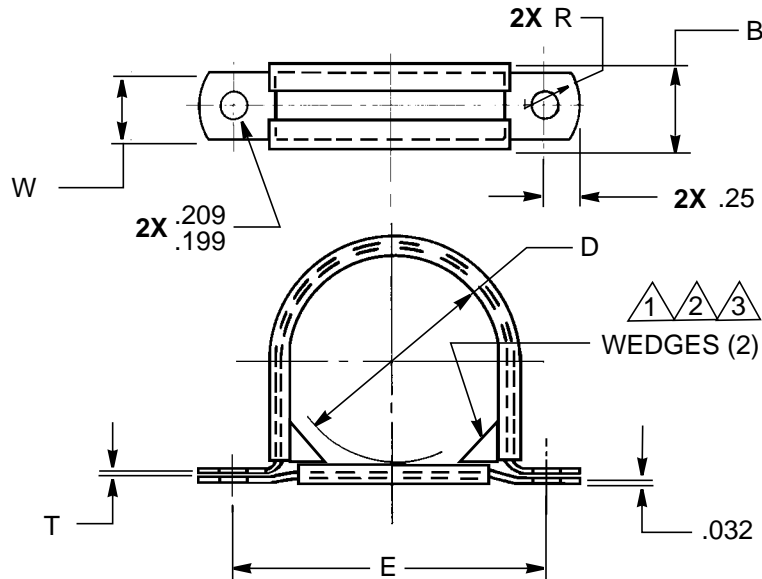
de HAVILLAND

CAGE CODE 71867

SOURCE CONTROL DRAWING

ONLY THE ITEM(S) LISTED ON THIS DRAWING AND IDENTIFIED BY VENDOR'S NAME(S), ADDRESS(ES) AND PART NUMBER(S) HAVE BEEN APPROVED BY DE HAVILLAND INC. FOR USE IN DHI AIRCRAFT. A SUBSTITUTE ITEM SHALL NOT BE USED WITHOUT PRIOR APPROVAL BY DE HAVILLAND INC.

SOURCE CONTROL DRAWING



TOLERANCES: UNLESS OTHERWISE NOTED - DEC. XX = $\pm .030$, XXX = $\pm .010$

PART NUMBER	‘D’ DIA	‘E’	‘B’ ± .02	‘T’	Ⓚ ‘R’ REF	‘W’ ± .03
DSC162()06	.38	1.25	.62	.030	.38	.50
DSC162()08	.50	1.37				
DSC162()09	.56	1.45				
DSC162()10	.62	1.53				
DSC162()12	.75	1.66				
DSC162()14	.88	1.79				
DSC162()16	1.00	1.91		.40		
DSC162()18	1.12	2.06				
DSC162()20	1.25	2.19				
DSC162()21	1.31	2.25				
DSC162()22	1.38	2.32				

LIST OF CURRENT SHEETS

PAGE	1	2	3	4	5						
REVISION	L	D	A	A	-						

SEE ENGINEERING STANDARDS APPROVAL RECORD FOR ORIGINAL SIGNATURES AND CHANGE SUMMARY

DRAWN	R. KROMKAMP	TITLE: CLAMP, 'U' TYPE, CUSHION, WEDGE, WITH BASE BAR	DSC 162 PAGE 1 OF 5
CHECKED	D. LINTS		
STRESS	M. ELLIOTT		
APPROVED	S. SCHRATTNER		

Ⓚ SHT 2 WAS REV C

APPROVED: 05 MAR 74 REV. F - 23 APR 84 REV. G - 23 MAR 87 REV. H - 10 SEP 97 REV. J - 14 JUL 00 REV. K - 31 AUG 00 REV. L - 13 SEP 00

THE INFORMATION, TECHNICAL DATA AND DESIGNS DISCLOSED IN THIS DOCUMENT (THE "INFORMATION") ARE EITHER THE EXCLUSIVE PROPERTY OF DE HAVILLAND INC., OR ARE SUBJECT TO PROPRIETARY RIGHTS OF OTHERS. THE INFORMATION IS NOT TO BE USED FOR DESIGN OR MANUFACTURE, OR DISCLOSED TO OTHERS WITHOUT THE EXPRESS PRIOR WRITTEN CONSENT OF DE HAVILLAND INC. THE HOLDER OF THIS DOCUMENT, BY ITS RETENTION AND USE, AGREES TO HOLD THE INFORMATION IN CONFIDENCE. THESE RESTRICTIONS DO NOT APPLY TO PERSONS HAVING PROPRIETARY RIGHTS IN THE INFORMATION, TO THE EXTENT OF THOSE RIGHTS.

de HAVILLAND

CAGE CODE 71867

SOURCE CONTROL DRAWING

ONLY THE ITEM(S) LISTED ON THIS DRAWING AND IDENTIFIED BY VENDOR'S NAME(S), ADDRESS(ES) AND PART NUMBER(S) HAVE BEEN APPROVED BY DE HAVILLAND INC. FOR USE IN DHI AIRCRAFT. A SUBSTITUTE ITEM SHALL NOT BE USED WITHOUT PRIOR APPROVAL BY DE HAVILLAND INC.

SOURCE CONTROL DRAWING

PART NUMBER	‘D’ DIA	‘E’	‘B’ ± .02	‘T’	‘R’ REF	‘W’ ± .03
DSC162()24	1.50	2.44	.62	.40	.38	.50
DSC162()26	1.62	2.56				
DSC162()28	1.75	2.69				
DSC162()30	1.88	2.82				
DSC162()32	2.00	2.94				
DSC162()34	2.12	3.06	.75	.50	.50	.62
DSC162()36	2.25	3.31				
DSC162()40	2.50	3.56				
DSC162()44	2.75	3.81				
DSC162()48	3.00	4.06				
DSC162()52	3.25	4.31				
DSC162()54	3.38	4.44				
DSC162()56	3.50	4.56				
DSC162()64	4.00	5.06		.60		
DSC162()68	4.25	5.31				
DSC162()72	4.50	5.56				
DSC162()80	5.00	6.06				
DSC162()88	5.50	6.56				
DSC162()96	6.00	7.06				

ENGINEERING NOTES:

- 1 WEDGES SHALL BE INTEGRALLY MOLDED TO CUSHION OR VULCANIZED USING PRESSURE AND HEAT TO ACCOMPLISH A BOND BETWEEN CUSHION AND WEDGE.
- 2 WEDGES MAY BE OPTIONALLY LOCATED ON THE SADDLE CUSHION OR THE BASE BAR CUSHION.
- 3 WEDGES SHALL OVERLAP AND TOUCH OPPOSITE CUSHION WHEN CLAMP MOUNTING HOLES ARE ALIGNED AND CLAMP IS COMPLETELY CLOSED.
- 4 PROCUREMENT SHALL SPECIFY THE DSC PART NUMBER AND MANUFACTURER'S PART NUMBER ON THE PURCHASE ORDER.
- 5 CLAMP MATERIAL:
ALUMINUM ALLOY 2024-T4, T42, CLAD (QQ-A-250/5) -65°F TO + 250°F
CRES TYPE 301 or 302 or 321 ANNEALED -100°F TO + 500°F

SEE ENGINEERING STANDARDS APPROVAL RECORD FOR ORIGINAL SIGNATURES AND CHANGE SUMMARY

DRAWN	R. KROMKAMP	TITLE: CLAMP, 'U' TYPE, CUSHION, WEDGE, WITH BASE BAR	DSC 162 PAGE 2 OF 5
CHECKED	D. LINTS		
STRESS	M. ELLIOTT		
APPROVED	S. SCHRATTNER		

D NOTE 5 - CRES TYPE 302 AND 321 ADDED

APPROVED: 23 MAR 87 REV: A - 10 SEP 97 REV: B - 14 JUL 00 REV: C - 31 AUG 00 REV: D - 13 SEP 00

THE INFORMATION, TECHNICAL DATA AND DESIGNS DISCLOSED IN THIS DOCUMENT (THE "INFORMATION") ARE EITHER THE EXCLUSIVE PROPERTY OF DE HAVILLAND INC., OR ARE SUBJECT TO PROPRIETARY RIGHTS OF OTHERS. THE INFORMATION IS NOT TO BE USED FOR DESIGN OR MANUFACTURE, OR DISCLOSED TO OTHERS WITHOUT THE EXPRESS PRIOR WRITTEN CONSENT OF DE HAVILLAND INC. THE HOLDER OF THIS DOCUMENT, BY ITS RETENTION AND USE, AGREES TO HOLD THE INFORMATION IN CONFIDENCE. THESE RESTRICTIONS DO NOT APPLY TO PERSONS HAVING PROPRIETARY RIGHTS IN THE INFORMATION, TO THE EXTENT OF THOSE RIGHTS.

de HAVILLAND

CAGE CODE 71867

SOURCE CONTROL DRAWING

ONLY THE ITEM(S) LISTED ON THIS DRAWING AND IDENTIFIED BY VENDOR'S NAME(S), ADDRESS(ES) AND PART NUMBER(S) HAVE BEEN APPROVED BY DE HAVILLAND INC. FOR USE IN DHI AIRCRAFT. A SUBSTITUTE ITEM SHALL NOT BE USED WITHOUT PRIOR APPROVAL BY DE HAVILLAND INC.

SOURCE CONTROL DRAWING

6 CUSHION MATERIAL:

CUSHION MATERIAL	APPLICATION	OPERATING TEMP	DH CODE	MFGR CODE			
				TA MFG	J and M	ADEL	(A) STAR
SILICONE RUBBER FABRIC (PINK/RED)	HIGH-TEMP	(A) -100°F to +500°F	()	HB	FH	SF	HTW
BUNA-N NITRILE (YELLOW)	GENERAL, FUEL	-65°F to +300°F	-1	NB	YN	NB	NB
ETHYLENE PROPYLENE (PURPLE)	HYDRAULIC FLUID	-65°F to +250°F	-2	EP	PE	EP	EP

PART NUMBER BREAKDOWN

ADEL = 10805 - 32 NB

TA = TA12C60W - 32 NB

CUSHION MATERIAL - SEE TABLE FOR MFGR CODE
SIZE (DIA in 1/16th in)
CLAMP MATERIAL
- = ALUMINUM ALLOY
SS = CRES
BASIC P/N

J and M = JM44SC25W D 32 YN

CUSHION MATERIAL - SEE TABLE FOR MFGR CODE
SIZE (DIA in 1/16th in)
CLAMP MATERIAL
D = ALUMINUM ALLOY
H = CRES
BASIC P/N

(A) STAR = 50154- D -32 NB

CUSHION MATERIAL - SEE TABLE FOR MFGR CODE
SIZE (DIA in 1/16th in)
CLAMP MATERIAL
D = ALUMINUM ALLOY
H = CRES
BASIC P/N

DSC162 - 32 -1

CUSHION MATERIAL
() NO CODE = SILICONE RUBBER
-1 = BUNA-N NITRILE RUBBER
-2 = ETHYLENE PROPYLENE RUBBER (E.P.R.)

SIZE (DIA in 1/16th in) FROM TABLE

CLAMP MATERIAL
- = ALUMINUM ALLOY
SS = CRES

BASIC PART NUMBER

SEE ENGINEERING STANDARDS APPROVAL RECORD FOR ORIGINAL SIGNATURES AND CHANGE SUMMARY

DRAWN	B. McDONALD	TITLE: CLAMP, 'U' TYPE, CUSHION, WEDGE, WITH BASE BAR	DSC 162 PAGE 3 OF 5
CHECKED	P. LAM		
STRESS	N/A		
APPROVED	S. HAMID		

(A) STAR TECHNOLOGIES ADDED TO APPROVED VENDORS LIST
MAX OPERATING TEMP FOR SILICONE RUBBER CUSHION +500°F WAS +600°F

APPROVED: 10 SEP 97 REV: A - 14 JUL 00

THE INFORMATION, TECHNICAL DATA AND DESIGNS DISCLOSED IN THIS DOCUMENT (THE "INFORMATION") ARE EITHER THE EXCLUSIVE PROPERTY OF DE HAVILLAND INC., OR ARE SUBJECT TO PROPRIETARY RIGHTS OF OTHERS. THE INFORMATION IS NOT TO BE USED FOR DESIGN OR MANUFACTURE, OR DISCLOSED TO OTHERS WITHOUT THE EXPRESS PRIOR WRITTEN CONSENT OF DE HAVILLAND INC. THE HOLDER OF THIS DOCUMENT, BY ITS RETENTION AND USE, AGREES TO HOLD THE INFORMATION IN CONFIDENCE. THESE RESTRICTIONS DO NOT APPLY TO PERSONS HAVING PROPRIETARY RIGHTS IN THE INFORMATION, TO THE EXTENT OF THOSE RIGHTS.

de HAVILLAND

CAGE CODE 71867

SOURCE CONTROL DRAWING

ONLY THE ITEM(S) LISTED ON THIS DRAWING AND IDENTIFIED BY VENDOR'S NAME(S), ADDRESS(ES) AND PART NUMBER(S) HAVE BEEN APPROVED BY DE HAVILLAND INC. FOR USE IN DHI AIRCRAFT. A SUBSTITUTE ITEM SHALL NOT BE USED WITHOUT PRIOR APPROVAL BY DE HAVILLAND INC.

SOURCE CONTROL DRAWING

PART NUMBER	APPROVED VENDORS			
	TA MFG	J and M PROD	ADEL	Ⓐ STAR TECH
DSC162()06	TA12C60W()06()01	JM44SC25W()06()	10805()06()	50154-()-06()
DSC162()08	TA12C60W()08()01	JM44SC25W()08()	10805()08()	50154-()-08()
DSC162()09	TA12C60W()09()01	JM44SC25W()09()	10805()09()	50154-()-09()
DSC162()10	TA12C60W()10()01	JM44SC25W()10()	10805()10()	50154-()-10()
DSC162()12	TA12C60W()12()01	JM44SC25W()12()	10805()12()	50154-()-12()
DSC162()14	TA12C60W()14()01	JM44SC25W()14()	10805()14()	50154-()-14()
DSC162()16	TA12C60W()16()01	JM44SC25W()16()	10805()16()	50154-()-16()
DSC162()18	TA12C60W()18()	JM44SC25W()18()	10805()18()	50154-()-18()
DSC162()20	TA12C60W()20()	JM44SC25W()20()	10805()20()	50154-()-20()
DSC162()21	TA12C60W()21()	JM44SC25W()21()	10805()21()	50154-()-21()
DSC162()22	TA12C60W()22()	JM44SC25W()22()	10805()22()	50154-()-22()
DSC162()24	TA12C60W()24()	JM44SC25W()24()	10805()24()	50154-()-24()
DSC162()26	TA12C60W()26()	JM44SC25W()26()	10805()26()	50154-()-26()
DSC162()28	TA12C60W()28()	JM44SC25W()28()	10805()28()	50154-()-28()
DSC162()30	TA12C60W()30()	JM44SC25W()30()	10805()30()	50154-()-30()
DSC162()32	TA12C60W()32()	JM44SC25W()32()	10805()32()	50154-()-32()
DSC162()34	TA12C60W()34()		10805()34()	
DSC162()36	TA12C60W()36()		10805()36()	
DSC162()40	TA12C60W()40()		10805()40()	
DSC162()44	TA12C60W()44()		10805()44()	
DSC162()48	TA12C60W()48()		10805()48()	
DSC162()52	TA12C60W()52()		10805()52()	
DSC162()54	TA12C60W()54()		10805()54()	
DSC162()56	TA12C60W()56()		10805()56()	
DSC162()64	TA12C60W()64()		10805()64()	
DSC162()68	TA12C60W()68()		10805()68()	
DSC162()72	TA12C60W()72()		10805()72()	
DSC162()80	TA12C60W()80()		10805()80()	
DSC162()88	TA12C60W()88()		10805()88()	
DSC162()96	TA12C60W()96()		10805()96()	

SEE ENGINEERING STANDARDS APPROVAL RECORD FOR ORIGINAL SIGNATURES AND CHANGE SUMMARY

DRAWN	B. McDONALD	TITLE: CLAMP, 'U' TYPE, CUSHION, WEDGE, WITH BASE BAR	DSC 162 PAGE 4 OF 5
CHECKED	P. LAM		
STRESS	N/A		
APPROVED	S. HAMI		

Ⓐ STAR PART NUMBERS ADDED

APPROVED: 10 SEP 97 REV: A - 14 JUL 00

THE INFORMATION, TECHNICAL DATA AND DESIGNS DISCLOSED IN THIS DOCUMENT (THE "INFORMATION") ARE EITHER THE EXCLUSIVE PROPERTY OF DE HAVILLAND INC., OR ARE SUBJECT TO PROPRIETARY RIGHTS OF OTHERS. THE INFORMATION IS NOT TO BE USED FOR DESIGN OR MANUFACTURE, OR DISCLOSED TO OTHERS WITHOUT THE EXPRESS PRIOR WRITTEN CONSENT OF DE HAVILLAND INC. THE HOLDER OF THIS DOCUMENT, BY ITS RETENTION AND USE, AGREES TO HOLD THE INFORMATION IN CONFIDENCE. THESE RESTRICTIONS DO NOT APPLY TO PERSONS HAVING PROPRIETARY RIGHTS IN THE INFORMATION, TO THE EXTENT OF THOSE RIGHTS.

de HAVILLAND

CAGE CODE 71867

SOURCE CONTROL DRAWING

ONLY THE ITEM(S) LISTED ON THIS DRAWING AND IDENTIFIED BY VENDOR'S NAME(S), ADDRESS(ES) AND PART NUMBER(S) HAVE BEEN APPROVED BY DE HAVILLAND INC. FOR USE IN DHI AIRCRAFT. A SUBSTITUTE ITEM SHALL NOT BE USED WITHOUT PRIOR APPROVAL BY DE HAVILLAND INC.

SOURCE CONTROL DRAWING

APPROVED VENDORS ADDRESSES AND CAGE CODES

ADEL FASTENERS - DIVISION OF TRANSDIGM INC

LOS ANGELES, CA, USA - CAGE CODE 83930

J and M PRODUCTS INC

BURBANK, CA, USA - CAGE CODE 22175

STAR TECHNOLOGIES INC

HUNTINGTON, WV, USA - CAGE CODE 02WC8

TA MFG CORP

GLENDALE, CA, USA - CAGE CODE 4L996

SEE ENGINEERING STANDARDS APPROVAL RECORD FOR ORIGINAL SIGNATURES AND CHANGE SUMMARY

DRAWN		TITLE: CLAMP, 'U' TYPE, CUSHION, WEDGE, WITH BASE BAR	DSC 162 PAGE 5 OF 5
CHECKED			
STRESS			
APPROVED			

APPROVED: 14 JUL 2000

THE INFORMATION, TECHNICAL DATA AND DESIGNS DISCLOSED IN THIS DOCUMENT (THE "INFORMATION") ARE EITHER THE EXCLUSIVE PROPERTY OF DE HAVILLAND INC., OR ARE SUBJECT TO PROPRIETARY RIGHTS OF OTHERS. THE INFORMATION IS NOT TO BE USED FOR DESIGN OR MANUFACTURE, OR DISCLOSED TO OTHERS WITHOUT THE EXPRESS PRIOR WRITTEN CONSENT OF DE HAVILLAND INC. THE HOLDER OF THIS DOCUMENT, BY ITS RETENTION AND USE, AGREES TO HOLD THE INFORMATION IN CONFIDENCE. THESE RESTRICTIONS DO NOT APPLY TO PERSONS HAVING PROPRIETARY RIGHTS IN THE INFORMATION, TO THE EXTENT OF THOSE RIGHTS.

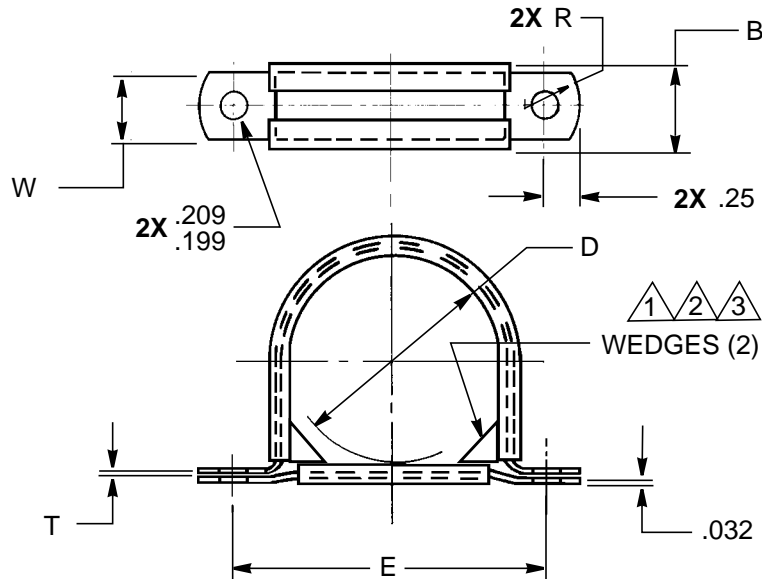
de HAVILLAND

CAGE CODE 71867

SOURCE CONTROL DRAWING

ONLY THE ITEM(S) LISTED ON THIS DRAWING AND IDENTIFIED BY VENDOR'S NAME(S), ADDRESS(ES) AND PART NUMBER(S) HAVE BEEN APPROVED BY DE HAVILLAND INC. FOR USE IN DHI AIRCRAFT. A SUBSTITUTE ITEM SHALL NOT BE USED WITHOUT PRIOR APPROVAL BY DE HAVILLAND INC.

SOURCE CONTROL DRAWING



TOLERANCES: UNLESS OTHERWISE NOTED - DEC. XX = $\pm .030$, XXX = $\pm .010$

PART NUMBER	‘D’ DIA	‘E’	‘B’ ± .02	‘T’	Ⓚ ‘R’ REF	‘W’ ± .03
DSC162()06	.38	1.25	.62	.030	.38	.50
DSC162()08	.50	1.37				
DSC162()09	.56	1.45				
DSC162()10	.62	1.53				
DSC162()12	.75	1.66				
DSC162()14	.88	1.79				
DSC162()16	1.00	1.91				
DSC162()18	1.12	2.06		.40		
DSC162()20	1.25	2.19				
DSC162()21	1.31	2.25				
DSC162()22	1.38	2.32				

LIST OF CURRENT SHEETS

PAGE	1	2	3	4	5						
REVISION	L	D	A	A	-						

SEE ENGINEERING STANDARDS APPROVAL RECORD FOR ORIGINAL SIGNATURES AND CHANGE SUMMARY

DRAWN	R. KROMKAMP	TITLE: CLAMP, 'U' TYPE, CUSHION, WEDGE, WITH BASE BAR	DSC 162 PAGE 1 OF 5
CHECKED	D. LINTS		
STRESS	M. ELLIOTT		
APPROVED	S. SCHRATTNER		

Ⓚ SHT 2 WAS REV C

APPROVED: 05 MAR 74 REV. F - 23 APR 84 REV. G - 23 MAR 87 REV. H - 10 SEP 97 REV. J - 14 JUL 00 REV. K - 31 AUG 00 REV. L - 13 SEP 00

THE INFORMATION, TECHNICAL DATA AND DESIGNS DISCLOSED IN THIS DOCUMENT (THE "INFORMATION") ARE EITHER THE EXCLUSIVE PROPERTY OF DE HAVILLAND INC., OR ARE SUBJECT TO PROPRIETARY RIGHTS OF OTHERS. THE INFORMATION IS NOT TO BE USED FOR DESIGN OR MANUFACTURE, OR DISCLOSED TO OTHERS WITHOUT THE EXPRESS PRIOR WRITTEN CONSENT OF DE HAVILLAND INC. THE HOLDER OF THIS DOCUMENT, BY ITS RETENTION AND USE, AGREES TO HOLD THE INFORMATION IN CONFIDENCE. THESE RESTRICTIONS DO NOT APPLY TO PERSONS HAVING PROPRIETARY RIGHTS IN THE INFORMATION, TO THE EXTENT OF THOSE RIGHTS.

de HAVILLAND

CAGE CODE 71867

SOURCE CONTROL DRAWING

ONLY THE ITEM(S) LISTED ON THIS DRAWING AND IDENTIFIED BY VENDOR'S NAME(S), ADDRESS(ES) AND PART NUMBER(S) HAVE BEEN APPROVED BY DE HAVILLAND INC. FOR USE IN DHI AIRCRAFT. A SUBSTITUTE ITEM SHALL NOT BE USED WITHOUT PRIOR APPROVAL BY DE HAVILLAND INC.

SOURCE CONTROL DRAWING

PART NUMBER	‘D’ DIA	‘E’	‘B’ ± .02	‘T’	‘R’ REF	‘W’ ± .03
DSC162()24	1.50	2.44	.62	.40	.38	.50
DSC162()26	1.62	2.56				
DSC162()28	1.75	2.69				
DSC162()30	1.88	2.82				
DSC162()32	2.00	2.94				
DSC162()34	2.12	3.06	.75	.50	.50	.62
DSC162()36	2.25	3.31				
DSC162()40	2.50	3.56				
DSC162()44	2.75	3.81				
DSC162()48	3.00	4.06				
DSC162()52	3.25	4.31				
DSC162()54	3.38	4.44				
DSC162()56	3.50	4.56				
DSC162()64	4.00	5.06		.60		
DSC162()68	4.25	5.31				
DSC162()72	4.50	5.56				
DSC162()80	5.00	6.06				
DSC162()88	5.50	6.56				
DSC162()96	6.00	7.06				

ENGINEERING NOTES:

- 1 WEDGES SHALL BE INTEGRALLY MOLDED TO CUSHION OR VULCANIZED USING PRESSURE AND HEAT TO ACCOMPLISH A BOND BETWEEN CUSHION AND WEDGE.
- 2 WEDGES MAY BE OPTIONALLY LOCATED ON THE SADDLE CUSHION OR THE BASE BAR CUSHION.
- 3 WEDGES SHALL OVERLAP AND TOUCH OPPOSITE CUSHION WHEN CLAMP MOUNTING HOLES ARE ALIGNED AND CLAMP IS COMPLETELY CLOSED.
- 4 PROCUREMENT SHALL SPECIFY THE DSC PART NUMBER AND MANUFACTURER'S PART NUMBER ON THE PURCHASE ORDER.
- 5 CLAMP MATERIAL:
ALUMINUM ALLOY 2024-T4, T42, CLAD (QQ-A-250/5) -65°F TO + 250°F
CRES TYPE 301 or 302 or 321 ANNEALED -100°F TO + 500°F

SEE ENGINEERING STANDARDS APPROVAL RECORD FOR ORIGINAL SIGNATURES AND CHANGE SUMMARY

DRAWN	R. KROMKAMP	TITLE: CLAMP, 'U' TYPE, CUSHION, WEDGE, WITH BASE BAR	DSC 162 PAGE 2 OF 5
CHECKED	D. LINTS		
STRESS	M. ELLIOTT		
APPROVED	S. SCHRATTNER		

D NOTE 5 - CRES TYPE 302 AND 321 ADDED

APPROVED: 23 MAR 87 REV: A - 10 SEP 97 REV: B - 14 JUL 00 REV: C - 31 AUG 00 REV: D - 13 SEP 00

THE INFORMATION, TECHNICAL DATA AND DESIGNS DISCLOSED IN THIS DOCUMENT (THE "INFORMATION") ARE EITHER THE EXCLUSIVE PROPERTY OF DE HAVILLAND INC., OR ARE SUBJECT TO PROPRIETARY RIGHTS OF OTHERS. THE INFORMATION IS NOT TO BE USED FOR DESIGN OR MANUFACTURE, OR DISCLOSED TO OTHERS WITHOUT THE EXPRESS PRIOR WRITTEN CONSENT OF DE HAVILLAND INC. THE HOLDER OF THIS DOCUMENT, BY ITS RETENTION AND USE, AGREES TO HOLD THE INFORMATION IN CONFIDENCE. THESE RESTRICTIONS DO NOT APPLY TO PERSONS HAVING PROPRIETARY RIGHTS IN THE INFORMATION, TO THE EXTENT OF THOSE RIGHTS.

de HAVILLAND

CAGE CODE 71867

SOURCE CONTROL DRAWING

ONLY THE ITEM(S) LISTED ON THIS DRAWING AND IDENTIFIED BY VENDOR'S NAME(S), ADDRESS(ES) AND PART NUMBER(S) HAVE BEEN APPROVED BY DE HAVILLAND INC. FOR USE IN DHI AIRCRAFT. A SUBSTITUTE ITEM SHALL NOT BE USED WITHOUT PRIOR APPROVAL BY DE HAVILLAND INC.

SOURCE CONTROL DRAWING

6 CUSHION MATERIAL:

CUSHION MATERIAL	APPLICATION	OPERATING TEMP	DH CODE	MFGR CODE			
				TA MFG	J and M	ADEL	(A) STAR
SILICONE RUBBER FABRIC (PINK/RED)	HIGH-TEMP	-100°F to (A) +500°F	()	HB	FH	SF	HTW
BUNA-N NITRILE (YELLOW)	GENERAL, FUEL	-65°F to +300°F	-1	NB	YN	NB	NB
ETHYLENE PROPYLENE (PURPLE)	HYDRAULIC FLUID	-65°F to +250°F	-2	EP	PE	EP	EP

PART NUMBER BREAKDOWN

ADEL = 10805 - 32 NB

TA = TA12C60W - 32 NB

CUSHION MATERIAL - SEE TABLE FOR MFGR CODE
SIZE (DIA in 1/16th in)
CLAMP MATERIAL
- = ALUMINUM ALLOY
SS = CRES
BASIC P/N

J and M = JM44SC25W D 32 YN

CUSHION MATERIAL - SEE TABLE FOR MFGR CODE
SIZE (DIA in 1/16th in)
CLAMP MATERIAL
D = ALUMINUM ALLOY
H = CRES
BASIC P/N

(A) STAR = 50154- D -32 NB

CUSHION MATERIAL - SEE TABLE FOR MFGR CODE
SIZE (DIA in 1/16th in)
CLAMP MATERIAL
D = ALUMINUM ALLOY
H = CRES
BASIC P/N

DSC162 - 32 -1

CUSHION MATERIAL
() NO CODE = SILICONE RUBBER
-1 = BUNA-N NITRILE RUBBER
-2 = ETHYLENE PROPYLENE RUBBER (E.P.R.)

SIZE (DIA in 1/16th in) FROM TABLE

CLAMP MATERIAL
- = ALUMINUM ALLOY
SS = CRES

BASIC PART NUMBER

SEE ENGINEERING STANDARDS APPROVAL RECORD FOR ORIGINAL SIGNATURES AND CHANGE SUMMARY

DRAWN	B. McDONALD	TITLE: CLAMP, 'U' TYPE, CUSHION, WEDGE, WITH BASE BAR	DSC 162 PAGE 3 OF 5
CHECKED	P. LAM		
STRESS	N/A		
APPROVED	S. HAMID		

(A) STAR TECHNOLOGIES ADDED TO APPROVED VENDORS LIST
MAX OPERATING TEMP FOR SILICONE RUBBER CUSHION +500°F WAS +600°F

APPROVED: 10 SEP 97 REV: A - 14 JUL 00

THE INFORMATION, TECHNICAL DATA AND DESIGNS DISCLOSED IN THIS DOCUMENT (THE "INFORMATION") ARE EITHER THE EXCLUSIVE PROPERTY OF DE HAVILLAND INC., OR ARE SUBJECT TO PROPRIETARY RIGHTS OF OTHERS. THE INFORMATION IS NOT TO BE USED FOR DESIGN OR MANUFACTURE, OR DISCLOSED TO OTHERS WITHOUT THE EXPRESS PRIOR WRITTEN CONSENT OF DE HAVILLAND INC. THE HOLDER OF THIS DOCUMENT, BY ITS RETENTION AND USE, AGREES TO HOLD THE INFORMATION IN CONFIDENCE. THESE RESTRICTIONS DO NOT APPLY TO PERSONS HAVING PROPRIETARY RIGHTS IN THE INFORMATION, TO THE EXTENT OF THOSE RIGHTS.

de HAVILLAND

CAGE CODE 71867

SOURCE CONTROL DRAWING

ONLY THE ITEM(S) LISTED ON THIS DRAWING AND IDENTIFIED BY VENDOR'S NAME(S), ADDRESS(ES) AND PART NUMBER(S) HAVE BEEN APPROVED BY DE HAVILLAND INC. FOR USE IN DHI AIRCRAFT. A SUBSTITUTE ITEM SHALL NOT BE USED WITHOUT PRIOR APPROVAL BY DE HAVILLAND INC.

SOURCE CONTROL DRAWING

PART NUMBER	APPROVED VENDORS			
	TA MFG	J and M PROD	ADEL	Ⓐ STAR TECH
DSC162()06	TA12C60W()06()01	JM44SC25W()06()	10805()06()	50154-()-06()
DSC162()08	TA12C60W()08()01	JM44SC25W()08()	10805()08()	50154-()-08()
DSC162()09	TA12C60W()09()01	JM44SC25W()09()	10805()09()	50154-()-09()
DSC162()10	TA12C60W()10()01	JM44SC25W()10()	10805()10()	50154-()-10()
DSC162()12	TA12C60W()12()01	JM44SC25W()12()	10805()12()	50154-()-12()
DSC162()14	TA12C60W()14()01	JM44SC25W()14()	10805()14()	50154-()-14()
DSC162()16	TA12C60W()16()01	JM44SC25W()16()	10805()16()	50154-()-16()
DSC162()18	TA12C60W()18()	JM44SC25W()18()	10805()18()	50154-()-18()
DSC162()20	TA12C60W()20()	JM44SC25W()20()	10805()20()	50154-()-20()
DSC162()21	TA12C60W()21()	JM44SC25W()21()	10805()21()	50154-()-21()
DSC162()22	TA12C60W()22()	JM44SC25W()22()	10805()22()	50154-()-22()
DSC162()24	TA12C60W()24()	JM44SC25W()24()	10805()24()	50154-()-24()
DSC162()26	TA12C60W()26()	JM44SC25W()26()	10805()26()	50154-()-26()
DSC162()28	TA12C60W()28()	JM44SC25W()28()	10805()28()	50154-()-28()
DSC162()30	TA12C60W()30()	JM44SC25W()30()	10805()30()	50154-()-30()
DSC162()32	TA12C60W()32()	JM44SC25W()32()	10805()32()	50154-()-32()
DSC162()34	TA12C60W()34()		10805()34()	
DSC162()36	TA12C60W()36()		10805()36()	
DSC162()40	TA12C60W()40()		10805()40()	
DSC162()44	TA12C60W()44()		10805()44()	
DSC162()48	TA12C60W()48()		10805()48()	
DSC162()52	TA12C60W()52()		10805()52()	
DSC162()54	TA12C60W()54()		10805()54()	
DSC162()56	TA12C60W()56()		10805()56()	
DSC162()64	TA12C60W()64()		10805()64()	
DSC162()68	TA12C60W()68()		10805()68()	
DSC162()72	TA12C60W()72()		10805()72()	
DSC162()80	TA12C60W()80()		10805()80()	
DSC162()88	TA12C60W()88()		10805()88()	
DSC162()96	TA12C60W()96()		10805()96()	

SEE ENGINEERING STANDARDS APPROVAL RECORD FOR ORIGINAL SIGNATURES AND CHANGE SUMMARY

DRAWN	B. McDONALD	TITLE: CLAMP, 'U' TYPE, CUSHION, WEDGE, WITH BASE BAR	DSC 162 PAGE 4 OF 5
CHECKED	P. LAM		
STRESS	N/A		
APPROVED	S. HAMI		

Ⓐ STAR PART NUMBERS ADDED

APPROVED: 10 SEP 97 REV: A - 14 JUL 00

THE INFORMATION, TECHNICAL DATA AND DESIGNS DISCLOSED IN THIS DOCUMENT (THE "INFORMATION") ARE EITHER THE EXCLUSIVE PROPERTY OF DE HAVILLAND INC., OR ARE SUBJECT TO PROPRIETARY RIGHTS OF OTHERS. THE INFORMATION IS NOT TO BE USED FOR DESIGN OR MANUFACTURE, OR DISCLOSED TO OTHERS WITHOUT THE EXPRESS PRIOR WRITTEN CONSENT OF DE HAVILLAND INC. THE HOLDER OF THIS DOCUMENT, BY ITS RETENTION AND USE, AGREES TO HOLD THE INFORMATION IN CONFIDENCE. THESE RESTRICTIONS DO NOT APPLY TO PERSONS HAVING PROPRIETARY RIGHTS IN THE INFORMATION, TO THE EXTENT OF THOSE RIGHTS.

de HAVILLAND

CAGE CODE 71867

SOURCE CONTROL DRAWING

ONLY THE ITEM(S) LISTED ON THIS DRAWING AND IDENTIFIED BY VENDOR'S NAME(S), ADDRESS(ES) AND PART NUMBER(S) HAVE BEEN APPROVED BY DE HAVILLAND INC. FOR USE IN DHI AIRCRAFT. A SUBSTITUTE ITEM SHALL NOT BE USED WITHOUT PRIOR APPROVAL BY DE HAVILLAND INC.

SOURCE CONTROL DRAWING

APPROVED VENDORS ADDRESSES AND CAGE CODES

ADEL FASTENERS - DIVISION OF TRANSDIGM INC

LOS ANGELES, CA, USA - CAGE CODE 83930

J and M PRODUCTS INC

BURBANK, CA, USA - CAGE CODE 22175

STAR TECHNOLOGIES INC

HUNTINGTON, WV, USA - CAGE CODE 02WC8

TA MFG CORP

GLENDALE, CA, USA - CAGE CODE 4L996

SEE ENGINEERING STANDARDS APPROVAL RECORD FOR ORIGINAL SIGNATURES AND CHANGE SUMMARY

DRAWN		TITLE: CLAMP, 'U' TYPE, CUSHION, WEDGE, WITH BASE BAR	DSC 162 PAGE 5 OF 5
CHECKED			
STRESS			
APPROVED			

APPROVED: 14 JUL 2000