

THE INFORMATION, TECHNICAL DATA AND DESIGNS DISCLOSED IN THIS DOCUMENT (THE "INFORMATION") ARE EITHER THE EXCLUSIVE PROPERTY OF BOMBARDIER INC., OR ARE SUBJECT TO PROPRIETARY RIGHTS OF OTHERS. THE INFORMATION IS NOT TO BE USED FOR DESIGN OR MANUFACTURE, OR DISCLOSED TO OTHERS WITHOUT THE EXPRESS PRIOR WRITTEN CONSENT OF BOMBARDIER INC. THE HOLDER OF THIS DOCUMENT, BY ITS RETENTION AND USE, AGREES TO HOLD THE INFORMATION IN CONFIDENCE. THESE RESTRICTIONS DO NOT APPLY TO PERSONS HAVING PROPRIETARY RIGHTS IN THE INFORMATION, TO THE EXTENT OF THOSE RIGHTS.

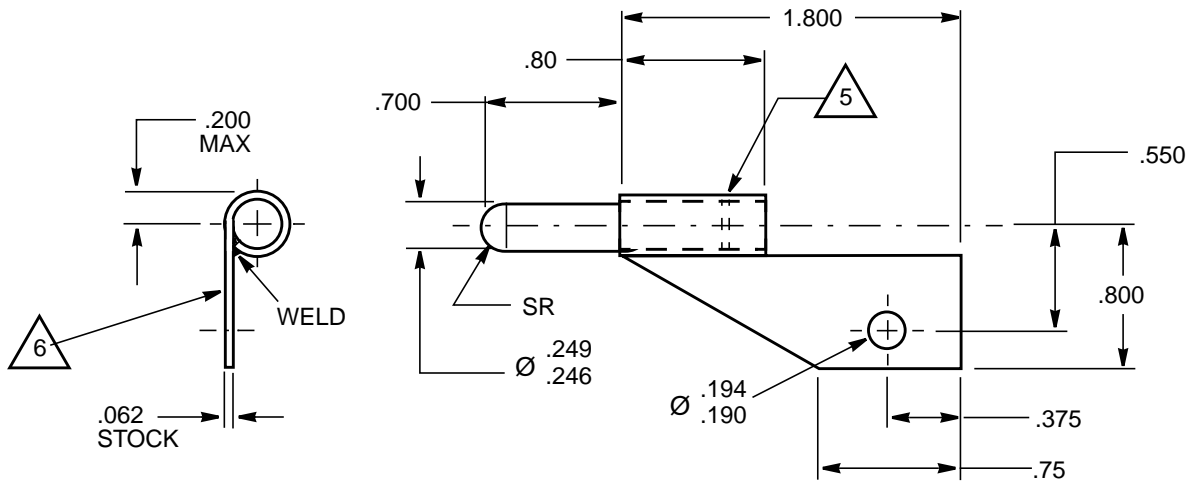
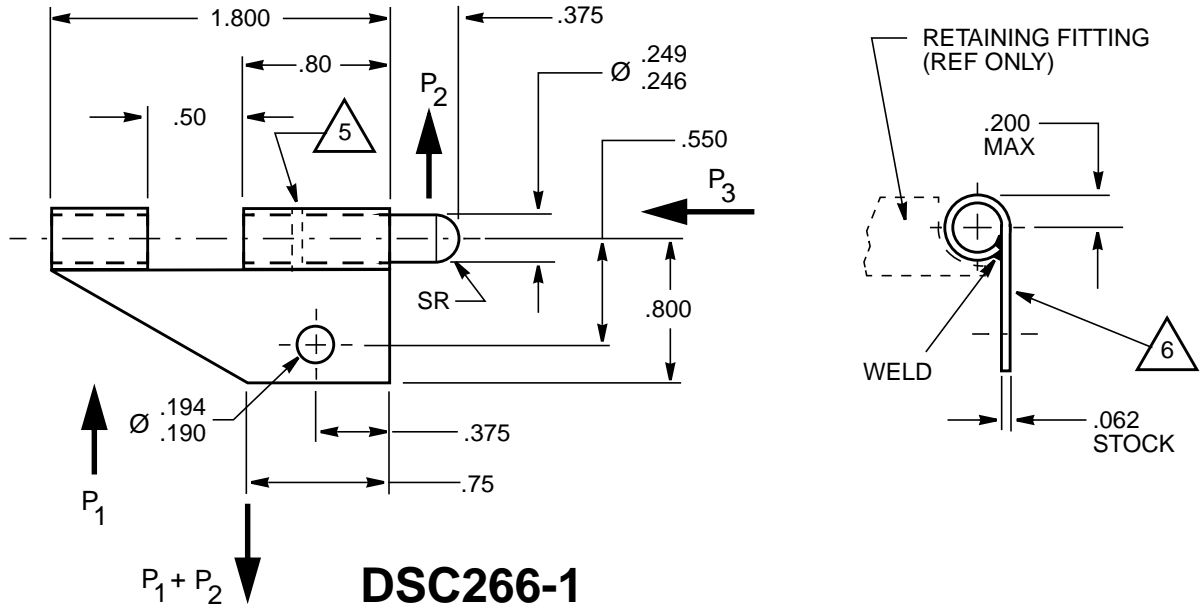
de HAVILLAND

CAGE CODE 71867

SOURCE CONTROL DRAWING

ONLY THE ITEM(S) LISTED ON THIS DRAWING AND IDENTIFIED BY VENDOR'S NAME(S), ADDRESS(ES) AND PART NUMBER(S) HAVE BEEN APPROVED BY BOMBARDIER INC. FOR USE IN DE HAVILLAND AIRCRAFT. A SUBSTITUTE ITEM SHALL NOT BE USED WITHOUT PRIOR APPROVAL BY BOMBARDIER INC.

SOURCE CONTROL DRAWING



LIST OF CURRENT SHEETS

SHEET	1	2								
REV	C	-								

SEE ENGINEERING STANDARDS APPROVAL RECORD FOR ORIGINAL SIGNATURES AND CHANGE SUMMARY

DRAWN	B. EDWARDS
CHECKED	R. KROMKAMP
STRESS	F. LAU
APPROVED	S. SCHRATTNER

TITLE:	HALF HINGE ASSEMBLY
--------	----------------------------

DSC 266
PAGE 1 OF 2

© REDRAWN AS 'A' SIZE SHEET
DSC 266-2 ADDED

REV: REV: REV: REV: C - 27 MAR 98 REV: B - N/A REV: A - 10 FEB 84 APPROVED: 25 MAY 1983

THE INFORMATION, TECHNICAL DATA AND DESIGNS DISCLOSED IN THIS DOCUMENT (THE "INFORMATION") ARE EITHER THE EXCLUSIVE PROPERTY OF DE HAVILLAND INC., OR ARE SUBJECT TO PROPRIETARY RIGHTS OF OTHERS. THE INFORMATION IS NOT TO BE USED FOR DESIGN OR MANUFACTURE, OR DISCLOSED TO OTHERS WITHOUT THE EXPRESS PRIOR WRITTEN CONSENT OF DE HAVILLAND INC. THE HOLDER OF THIS DOCUMENT, BY ITS RETENTION AND USE, AGREES TO HOLD THE INFORMATION IN CONFIDENCE. THESE RESTRICTIONS DO NOT APPLY TO PERSONS HAVING PROPRIETARY RIGHTS IN THE INFORMATION, TO THE EXTENT OF THOSE RIGHTS.

de HAVILLAND

CAGE CODE 71867

SOURCE CONTROL DRAWING

ONLY THE ITEM(S) LISTED ON THIS DRAWING AND IDENTIFIED BY VENDOR'S NAME(S), ADDRESS(ES) AND PART NUMBER(S) HAVE BEEN APPROVED BY DE HAVILLAND INC. FOR USE IN DHI AIRCRAFT. A SUBSTITUTE ITEM SHALL NOT BE USED WITHOUT PRIOR APPROVAL BY DE HAVILLAND INC.

SOURCE CONTROL DRAWING

NOTES:

1. LOADS P1 + P2 - 200 LBS ULT
P3 - 120 LBS ULT } SEPARATELY OR SIMULTANEOUSLY
2. HINGE ALLOWS DOOR TO SWIVEL FOR REMOVAL
3. ALL EDGES AND CORNERS TO BE SMOOTH
4. MATERIAL: 304 CRES
5. HOUSING STAKED FOR PIN RETENTION - APPROX LOCATION AS SHOWN (FAR SIDE)
6. DSC PART No.
7. SPARES PROVISIONING - THIS IS A NON-REPAIRABLE ITEM
8. THE VENDOR SHALL NOTIFY DEHAVILLAND IN ADVANCE OF ANY INTENDED
9. PROCUREMENT SHALL SPECIFY THE MANUFACTURER'S PART No. AND THE DSC PART No. ON THE PURCHASE ORDER

APPROVED VENDORS:

DSC	HARTWELL CORP		
266-1	H1591-1		
266-2	H1634-1		

VENDORS ADDRESSES/CAGE CODES:

HARTWELL CORP: PLACENTIA, CA, 92670 - CAGE CODE 83014

SEE ENGINEERING STANDARDS APPROVAL RECORD FOR ORIGINAL SIGNATURES AND CHANGE SUMMARY

DRAWN	B. McDONALD	TITLE: HALF HINGE ASSEMBLY	DSC 266
CHECKED	J. ROTSCH		
STRESS	N/A		PAGE 2 OF 2
APPROVED	S. HAMID		

REV:

REV:

REV:

REV:

REV:

REV:

APPROVED: 27 MAR 98