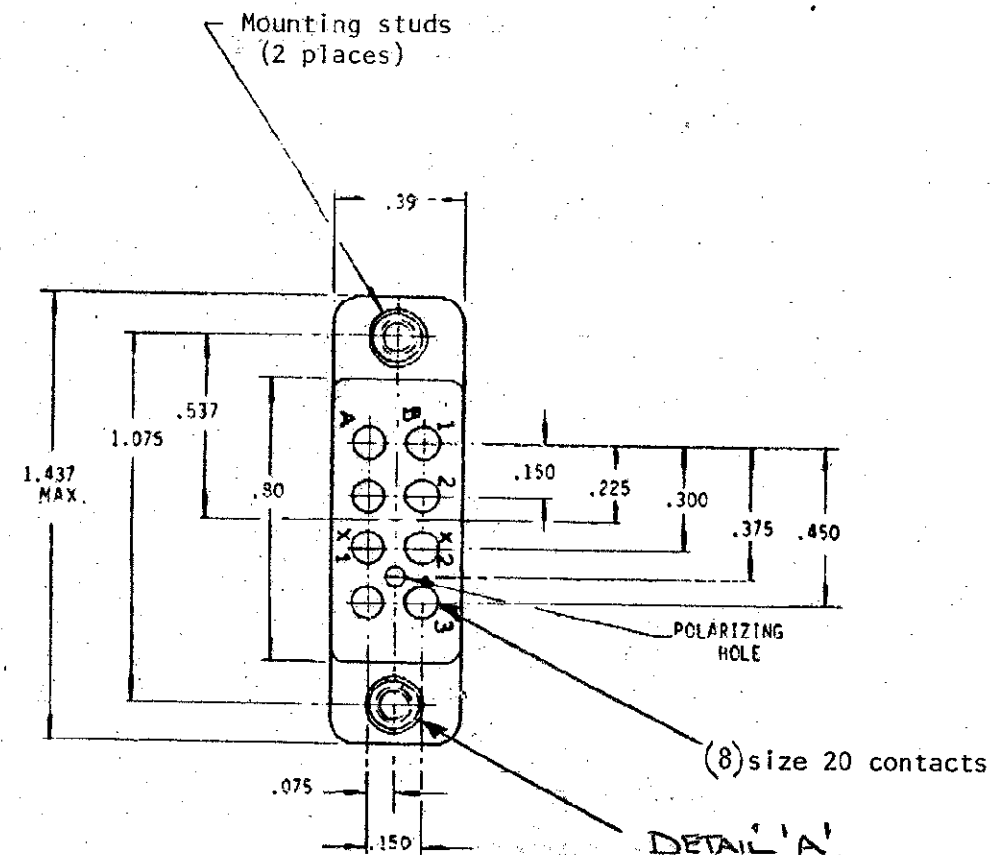


This drawing is private and confidential and is supplied on the express condition that it is not to be used for any purpose or copied or communicated to any other person without the prior permission of the de Havilland Aircraft Company of Canada, Downsview, Ontario.

REVISIONS					
CHANGE	ITEM NO.	DESCRIPTION	DATE	DRAWN	CHECKED
A		Note 12 - added	15.5.87	RE	PL
B		3-5 in/lbs WAS 3-4 in/lbs DRAWING INSTRUCTIONS ADDED	22.10.87	RK	DI
					STRESS
					APPROVED



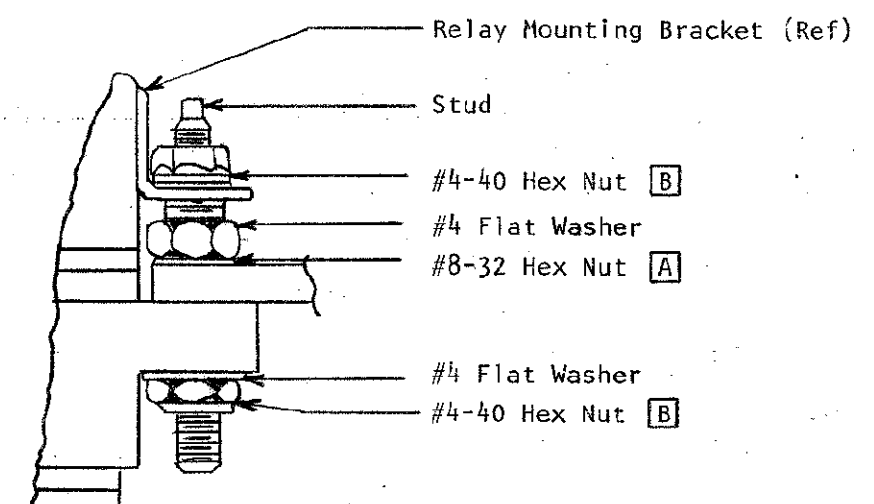
REQUIREMENTS:

- 1) Operating temperature: -65°C to $+125^{\circ}\text{C}$ per MIL-STD-202, Method 107, Condition B.
- 2) Dielectric Strength: per MIL-STD-202, Method 301.
- 3) Vibration: per MIL-STD-202, Method 204, Condition B.
- 4) Moisture Resistance: per MIL-STD-202, Method 206.
- 5) Shock: per MIL-STD-202, Method 202, Condition A.
- 6) Salt Spray: per MIL-STD-202, Method 1010, Condition B.
- 7) Weight: .03 lbs. max. including mounting hardware, but less contacts.
- 8) This connector shall meet the design and functional requirements of MIL-C-26500 and MIL-C-26482.
- 9) Socket contacts shall be of the closed entry type and shall comply with the test requirements of MIL-C-23216 including crimp termination.
- 10) The Procurement Dept. shall specify the DSC no. and the Manufacturer's part number on the Purchase Order.
- 11) Quality Control/Inspection procedures shall comply with the requirements of AQAP-4 or MIL-I-45208A which is the U.S. equivalent.

Part No.	Approved Vendors		
	Leach	PCD	Clover
DSC406-1	SO-1064-001	RSE120051	CL3-2151-201

- 12) The DSC Part No. shall be marked on each individual relay package.

DETAIL 'A'



- Panel Thickness .093 Max
- Nuts to be self locking

DRAWING INSTRUCTIONS

- [A] Tighten to 10-12 in/lbs Torque.
- [B] Tighten to 3-5 in/lbs Torque. MAX

SOURCE CONTROL DRAWING

Only the item(s) listed on this drawing and identified by vendor's name(s), address(es) and part number(s) have been approved by the de Havilland Aircraft Company of Canada for use in DHC aircraft. A substitute item shall not be used without prior approval by the de Havilland Aircraft Company of Canada.

deHAVILLAND
A BOEING COMPANY
CANADA

DRAWN	EDWARDS	3 APR 87
CHECKED	Hankamp	7.4.87
APPROVED	K.D.	28.4.87
MTL & STDS	SCOTT	28.4.87
STRESS	W. H. H.	28.4.87
CH. DRAFTN.		

DRAWING TITLE			
SOCKET-RELAY 2 Pole, 5 Amp			
DWG SIZE	CODE IDENT NO.	DRAWING NO.	RELEASE
B	71867	DSC 406	B
SCALE	WGT CALC	ACTUAL	SHEET

REPORT ALL DRAWING ERRORS
TO ENGINEERING