

THE INFORMATION, TECHNICAL DATA AND DESIGNS DISCLOSED IN THIS DOCUMENT (THE "INFORMATION") ARE EITHER THE EXCLUSIVE PROPERTY OF BOMBARDIER INC., OR ARE SUBJECT TO PROPRIETARY RIGHTS OF OTHERS. THE INFORMATION IS NOT TO BE USED FOR DESIGN OR MANUFACTURE, OR DISCLOSED TO OTHERS WITHOUT THE EXPRESS PRIOR WRITTEN CONSENT OF BOMBARDIER INC. THE HOLDER OF THIS DOCUMENT, BY ITS RETENTION AND USE, AGREES TO HOLD THE INFORMATION IN CONFIDENCE. THESE RESTRICTIONS DO NOT APPLY TO PERSONS HAVING PROPRIETARY RIGHTS IN THE INFORMATION, TO THE EXTENT OF THOSE RIGHTS.

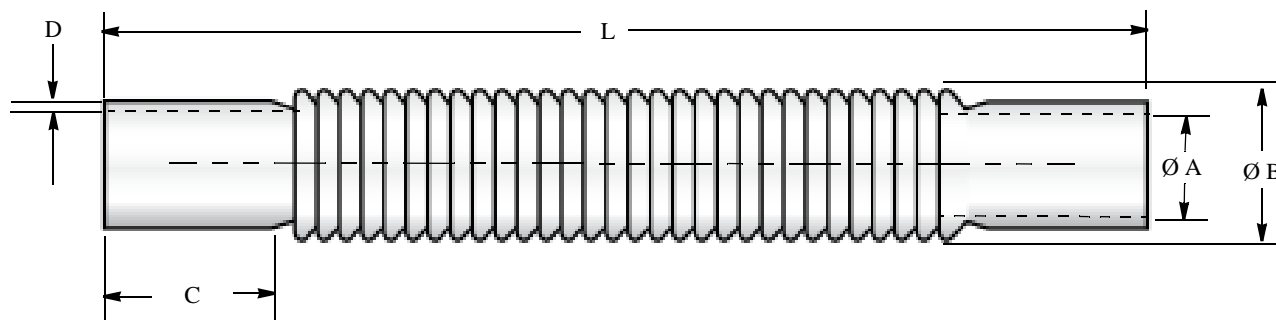
de HAVILLAND

CAGE CODE 71867

SOURCE CONTROL DRAWING

ONLY THE ITEM(S) LISTED ON THIS DRAWING AND IDENTIFIED BY VENDOR'S NAME(S), ADDRESS(ES) AND PART NUMBER(S) HAVE BEEN APPROVED FOR USE IN DE HAVILLAND AIRCRAFT. A SUBSTITUTE ITEM SHALL NOT BE USED WITHOUT PRIOR APPROVAL BY DE HAVILLAND ENGINEERING STANDARDS

SOURCE CONTROL DRAWING



| PART NO. | Ø A | Ø B (ref) | C (nom) | D | WEIGHT LB/IN (max) | MIN C.P.I. (note 3) | MIN BEND RAD (note 2) | APPROVED VENDORS | |
|-----------|-------|--------------|------------|------|--------------------------|---------------------------|--------------------------------|--------------------|---------|
| | | | | | | | | NEWAGE (note 7) | |
| DSC410-4 | .250 | .375 | .750 | .015 | .0012 | 9 | .125 | CORR250 | 3400075 |
| DSC410-6 | .375 | .562 | 1.000 | .020 | .0018 | 7 | .187 | CORR375 | 3400152 |
| DSC410-8 | .500 | .750 | 1.000 | .025 | .0041 | 6 | .250 | CORR500 | 3400229 |
| DSC410-10 | .625 | .937 | 1.000 | .025 | .0050 | 5 | .312 | CORR625 | 3400306 |
| DSC410-12 | .750 | 1.062 | 1.500 | .030 | .0074 | 5 | .375 | CORR750 | 3400383 |
| DSC410-14 | .875 | 1.250 | 1.500 | .030 | .0100 | 4 | .437 | CORR875 | 3400460 |
| DSC410-16 | 1.000 | 1.437 | 2.000 | .035 | .0114 | 4 | .500 | CORR1000 | 3400537 |
| DSC410-20 | 1.250 | 1.625 | 2.000 | .035 | .0162 | 3 | .625 | CORR1250 | 3400614 |
| DSC410-24 | 1.500 | 1.812 | 2.000 | .035 | .0219 | 3 | .750 | CORR1500 | 3400691 |
| DSC410-32 | 2.000 | 2.625 | 2.000 | .040 | .0249 | 3 | 1.000 | CORR2000 | 3400768 |

LIST OF CURRENT SHEETS

| SHEET | 1 | 2 | | | | | | | | |
|-------|---|---|--|--|--|--|--|--|--|--|
| REV | B | B | | | | | | | | |

SEE ENGINEERING STANDARDS APPROVAL RECORD FOR ORIGINAL SIGNATURES AND CHANGE SUMMARY

| | | | |
|----------|--------------|-----------------------------------------------------------------------------------|----------------|
| DRAWN | R. GILCHRIST | TITLE: HOSE - CORRUGATED, FEP TEFLON, FLEXIBLE CLEAR | DSC 410 |
| CHECKED | B. EDWARDS | | |
| STRESS | M. ELLIOTT | | PAGE 1 OF 2 |
| APPROVED | SCHRATTNER | | |

REV:

REV:

REV:

REV:

REV: B - 1 JUN 2015

REV: A - 11 FEB 2003

APPROVED: 24 NOV 1988

SOURCE CONTROL DRAWING

NOTES:

1. **Material:** FEP (Fluorinated Ethylene Propylene Copolymer)
Must meet the flammability requirements of FAR. 25-853(b-3) Amd 25-51.
2. **Performance:**
 - **Temperature Range** -65°F to +250°F
 - **Minimum Bend Rad** Inside bend rad wherein maximum decrease in cross-sectional area shall not exceed 10%.
 - **Must be capable of fitting over rigid tube beaded per MS33660.**
3. **C.P.I. = Convolutions or corrugations per inch.** Dimensions in inches unless otherwise specified.
4. **Procurement Department shall specify the DSC number and vendor part number on the purchase order.**
5. **Ordering code (example):** DSC410 - 6 - 1106

Length in inches (110.75), last digit represents fractions of an inch in 1/8's

Inside cuff diameter in increments of 1/16" (.375 inches)

Basic part number
6. **Supplier shall notify Bombardier Aerospace in writing prior to any material specification change.**
7. **NewAge Industries, Inc. 145 James Way, Southhampton, PA 18966**

SEE ENGINEERING STANDARDS APPROVAL RECORD FOR ORIGINAL SIGNATURES AND CHANGE SUMMARY

| | | | |
|----------|--------------|-----------------------------------------------------------------------------------|----------------|
| DRAWN | R. GILCHRIST | TITLE: HOSE - CORRUGATED, FEP TEFLON, FLEXIBLE CLEAR | DSC 410 |
| CHECKED | B. EDWARDS | | |
| STRESS | M. ELLIOTT | | |
| APPROVED | SCHRATTNER | | PAGE 2 OF 2 |