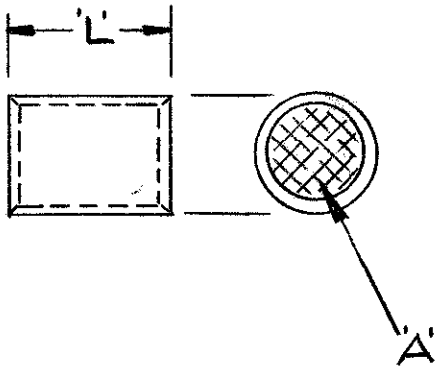


This drawing is private and confidential and is supplied on the express condition that it is not to be used for any purpose or copied or communicated to any other person without the permission of THE DE HAVILLAND AIRCRAFT OF CANADA LIMITED

REPORT ALL DRAWING ERRORS TO ENGINEERING

REVISIONS					
CHANGE	ITEM NO.	DESCRIPTION	DATE	DRAWN	CHECKED
A		ETC INC. PART NUMBERS ADDED FOR PART -1 & PART -4	APRIL 21/66	L ANKENMAN	W
					STRESS
					APPROVD.

DSC 51 DASH NO.	DIM 'L'	CMA 'A'	APPROVED VENDOR PART NO.	
			1	2
-1	5 ± 1 16 -64	509-3260	AS-302	34130
-2	5 ± 1 16 -64	2050-5180	BS-304	34137
-3	5 ± 1 16 -64	5180-13100	CS-303	34138
-4	3 ± 1 8 -64	13100-20800	D-355	34318



2 AIRCRAFT-MARINE PROD. OF CAN. LTD.
TORONTO, CANADA

1 ETC INC., CLEVELAND, OHIO

VENDOR'S ADDRESSES:-

09482

73722

FED. SUPPLY
CODE

MOD NO.	EO 7246	THE DE HAVILLAND AIRCRAFT OF CANADA LIMITED DOWNSVIEW ONTARIO			
DRAWN	W. HEAD	DRAWING TITLE PARALLEL CONNECTOR NON INSULATED			
CHECKED	W. HEAD				
APPROVED	B.C. BEASLEY				
STRESS	W. HEAD				
		CODE IDENT NO.	DWG SIZE	DRAWING NO.	RELEASE
		71867	B	DSC 51	REV.
		SCALE	WGT. CALC	ACTUAL	SHEET

SOURCE CONTROL DRAWING

ONLY THE ITEM(S) LISTED ON THIS DRAWING AND IDENTIFIED BY VENDOR'S NAME(S), ADDRESS(ES) AND PART NUMBER(S) HAVE BEEN APPROVED BY THE DE HAVILLAND AIRCRAFT OF CANADA LIMITED FOR THE USE IN DHC AIRCRAFT. A SUBSTITUTE ITEM SHALL NOT BE USED WITHOUT PRIOR APPROVAL BY THE DE HAVILLAND AIRCRAFT OF CANADA LTD.