

APPROVED: 01 DEC 2002

THE INFORMATION, TECHNICAL DATA AND DESIGNS DISCLOSED IN THIS DOCUMENT (THE "INFORMATION") ARE EITHER THE EXCLUSIVE PROPERTY OF BOMBARDIER INC., OR ARE SUBJECT TO PROPRIETARY RIGHTS OF OTHERS. THE INFORMATION IS NOT TO BE USED FOR DESIGN OR MANUFACTURE, OR DISCLOSED TO OTHERS WITHOUT THE EXPRESS PRIOR WRITTEN CONSENT OF BOMBARDIER INC. THE HOLDER OF THIS DOCUMENT, BY ITS RETENTION AND USE, AGREES TO HOLD THE INFORMATION IN CONFIDENCE. THESE RESTRICTIONS DO NOT APPLY TO PERSONS HAVING PROPRIETARY RIGHTS IN THE INFORMATION, TO THE EXTENT OF THOSE RIGHTS.

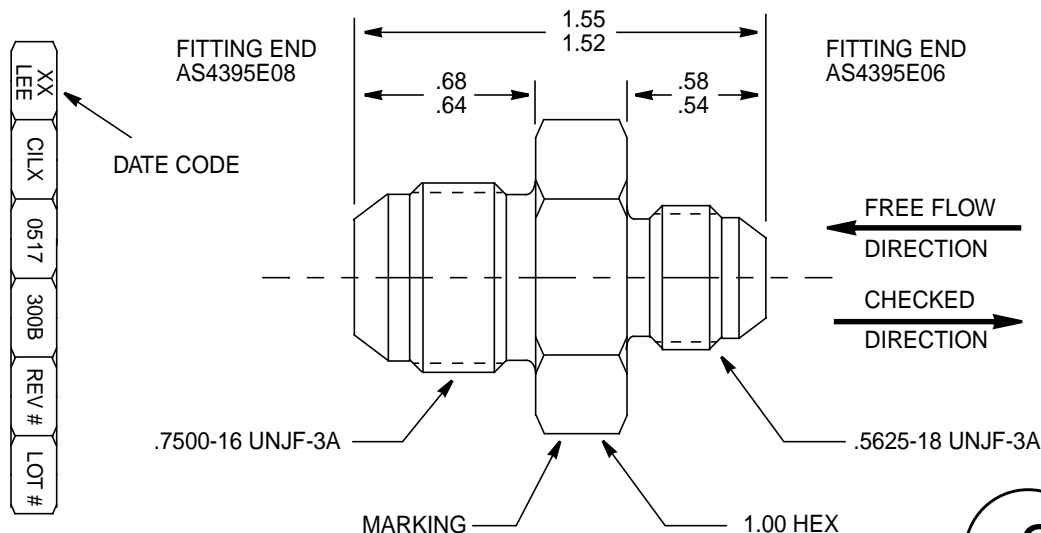
de HAVILLAND

CAGE CODE 71867

SOURCE CONTROL DRAWING

ONLY THE ITEM(S) LISTED ON THIS DRAWING AND IDENTIFIED BY VENDOR'S NAME(S), ADDRESS(ES) AND PART NUMBER(S) HAVE BEEN APPROVED FOR USE IN DE HAVILLAND AIRCRAFT. A SUBSTITUTE ITEM SHALL NOT BE USED WITHOUT PRIOR APPROVAL BY DE HAVILLAND ENGINEERING STANDARDS

SOURCE CONTROL DRAWING



MATERIAL: **FITTING & SEAT:** 304 CRES PER QQ-S-763
SPRING: 17-7PH CRES PER AMS5678
POPPET: 15-5PH CRES PER AMS5659

FINISH: PASSIVATE PER ASTM A967

- NOTES:**
1. VALVE PERFORMANCE ON SKYDROL 500B-4 AT 100° F ± 10° F:
 - A) CRACKING PRESSURE: 2 - 8 PSID
 - B) FREE FLOW: 4 GPM MINIMUM AT 75 PSID (40 LOHMS)
 - C) MAXIMUM LEAKAGE IN CHECKED DIRECTION: 1 DROP/MINUTE AT 5 PSID
1 DROP/HOUR AT 1000-3000 PSID
 2. MAXIMUM WORKING PRESSURE DIFFERENTIAL: 3000 PSI
 3. FITTING PROOF PRESSURE: 6000 PSI

APPROVED VENDOR:

	VENDOR PART No.	VENDOR	CAGE CODE
DSC566-2	CILX0517300B	THE LEE COMPANY	92555

SEE ENGINEERING STANDARDS APPROVAL RECORD FOR ORIGINAL SIGNATURES AND CHANGE SUMMARY

DRAWN	P. LAM	TITLE: UNION, CHECK, FLARED TUBE	DSC 566
CHECKED	A. WALLER		
STRESS	E. GIOVANNETTI		PAGE 2 OF 2
APPROVED	B. EDWARDS		

REV:

REV:

REV:

REV:

REV:

REV:

APPROVED: 01 DEC 2002