

THE INFORMATION, TECHNICAL DATA AND DESIGNS DISCLOSED IN THIS DOCUMENT (THE "INFORMATION") ARE EITHER THE EXCLUSIVE PROPERTY OF DE HAVILLAND INC., OR ARE SUBJECT TO PROPRIETARY RIGHTS OF OTHERS. THE INFORMATION IS NOT TO BE USED FOR DESIGN OR MANUFACTURE, OR DISCLOSED TO OTHERS WITHOUT THE EXPRESS PRIOR WRITTEN CONSENT OF DE HAVILLAND INC. THE HOLDER OF THIS DOCUMENT, BY ITS RETENTION AND USE, AGREES TO HOLD THE INFORMATION IN CONFIDENCE. THESE RESTRICTIONS DO NOT APPLY TO PERSONS HAVING PROPRIETARY RIGHTS IN THE INFORMATION, TO THE EXTENT OF THOSE RIGHTS.

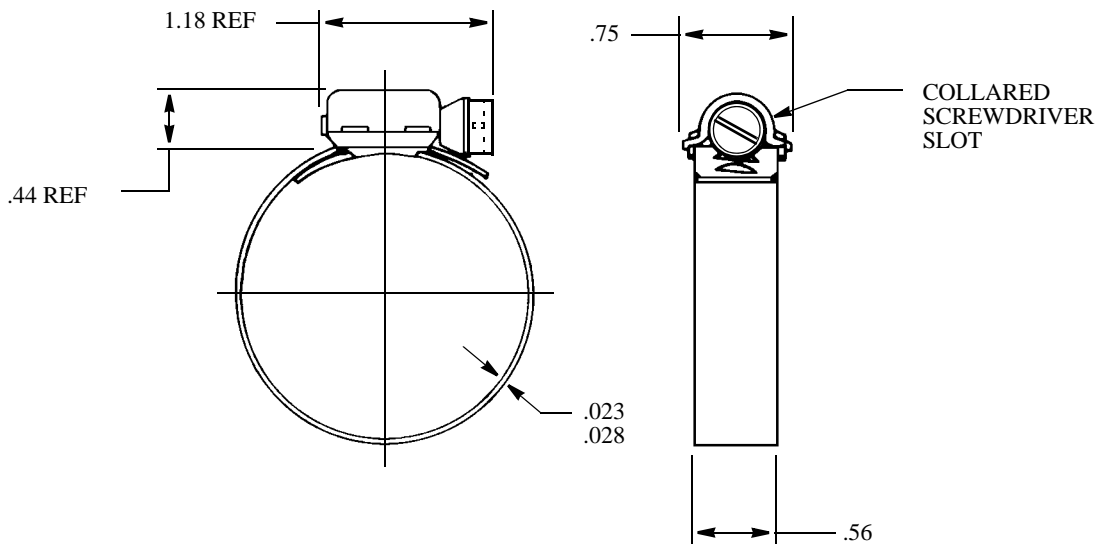
de HAVILLAND

CAGE CODE 71867

SOURCE CONTROL DRAWING

ONLY THE ITEM(S) LISTED ON THIS DRAWING AND IDENTIFIED BY VENDOR'S NAME(S), ADDRESS(ES) AND PART NUMBER(S) HAVE BEEN APPROVED BY DE HAVILLAND INC. FOR USE IN DHI AIRCRAFT. A SUBSTITUTE ITEM SHALL NOT BE USED WITHOUT PRIOR APPROVAL BY DE HAVILLAND INC.

SOURCE CONTROL DRAWING



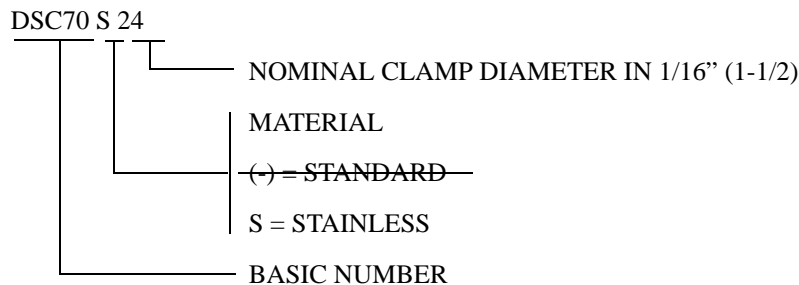
NOTES:

1. ALL DIMENSIONS IN INCHES.
2. TOLERANCES UNLESS OTHERWISE NOTED $\pm .030$

MATERIAL:

- (M) ~~STANDARD BAND, SADDLE, HOUSING - STAINLESS STEEL~~
~~- SCREW - ZINC PLATED CARBON STEEL -~~
 (NOTE - STANDARD CLAMP INACTIVE FOR NEW DESIGN)
 STAINLESS - BAND, SADDLE, HOUSING - STAINLESS STEEL
 - SCREW - STAINLESS STEEL

EXAMPLE OF PART NUMBER BREAKDOWN



LIST OF CURRENT SHEETS

| PAGE | 1 | 2 | 3 | | | | | | | | |
|----------|---|---|---|--|--|--|--|--|--|--|--|
| REVISION | N | A | B | | | | | | | | |

FOR ORIGINAL SIGNATURES SEE THE ENGINEERING STANDARDS APPROVAL RECORD

| | | | |
|----------|------------|--|---|
| DRAWN | TUNNEY | TITLE: CLAMP, HOSE, COLLARED SCREWDRIVER SLOT | DSC 70 PAGE 1 OF 3 Revision: N |
| CHECKED | SCHRATTNER | | |
| STRESS | RADZIN | | |
| APPROVED | BINNINGTON | | |

(N) SHEETS 1 AND 3 REVISED AT ISSUE "N" and "B" RESPECTIVELY

SOURCE CONTROL DRAWING

Table 1: STANDARD CLAMP ASSEMBLY

A

| DSC PART NO. NOTE | CLAMP DIA | | APPROVED VENDORS PART NUMBERS | | |
|-------------------------|-----------|--------|-------------------------------|---------------------|---------------------|
| | MIN | MAX | AERO-SEAL BREEZE | WITTEK SURE-TITE | AERO-SEAL BREEZE |
| DSC70-6 | 7/16 | 25/32 | 10006S | C-6P | QS100M-6S |
| DSC70-10 | 9/16 | 1-1/16 | 10010S | C-10P | QS100M-10S |
| DSC70-12 | 11/16 | 1-1/4 | 10012S | C-12P | QS100M-12S |
| DSC70-16 | 13/16 | 1-1/2 | 10016S | C-16P | QS100M-16S |
| DSC70-20 | 13/16 | 1-3/4 | 10020S | C-20P | QS100M-20S |
| DSC70-24 | 1-1/16 | 2 | 10024S | C-24P | QS100M-24S |
| DSC70-32 | 1-9/16 | 2-1/2 | 10032S | C-32P | QS100M-32S |
| DSC70-36 | 1-13/16 | 2-3/4 | 10036S | C-36P | QS100M-36S |
| DSC70-40 | 2-1/16 | 3 | 10040S | C-40P | QS100M-40S |
| DSC70-48 | 2-9/16 | 3-1/2 | 10048S | C-48P | QS100M-48S |
| DSC70-56 | 3-1/16 | 4 | 10056S | C-56P | QS100M-56S |
| DSC70-64 | 3-9/16 | 4-1/2 | 10064S | C-64P | QS100M-64S |
| DSC70-72 | 1-7/8 | 5 | 10072S | C-72P | QS100M-72S |
| DSC70-80 | 2-1/2 | 5-1/2 | 10080S | C-80P | QS100M-80S |
| DSC70-96 | 3-5/8 | 6-1/2 | 10096S | C-96P | QS100M-96S |
| DSC70-104 | 4-1/8 | 7 | 100104S | C-104P | QS100M-104S |
| DSC70-116 | 4-7/8 | 7-3/4 | 100116S | C-116P | QS100M-116S |
| DSC70-128 | 5-5/8 | 8-1/2 | 100128S | C-128P | QS100M-128S |

A

NOTE - STANDARD CLAMP Inactive for NEW design as of 28 April, 1997, use **STAINLESS STEEL** clamp as per Table 2.

A STANDARD CLAMP INACTIVE FOR NEW DESIGN
28 APR 97 - B. McDONALD

FOR ORIGINAL SIGNATURES SEE THE ENGINEERING STANDARDS APPROVAL RECORD

| | | | |
|----------|------------|--|---|
| DRAWN | TUNNEY | TITLE: CLAMP, HOSE, COLLARED SCREWDRIVER SLOT | DSC 70 PAGE 2 OF 3 Revision: A |
| CHECKED | SCHRATTNER | | |
| STRESS | RADZIN | | |
| APPROVED | BINNINGTON | | |

SOURCE CONTROL DRAWING

(A) Table 2: STAINLESS STEEL CLAMP

| DSC PART NO. | CLAMP DIA | | APPROVED VENDORS PART NUMBERS | | |
|-----------------|-----------|--------|-------------------------------|---------------------|---------------------|
| | MIN | MAX | AERO-SEAL BREEZE | WITTEK SURE-TITE | AERO-SEAL BREEZE |
| | | | | | |
| DSC70S6 | 7/16 | 25/32 | 20006S | C-6PS | QS200M-6S |
| (B) DSC70S8 | 1/2 | 29/32 | 20008S | C-8PS | QS200M-8S |
| DSC70S10 | 9/16 | 1-1/16 | 20010S | C-10PS | QS200M-10S |
| DSC70S12 | 11/16 | 1-1/4 | 20012S | C-12PS | QS200M-12S |
| DSC70S16 | 13/16 | 1-1/2 | 20016S | C-16PS | QS200M-16S |
| DSC70S20 | 13/16 | 1-3/4 | 20020S | C-20PS | QS200M-20S |
| DSC70S24 | 1-1/16 | 2 | 20024S | C-24PS | QS200M-24S |
| DSC70S32 | 1-9/16 | 2-1/2 | 20032S | C-32PS | QS200M-32S |
| DSC70S36 | 1-13/16 | 2-3/4 | 20036S | C-36PS | QS200M-36S |
| DSC70S40 | 2-1/16 | 3 | 20040S | C-40PS | QS200M-40S |
| DSC70S48 | 2-9/16 | 3-1/2 | 20048S | C-48PS | QS200M-48S |
| DSC70S56 | 3-1/16 | 4 | 20056S | C-56PS | QS200M-56S |
| DSC70S64 | 3-9/16 | 4-1/2 | 20064S | C-64PS | QS200M-64S |
| DSC70S72 | 1-7/8 | 5 | 20072S | C-72PS | QS200M-72S |
| DSC70S80 | 2-1/2 | 5-1/2 | 20080S | C-80PS | QS200M-80S |
| DSC70S96 | 3-5/8 | 6-1/2 | 20096S | C-96PS | QS200M-96S |
| DSC70S104 | 4-1/8 | 7 | 200104S | C-104PS | QS200M-104S |
| DSC70S116 | 4-7/8 | 7-3/4 | 200116S | C-116PS | QS200M-116S |
| DSC70S128 | 5-5/8 | 8-1/2 | 200128S | C-128PS | QS200M-128S |

PROCUREMENT INFORMATION

PROCUREMENT DEPARTMENT SHALL SPECIFY THE DSC NUMBER AND THE MANUFACTURERS NUMBER ON THE PURCHASE ORDER

FOR ORIGINAL SIGNATURES SEE THE ENGINEERING STANDARDS APPROVAL RECORD

| | | | |
|----------|------------|--|---|
| DRAWN | TUNNEY | TITLE: CLAMP, HOSE, COLLARED SCREWDRIVER SLOT | DSC 70 PAGE 3 OF 3 Revision: B |
| CHECKED | SCHRATTNER | | |
| STRESS | RADZIN | | |
| APPROVED | BINNINGTON | | |

(B) ADDED: DSC70S8"
17 JUNE 2015